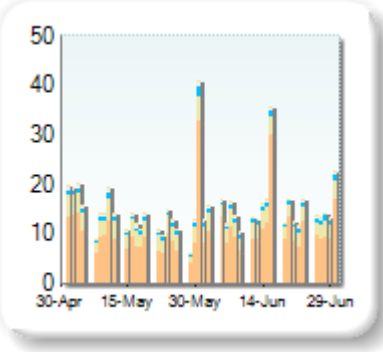


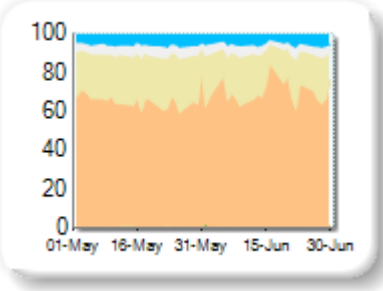
Market Share

| Rank | Venue | Market Share | Change |
|------|-------|--------------|--------|
| 1 | XMAD | 70.38% | +3.51 |
| 2 | CEUX | 19.37% | -2.92 |
| 3 | AQEU | 5.24% | -0.11 |
| 4 | TQEX | 4.37% | -0.45 |
| 5 | BATE | 0.55% | +0.11 |
| 6 | CHIX | 0.06% | -0.07 |
| 7 | TRQX | 0.04% | -0.05 |
| 8 | AQXE | 0.00% | 0.00 |

Volume Trend



Market Share Trend



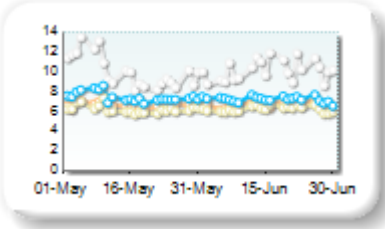
Market share is based on on-book value traded during continuous trading. The share is calculated by averaging over all stocks in the index. The current value shown is for last week and the change is relative to the previous week.

Spreads

At touch

| Rank | Venue | Spread (bps) | Change |
|------|-------|--------------|--------|
| 1 | CEUX | 6.23 | +0.02 |
| 2 | XMAD | 6.61 | -0.03 |
| 3 | AQEU | 7.22 | -0.23 |
| 4 | TQEX | 10.18 | +0.12 |
| 5 | BATE | 242.29 | -17.57 |
| 6 | CHIX | 361.72 | +0.99 |

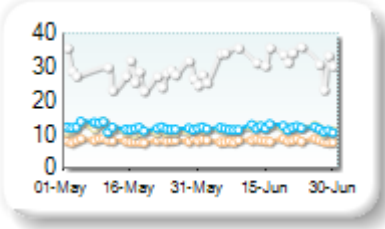
Monthly Spread Trend



25k EUR deal

| Rank | Venue | Spread (bps) | Change |
|------|-------|--------------|--------|
| 1 | XMAD | 8.16 | -0.03 |
| 2 | CEUX | 11.62 | +0.32 |
| 3 | AQEU | 11.81 | -0.20 |
| 4 | TQEX | 34.46 | +4.22 |
| 5 | CHIX | 197.78 | n/a |
| 6 | BATE | 327.27 | +17.75 |

Monthly Spread Trend



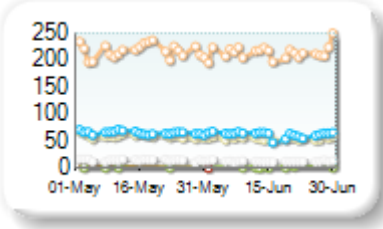
Spreads measure the bid to offer spread of the best visible orders in the book. The result is averaged over the stocks in the index and is based on measurements of the order books every 30 seconds. The value for the spread is quoted in basis points (0.01%).

Book Depths

10BPS Depth (top of book)

| Rank | Venue | Depth (1K EUR) | Change |
|------|-------|----------------|--------|
| 1 | XMAD | 213.9 | -2.6 |
| 2 | AQEU | 62.6 | -0.2 |
| 3 | CEUX | 55.4 | -4.5 |
| 4 | TQEX | 13.1 | -2.1 |
| 5 | TRQX | 3.1 | -0.2 |
| 6 | BATE | 1.6 | +0.1 |
| 7 | CHIX | 0.8 | +0.1 |

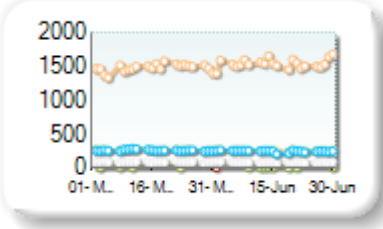
Monthly Depth Trend



50BPS Depth (deeper into book)

| Rank | Venue | Depth (1K EUR) | Change |
|------|-------|----------------|--------|
| 1 | XMAD | 1,532.4 | +62.4 |
| 2 | CEUX | 258.8 | -7.2 |
| 3 | AQEU | 246.8 | -2.0 |
| 4 | TQEX | 82.3 | -6.5 |
| 5 | BATE | 8.5 | -0.4 |
| 6 | CHIX | 7.3 | -1.2 |
| 7 | TRQX | 3.4 | -0.2 |

Monthly Depth Trend



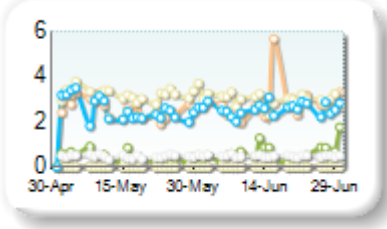
Market depth measures the amount of visible liquidity (bids and offers) in the order book within 10 or 50 BPS of mid price. The result is averaged over the stocks in the index and is based on measurements of the order book every 30 seconds. This is quoted in '000s of EUR.

Best Prices

At touch

| Rank | Venue | Best Price (%) | Change |
|------|-------|----------------|--------|
| 1 | CEUX | 2.95 | -0.14 |
| 2 | XMAD | 2.81 | +0.32 |
| 3 | AQEU | 2.57 | +0.23 |
| 4 | BATE | 0.61 | +0.09 |
| 5 | TQEX | 0.49 | +0.02 |
| 6 | CHIX | 0.00 | +0.00 |
| 7 | TRQX | 0.00 | 0.00 |
| 8 | AQXE | 0.00 | +0.00 |

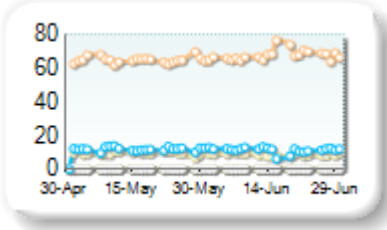
Best Prices Trend



25k EUR deal

| Rank | Venue | Best Price (%) | Change |
|------|-------|----------------|--------|
| 1 | XMAD | 67.34 | +2.81 |
| 2 | AQEU | 11.40 | -0.02 |
| 3 | CEUX | 8.90 | -0.45 |
| 4 | TQEX | 0.37 | -0.02 |
| 5 | BATE | 0.07 | +0.02 |
| 6 | CHIX | 0.00 | 0.00 |
| 7 | TRQX | 0.00 | +0.00 |
| 8 | AQXE | 0.00 | +0.00 |

Best Prices Trend

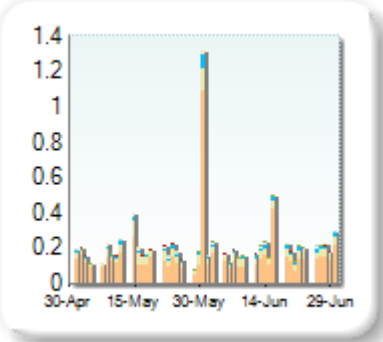


Best Price % measures how often each venue posts an absolute best price (no ties) for stocks. The result is averaged over the stocks in the index and is based on measurements of the order book every 5 seconds.

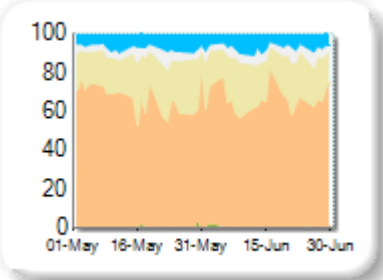
Market Share

| Rank | Venue | Market Share | Change |
|------|-------|--------------|--------|
| 1 | XMAD | 67.27% | -2.50 |
| 2 | CEUX | 20.37% | +1.71 |
| 3 | AQEU | 6.95% | -0.06 |
| 4 | TQEX | 4.83% | +0.83 |
| 5 | BATE | 0.55% | +0.12 |
| 6 | TRQX | 0.02% | -0.05 |
| 7 | AQXE | 0.01% | +0.01 |
| 8 | CHIX | 0.01% | -0.05 |

Volume Trend



Market Share Trend



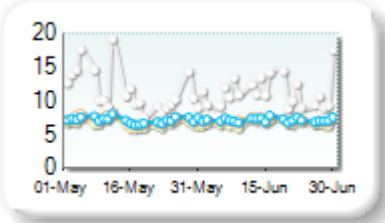
Market share is based on on-book value traded during continuous trading. The share is calculated by averaging over all stocks in the index. The current value shown is for last week and the change is relative to the previous week.

Spreads

At touch

| Rank | Venue | Spread (bps) | Change |
|------|-------|--------------|---------|
| 1 | CEUX | 6.68 | +0.08 |
| 2 | AQEU | 7.14 | +0.02 |
| 3 | XMAD | 7.14 | -0.08 |
| 4 | TQEX | 11.27 | -0.07 |
| 5 | BATE | 392.01 | +124.10 |

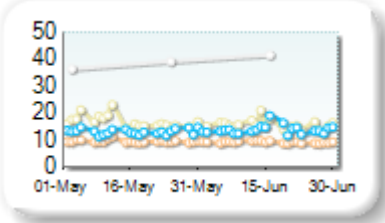
Monthly Spread Trend



25k EUR deal

| Rank | Venue | Spread (bps) | Change |
|------|-------|--------------|--------|
| 1 | XMAD | 9.33 | -0.30 |
| 2 | AQEU | 13.88 | +0.78 |
| 3 | CEUX | 15.49 | -1.21 |
| 4 | TQEX | 74.65 | +1.32 |

Monthly Spread Trend



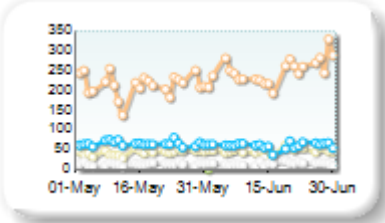
Spreads measure the bid to offer spread of the best visible orders in the book. The result is averaged over the stocks in the index and is based on measurements of the order books every 30 seconds. The value for the spread is quoted in basis points (0.01%).

Book Depths

10BPS Depth (top of book)

| Rank | Venue | Depth (1K EUR) | Change |
|------|-------|----------------|--------|
| 1 | XMAD | 249.5 | +35.0 |
| 2 | AQEU | 60.6 | -2.0 |
| 3 | CEUX | 48.5 | +5.4 |
| 4 | TQEX | 14.8 | +1.1 |
| 5 | BATE | 0.4 | -0.2 |

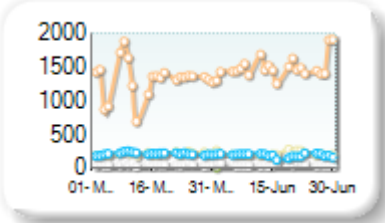
Monthly Depth Trend



50BPS Depth (deeper into book)

| Rank | Venue | Depth (1K EUR) | Change |
|------|-------|----------------|--------|
| 1 | XMAD | 1,490.0 | +173.1 |
| 2 | CEUX | 209.6 | +8.2 |
| 3 | AQEU | 192.1 | -13.8 |
| 4 | TQEX | 62.2 | +6.1 |
| 5 | BATE | 8.7 | -1.1 |

Monthly Depth Trend



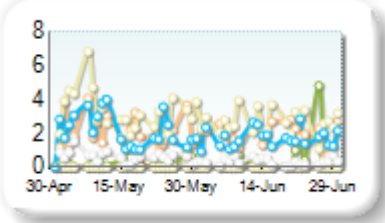
Market depth measures the amount of visible liquidity (bids and offers) in the order book within 10 or 50 BPS of mid price. The result is averaged over the stocks in the index and is based on measurements of the order book every 30 seconds. This is quoted in '000s of EUR.

Best Prices

At touch

| Rank | Venue | Best Price (%) | Change |
|------|-------|----------------|--------|
| 1 | CEUX | 2.65 | -0.27 |
| 2 | XMAD | 1.96 | +0.38 |
| 3 | AQEU | 1.71 | +0.04 |
| 4 | BATE | 0.55 | +0.18 |
| 5 | TQEX | 0.33 | -0.29 |
| 6 | CHIX | 0.00 | -0.01 |
| 7 | TRQX | 0.00 | +0.00 |
| 8 | AQXE | 0.00 | +0.00 |

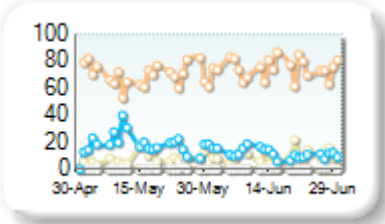
Best Prices Trend



25k EUR deal

| Rank | Venue | Best Price (%) | Change |
|------|-------|----------------|--------|
| 1 | XMAD | 74.33 | +4.92 |
| 2 | AQEU | 11.71 | -6.50 |
| 3 | CEUX | 10.16 | +2.12 |
| 4 | TQEX | 0.39 | +0.14 |
| 5 | CHIX | 0.00 | +0.00 |
| 6 | TRQX | 0.00 | +0.00 |
| 7 | BATE | 0.00 | +0.00 |
| 8 | AQXE | 0.00 | +0.00 |

Best Prices Trend

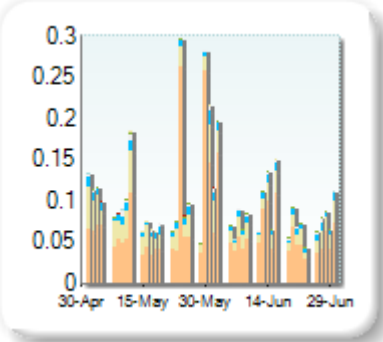


Best Price % measures how often each venue posts an absolute best price (no ties) for stocks. The result is averaged over the stocks in the index and is based on measurements of the order book every 5 seconds.

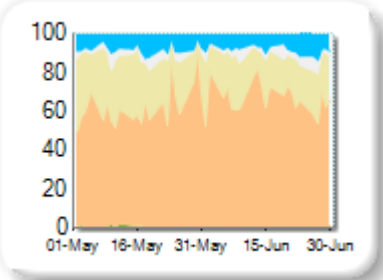
Market Share

| Rank | Venue | Market Share | Change |
|------|-------|--------------|--------|
| 1 | XMAD | 67.91% | +1.70 |
| 2 | CEUX | 20.65% | -2.73 |
| 3 | AQEU | 7.83% | +0.94 |
| 4 | TQEX | 3.45% | +0.53 |
| 5 | BATE | 0.15% | -0.34 |
| 6 | TRQX | 0.01% | -0.05 |
| 7 | CHIX | 0.01% | -0.03 |
| 8 | AQXE | 0.00% | -0.01 |

Volume Trend



Market Share Trend



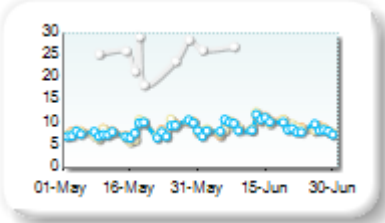
Market share is based on on-book value traded during continuous trading. The share is calculated by averaging over all stocks in the index. The current value shown is for last week and the change is relative to the previous week.

Spreads

At touch

| Rank | Venue | Spread (bps) | Change |
|------|-------|--------------|--------|
| 1 | AQEU | 9.13 | +0.98 |
| 2 | CEUX | 9.24 | +1.02 |
| 3 | XMAD | 9.26 | +0.86 |
| 4 | TQEX | 41.72 | +5.49 |
| 5 | BATE | 461.27 | -1.14 |

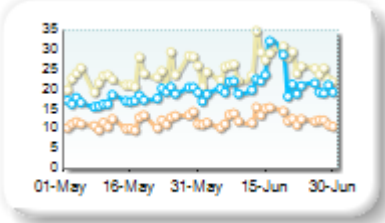
Monthly Spread Trend



25k EUR deal

| Rank | Venue | Spread (bps) | Change |
|------|-------|--------------|--------|
| 1 | XMAD | 12.54 | +0.93 |
| 2 | AQEU | 21.26 | +3.30 |
| 3 | CEUX | 25.95 | +2.15 |
| 4 | BATE | 443.95 | n/a |

Monthly Spread Trend



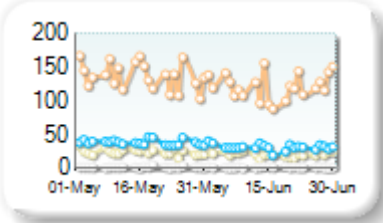
Spreads measure the bid to offer spread of the best visible orders in the book. The result is averaged over the stocks in the index and is based on measurements of the order books every 30 seconds. The value for the spread is quoted in basis points (0.01%).

Book Depths

10BPS Depth (top of book)

| Rank | Venue | Depth (1K EUR) | Change |
|------|-------|----------------|--------|
| 1 | XMAD | 120.9 | -15.3 |
| 2 | AQEU | 31.3 | -5.3 |
| 3 | CEUX | 21.0 | -3.2 |
| 4 | TQEX | 1.6 | -0.5 |
| 5 | BATE | 0.0 | 0.0 |

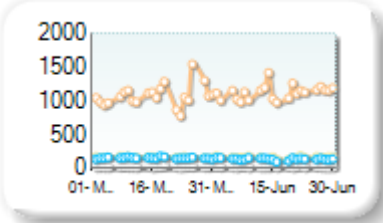
Monthly Depth Trend



50BPS Depth (deeper into book)

| Rank | Venue | Depth (1K EUR) | Change |
|------|-------|----------------|--------|
| 1 | XMAD | 1,119.3 | +46.3 |
| 2 | CEUX | 158.2 | -4.7 |
| 3 | AQEU | 136.5 | -9.1 |
| 4 | TQEX | 25.8 | -2.3 |
| 5 | BATE | 1.4 | -0.5 |

Monthly Depth Trend



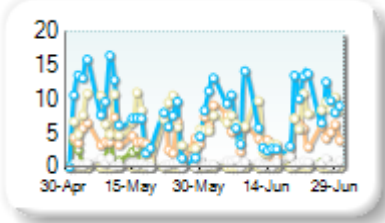
Market depth measures the amount of visible liquidity (bids and offers) in the order book within 10 or 50 BPS of mid price. The result is averaged over the stocks in the index and is based on measurements of the order book every 30 seconds. This is quoted in '000s of EUR.

Best Prices

At touch

| Rank | Venue | Best Price (%) | Change |
|------|-------|----------------|--------|
| 1 | AQEU | 8.31 | +1.46 |
| 2 | CEUX | 6.42 | +0.23 |
| 3 | XMAD | 4.84 | +0.88 |
| 4 | TQEX | 0.61 | +0.09 |
| 5 | BATE | 0.13 | -0.71 |
| 6 | CHIX | 0.00 | +0.00 |
| 7 | TRQX | 0.00 | +0.00 |
| 8 | AQXE | 0.00 | +0.00 |

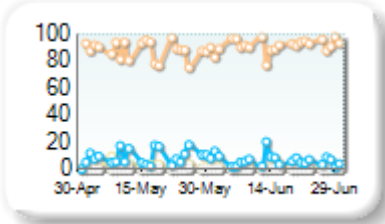
Best Prices Trend



25k EUR deal

| Rank | Venue | Best Price (%) | Change |
|------|-------|----------------|--------|
| 1 | XMAD | 91.20 | +3.37 |
| 2 | AQEU | 6.58 | -2.26 |
| 3 | CEUX | 1.85 | -0.42 |
| 4 | TQEX | 0.03 | -0.02 |
| 5 | CHIX | 0.00 | +0.00 |
| 6 | TRQX | 0.00 | +0.00 |
| 7 | BATE | 0.00 | +0.00 |
| 8 | AQXE | 0.00 | +0.00 |

Best Prices Trend

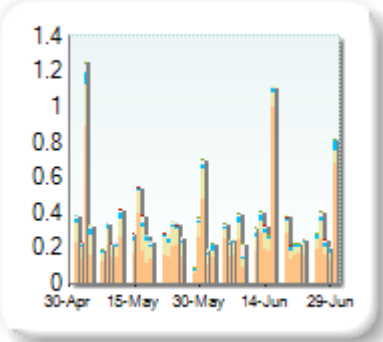


Best Price % measures how often each venue posts an absolute best price (no ties) for stocks. The result is averaged over the stocks in the index and is based on measurements of the order book every 5 seconds.

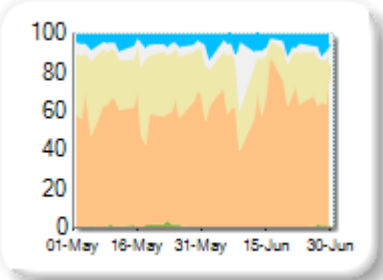
Market Share

| Rank | Venue | Market Share | Change |
|------|-------|--------------|--------|
| 1 | XMAD | 69.37% | +7.81 |
| 2 | CEUX | 18.99% | -8.40 |
| 3 | AQEU | 6.10% | +1.21 |
| 4 | TQEX | 5.03% | +0.01 |
| 5 | BATE | 0.48% | -0.31 |
| 6 | CHIX | 0.01% | -0.18 |
| 7 | TRQX | 0.01% | -0.13 |
| 8 | AQXE | 0.00% | 0.00 |

Volume Trend



Market Share Trend



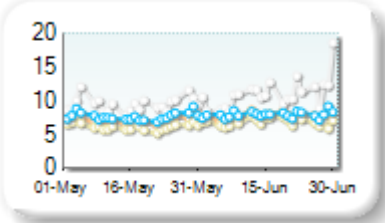
Market share is based on on-book value traded during continuous trading. The share is calculated by averaging over all stocks in the index. The current value shown is for last week and the change is relative to the previous week.

Spreads

At touch

| Rank | Venue | Spread (bps) | Change |
|------|-------|--------------|--------|
| 1 | CEUX | 6.89 | +0.69 |
| 2 | XMAD | 7.70 | +0.53 |
| 3 | AQEU | 7.92 | +0.29 |
| 4 | TQEX | 11.04 | +1.62 |
| 5 | BATE | 68.83 | +35.68 |

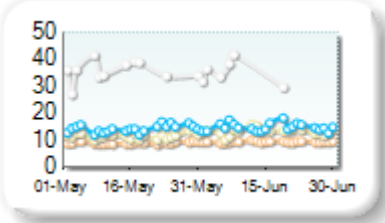
Monthly Spread Trend



25k EUR deal

| Rank | Venue | Spread (bps) | Change |
|------|-------|--------------|--------|
| 1 | XMAD | 9.44 | +0.36 |
| 2 | CEUX | 13.31 | +1.70 |
| 3 | AQEU | 14.79 | +0.52 |
| 4 | TQEX | 52.57 | +10.16 |

Monthly Spread Trend



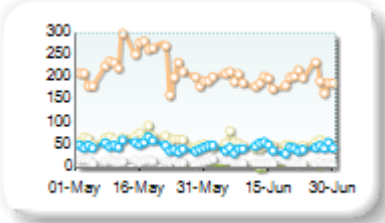
Spreads measure the bid to offer spread of the best visible orders in the book. The result is averaged over the stocks in the index and is based on measurements of the order books every 30 seconds. The value for the spread is quoted in basis points (0.01%).

Book Depths

10BPS Depth (top of book)

| Rank | Venue | Depth (1K EUR) | Change |
|------|-------|----------------|--------|
| 1 | XMAD | 196.9 | -30.5 |
| 2 | CEUX | 52.8 | -11.8 |
| 3 | AQEU | 45.5 | -1.8 |
| 4 | TQEX | 12.7 | -2.9 |
| 5 | BATE | 1.6 | -1.5 |

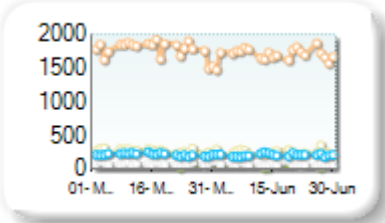
Monthly Depth Trend



50BPS Depth (deeper into book)

| Rank | Venue | Depth (1K EUR) | Change |
|------|-------|----------------|--------|
| 1 | XMAD | 1,694.7 | -75.7 |
| 2 | CEUX | 251.6 | -17.8 |
| 3 | AQEU | 211.3 | +2.3 |
| 4 | TQEX | 73.8 | -10.0 |
| 5 | BATE | 15.2 | -2.1 |
| 6 | CHIX | 1.1 | -0.5 |

Monthly Depth Trend



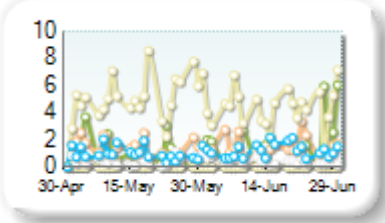
Market depth measures the amount of visible liquidity (bids and offers) in the order book within 10 or 50 BPS of mid price. The result is averaged over the stocks in the index and is based on measurements of the order book every 30 seconds. This is quoted in '000s of EUR.

Best Prices

At touch

| Rank | Venue | Best Price (%) | Change |
|------|-------|----------------|--------|
| 1 | CEUX | 4.33 | -0.66 |
| 2 | XMAD | 1.48 | +0.06 |
| 3 | BATE | 1.22 | -0.07 |
| 4 | AQEU | 1.22 | +0.27 |
| 5 | TQEX | 0.41 | +0.04 |
| 6 | CHIX | 0.00 | 0.00 |
| 7 | TRQX | 0.00 | +0.00 |
| 8 | AQXE | 0.00 | +0.00 |

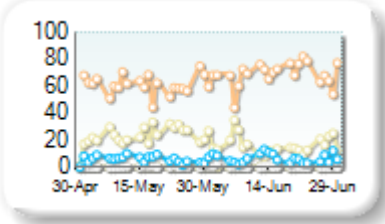
Best Prices Trend



25k EUR deal

| Rank | Venue | Best Price (%) | Change |
|------|-------|----------------|--------|
| 1 | XMAD | 68.67 | +7.66 |
| 2 | CEUX | 16.20 | -6.89 |
| 3 | AQEU | 6.65 | +0.73 |
| 4 | TQEX | 0.56 | +0.01 |
| 5 | BATE | 0.00 | -0.04 |
| 6 | CHIX | 0.00 | +0.00 |
| 7 | TRQX | 0.00 | +0.00 |
| 8 | AQXE | 0.00 | +0.00 |

Best Prices Trend

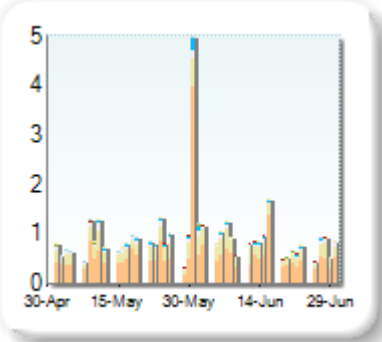


Best Price % measures how often each venue posts an absolute best price (no ties) for stocks. The result is averaged over the stocks in the index and is based on measurements of the order book every 5 seconds.

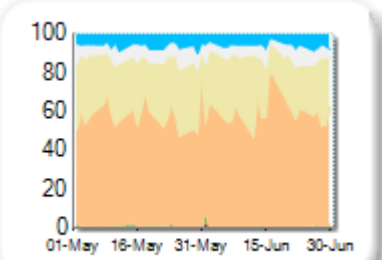
Market Share

| Rank | Venue | Market Share | Change |
|------|-------|--------------|--------|
| 1 | XMAD | 58.94% | -2.47 |
| 2 | CEUX | 27.65% | +2.28 |
| 3 | TQEX | 6.44% | -0.09 |
| 4 | AQEU | 5.79% | -0.06 |
| 5 | BATE | 0.89% | +0.42 |
| 6 | CHIX | 0.21% | -0.04 |
| 7 | TRQX | 0.07% | -0.04 |
| 8 | AQXE | 0.00% | 0.00 |

Volume Trend



Market Share Trend



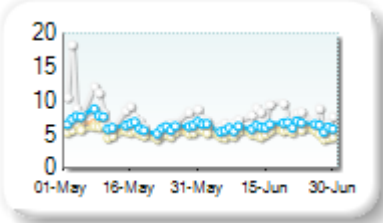
Market share is based on on-book value traded during continuous trading. The share is calculated by averaging over all stocks in the index. The current value shown is for last week and the change is relative to the previous week.

Spreads

At touch

| Rank | Venue | Spread (bps) | Change |
|------|-------|--------------|--------|
| 1 | CEUX | 5.10 | -0.24 |
| 2 | XMAD | 5.71 | -0.30 |
| 3 | AQEU | 6.15 | -0.41 |
| 4 | TQEX | 7.44 | -0.84 |
| 5 | BATE | 335.89 | -12.35 |

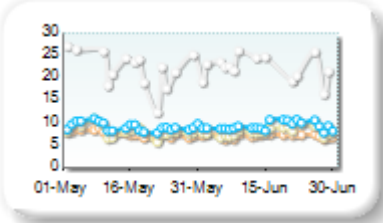
Monthly Spread Trend



25k EUR deal

| Rank | Venue | Spread (bps) | Change |
|------|-------|--------------|--------|
| 1 | XMAD | 7.18 | -0.43 |
| 2 | CEUX | 8.17 | -0.23 |
| 3 | AQEU | 9.33 | +0.13 |
| 4 | TQEX | 27.16 | -0.80 |
| 5 | BATE | 178.47 | +75.88 |

Monthly Spread Trend



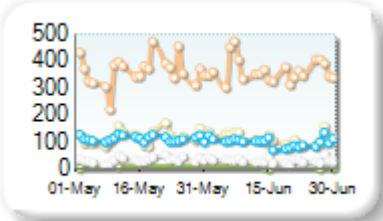
Spreads measure the bid to offer spread of the best visible orders in the book. The result is averaged over the stocks in the index and is based on measurements of the order books every 30 seconds. The value for the spread is quoted in basis points (0.01%).

Book Depths

10BPS Depth (top of book)

| Rank | Venue | Depth (1K EUR) | Change |
|------|-------|----------------|--------|
| 1 | XMAD | 364.7 | +1.6 |
| 2 | CEUX | 113.2 | -4.9 |
| 3 | AQEU | 100.7 | -8.0 |
| 4 | TQEX | 32.4 | -2.9 |
| 5 | BATE | 1.2 | +0.1 |
| 6 | CHIX | 0.8 | +0.1 |

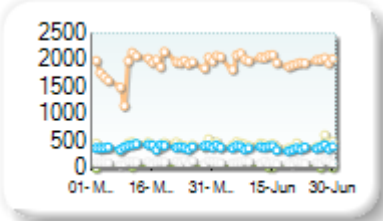
Monthly Depth Trend



50BPS Depth (deeper into book)

| Rank | Venue | Depth (1K EUR) | Change |
|------|-------|----------------|--------|
| 1 | XMAD | 1,996.0 | +109.4 |
| 2 | CEUX | 438.4 | +16.1 |
| 3 | AQEU | 379.3 | +1.7 |
| 4 | TQEX | 107.3 | -4.9 |
| 5 | CHIX | 11.6 | +2.6 |
| 6 | BATE | 7.5 | +1.9 |

Monthly Depth Trend



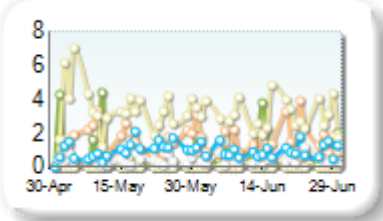
Market depth measures the amount of visible liquidity (bids and offers) in the order book within 10 or 50 BPS of mid price. The result is averaged over the stocks in the index and is based on measurements of the order book every 30 seconds. This is quoted in '000s of EUR.

Best Prices

At touch

| Rank | Venue | Best Price (%) | Change |
|------|-------|----------------|--------|
| 1 | CEUX | 2.96 | -0.43 |
| 2 | XMAD | 1.58 | +0.36 |
| 3 | AQEU | 0.97 | -0.21 |
| 4 | BATE | 0.77 | -0.12 |
| 5 | TQEX | 0.43 | -0.13 |
| 6 | CHIX | 0.00 | 0.00 |
| 7 | TRQX | 0.00 | +0.00 |
| 8 | AQXE | 0.00 | +0.00 |

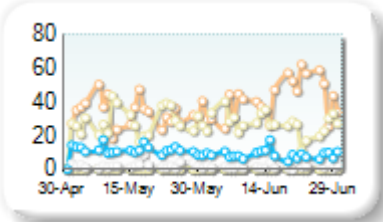
Best Prices Trend



25k EUR deal

| Rank | Venue | Best Price (%) | Change |
|------|-------|----------------|--------|
| 1 | XMAD | 41.52 | +7.93 |
| 2 | CEUX | 26.86 | +0.02 |
| 3 | AQEU | 8.80 | -2.22 |
| 4 | TQEX | 1.75 | -0.64 |
| 5 | BATE | 0.00 | -0.04 |
| 6 | CHIX | 0.00 | +0.00 |
| 7 | TRQX | 0.00 | +0.00 |
| 8 | AQXE | 0.00 | +0.00 |

Best Prices Trend

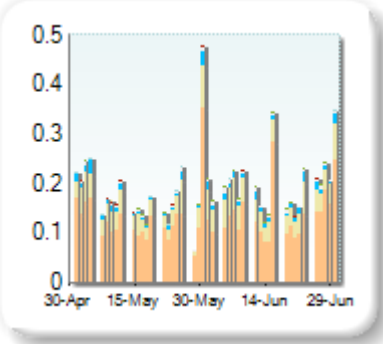


Best Price % measures how often each venue posts an absolute best price (no ties) for stocks. The result is averaged over the stocks in the index and is based on measurements of the order book every 5 seconds.

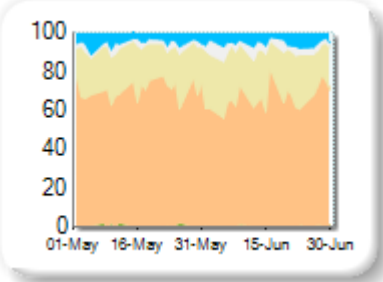
Market Share

| Rank | Venue | Market Share | Change |
|------|-------|--------------|--------|
| 1 | XMAD | 67.00% | -2.49 |
| 2 | CEUX | 23.55% | +1.98 |
| 3 | AQEU | 5.29% | -0.13 |
| 4 | TQEX | 3.74% | +0.92 |
| 5 | BATE | 0.40% | -0.12 |
| 6 | TRQX | 0.01% | -0.06 |
| 7 | CHIX | 0.00% | -0.09 |

Volume Trend



Market Share Trend



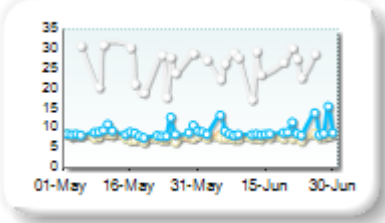
Market share is based on on-book value traded during continuous trading. The share is calculated by averaging over all stocks in the index. The current value shown is for last week and the change is relative to the previous week.

Spreads

At touch

| Rank | Venue | Spread (bps) | Change |
|------|-------|--------------|--------|
| 1 | CEUX | 7.62 | +0.01 |
| 2 | XMAD | 8.03 | +0.34 |
| 3 | AQEU | 9.39 | +0.52 |
| 4 | TQEX | 30.96 | -3.13 |
| 5 | BATE | 202.93 | -7.53 |

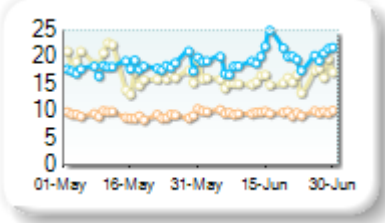
Monthly Spread Trend



25k EUR deal

| Rank | Venue | Spread (bps) | Change |
|------|-------|--------------|--------|
| 1 | XMAD | 9.73 | +0.47 |
| 2 | CEUX | 15.95 | -1.82 |
| 3 | AQEU | 19.79 | +1.60 |
| 4 | BATE | 203.32 | n/a |

Monthly Spread Trend



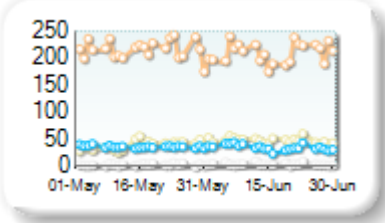
Spreads measure the bid to offer spread of the best visible orders in the book. The result is averaged over the stocks in the index and is based on measurements of the order books every 30 seconds. The value for the spread is quoted in basis points (0.01%).

Book Depths

10BPS Depth (top of book)

| Rank | Venue | Depth (1K EUR) | Change |
|------|-------|----------------|--------|
| 1 | XMAD | 209.8 | -6.1 |
| 2 | CEUX | 47.7 | +8.6 |
| 3 | AQEU | 34.9 | +0.3 |
| 4 | TQEX | 4.5 | +1.0 |
| 5 | BATE | 2.4 | -0.1 |

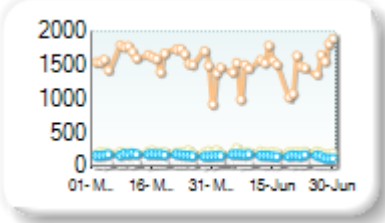
Monthly Depth Trend



50BPS Depth (deeper into book)

| Rank | Venue | Depth (1K EUR) | Change |
|------|-------|----------------|--------|
| 1 | XMAD | 1,477.8 | -104.3 |
| 2 | CEUX | 212.8 | +1.8 |
| 3 | AQEU | 154.9 | -6.5 |
| 4 | TQEX | 34.7 | -1.2 |
| 5 | BATE | 8.9 | +1.0 |

Monthly Depth Trend



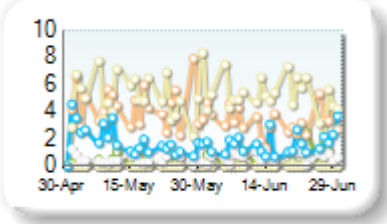
Market depth measures the amount of visible liquidity (bids and offers) in the order book within 10 or 50 BPS of mid price. The result is averaged over the stocks in the index and is based on measurements of the order book every 30 seconds. This is quoted in '000s of EUR.

Best Prices

At touch

| Rank | Venue | Best Price (%) | Change |
|------|-------|----------------|--------|
| 1 | CEUX | 5.13 | -0.34 |
| 2 | XMAD | 3.28 | -1.52 |
| 3 | AQEU | 1.65 | +0.02 |
| 4 | TQEX | 0.70 | +0.15 |
| 5 | BATE | 0.41 | +0.06 |
| 6 | CHIX | 0.00 | -0.01 |
| 7 | TRQX | 0.00 | +0.00 |
| 8 | AQXE | 0.00 | +0.00 |

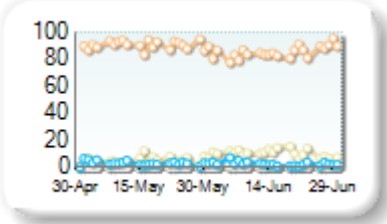
Best Prices Trend



25k EUR deal

| Rank | Venue | Best Price (%) | Change |
|------|-------|----------------|--------|
| 1 | XMAD | 85.04 | -5.11 |
| 2 | CEUX | 10.19 | +5.12 |
| 3 | AQEU | 2.50 | -0.50 |
| 4 | TQEX | 0.15 | +0.09 |
| 5 | CHIX | 0.00 | +0.00 |
| 6 | TRQX | 0.00 | +0.00 |
| 7 | BATE | 0.00 | 0.00 |
| 8 | AQXE | 0.00 | +0.00 |

Best Prices Trend

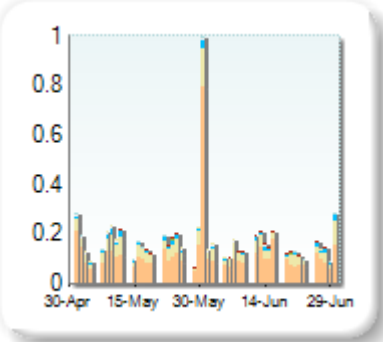


Best Price % measures how often each venue posts an absolute best price (no ties) for stocks. The result is averaged over the stocks in the index and is based on measurements of the order book every 5 seconds.

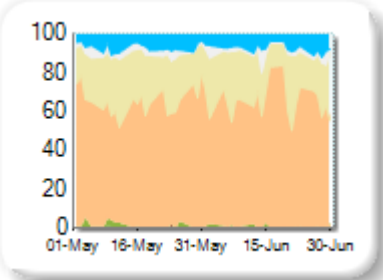
Market Share

| Rank | Venue | Market Share | Change |
|------|-------|--------------|--------|
| 1 | XMAD | 63.83% | -2.42 |
| 2 | CEUX | 24.66% | +1.55 |
| 3 | AQEU | 7.66% | +1.13 |
| 4 | TQEX | 2.95% | +0.28 |
| 5 | BATE | 0.75% | -0.37 |
| 6 | TRQX | 0.10% | -0.01 |
| 7 | CHIX | 0.05% | -0.16 |
| 8 | AQXE | 0.00% | 0.00 |

Volume Trend



Market Share Trend



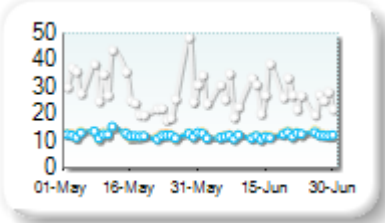
Market share is based on on-book value traded during continuous trading. The share is calculated by averaging over all stocks in the index. The current value shown is for last week and the change is relative to the previous week.

Spreads

At touch

| Rank | Venue | Spread (bps) | Change |
|------|-------|--------------|--------|
| 1 | AQEU | 11.97 | -0.30 |
| 2 | XMAD | 12.16 | -0.20 |
| 3 | CEUX | 12.17 | -0.04 |
| 4 | TQEX | 27.18 | -1.60 |
| 5 | BATE | 114.03 | -89.47 |

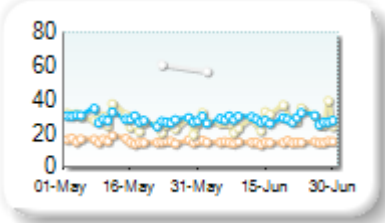
Monthly Spread Trend



25k EUR deal

| Rank | Venue | Spread (bps) | Change |
|------|-------|--------------|--------|
| 1 | XMAD | 14.81 | -0.75 |
| 2 | CEUX | 28.19 | +1.28 |
| 3 | AQEU | 28.22 | -0.30 |
| 4 | TQEX | 71.56 | +1.16 |

Monthly Spread Trend



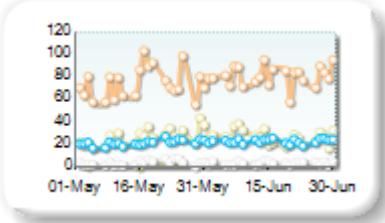
Spreads measure the bid to offer spread of the best visible orders in the book. The result is averaged over the stocks in the index and is based on measurements of the order books every 30 seconds. The value for the spread is quoted in basis points (0.01%).

Book Depths

10BPS Depth (top of book)

| Rank | Venue | Depth (1K EUR) | Change |
|------|-------|----------------|--------|
| 1 | XMAD | 80.8 | +6.3 |
| 2 | CEUX | 26.9 | 0.0 |
| 3 | AQEU | 23.1 | +2.3 |
| 4 | TQEX | 4.1 | -0.2 |
| 5 | BATE | 2.5 | -0.2 |
| 6 | CHIX | 1.9 | +0.3 |

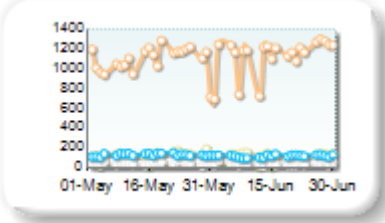
Monthly Depth Trend



50BPS Depth (deeper into book)

| Rank | Venue | Depth (1K EUR) | Change |
|------|-------|----------------|--------|
| 1 | XMAD | 1,138.2 | +45.1 |
| 2 | CEUX | 121.8 | -12.0 |
| 3 | AQEU | 113.9 | -6.8 |
| 4 | TQEX | 36.2 | -2.3 |
| 5 | BATE | 7.3 | -1.5 |
| 6 | CHIX | 4.6 | +1.1 |

Monthly Depth Trend



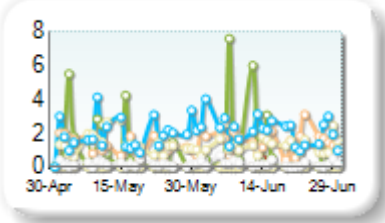
Market depth measures the amount of visible liquidity (bids and offers) in the order book within 10 or 50 BPS of mid price. The result is averaged over the stocks in the index and is based on measurements of the order book every 30 seconds. This is quoted in '000s of EUR.

Best Prices

At touch

| Rank | Venue | Best Price (%) | Change |
|------|-------|----------------|--------|
| 1 | AQEU | 2.14 | +0.29 |
| 2 | XMAD | 1.56 | +0.52 |
| 3 | CEUX | 1.30 | -0.04 |
| 4 | BATE | 0.93 | +0.41 |
| 5 | TQEX | 0.20 | +0.08 |
| 6 | CHIX | 0.02 | +0.03 |
| 7 | TRQX | 0.00 | +0.00 |
| 8 | AQXE | 0.00 | +0.00 |

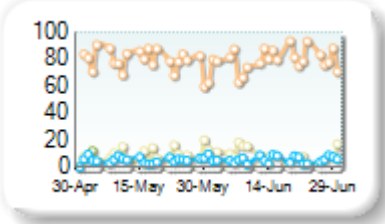
Best Prices Trend



25k EUR deal

| Rank | Venue | Best Price (%) | Change |
|------|-------|----------------|--------|
| 1 | XMAD | 79.66 | +1.29 |
| 2 | CEUX | 8.03 | -0.93 |
| 3 | AQEU | 5.56 | +0.17 |
| 4 | BATE | 0.05 | -0.90 |
| 5 | TQEX | 0.01 | 0.00 |
| 6 | CHIX | 0.00 | +0.00 |
| 7 | TRQX | 0.00 | +0.00 |
| 8 | AQXE | 0.00 | +0.00 |

Best Prices Trend

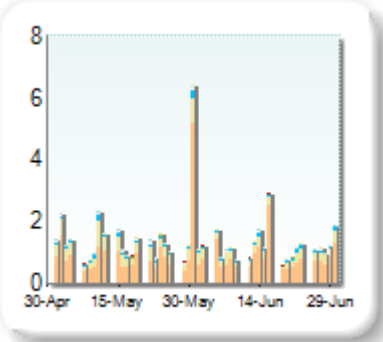


Best Price % measures how often each venue posts an absolute best price (no ties) for stocks. The result is averaged over the stocks in the index and is based on measurements of the order book every 5 seconds.

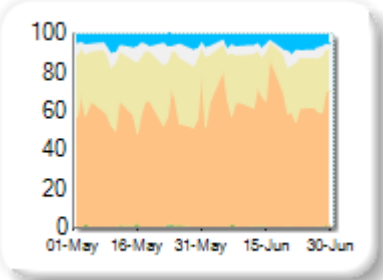
Market Share

| Rank | Venue | Market Share | Change |
|------|-------|--------------|--------|
| 1 | XMAD | 66.39% | +3.57 |
| 2 | CEUX | 22.71% | -3.15 |
| 3 | AQEU | 5.69% | +0.33 |
| 4 | TQEX | 4.34% | -0.78 |
| 5 | BATE | 0.73% | +0.24 |
| 6 | TRQX | 0.09% | -0.06 |
| 7 | CHIX | 0.04% | -0.16 |
| 8 | AQXE | 0.01% | +0.00 |

Volume Trend



Market Share Trend



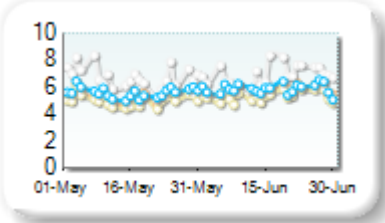
Market share is based on on-book value traded during continuous trading. The share is calculated by averaging over all stocks in the index. The current value shown is for last week and the change is relative to the previous week.

Spreads

At touch

| Rank | Venue | Spread (bps) | Change |
|------|-------|--------------|--------|
| 1 | CEUX | 5.35 | +0.31 |
| 2 | XMAD | 5.77 | +0.39 |
| 3 | AQEU | 5.87 | +0.29 |
| 4 | TQEX | 6.89 | +0.16 |
| 5 | BATE | 306.20 | -74.36 |

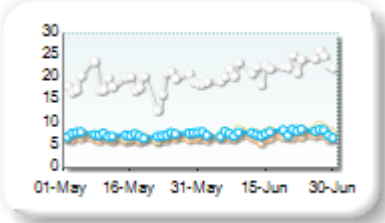
Monthly Spread Trend



25k EUR deal

| Rank | Venue | Spread (bps) | Change |
|------|-------|--------------|--------|
| 1 | XMAD | 6.85 | +0.35 |
| 2 | AQEU | 7.81 | +0.37 |
| 3 | CEUX | 8.12 | +0.86 |
| 4 | TQEX | 22.12 | +3.18 |
| 5 | BATE | 328.57 | +95.09 |

Monthly Spread Trend



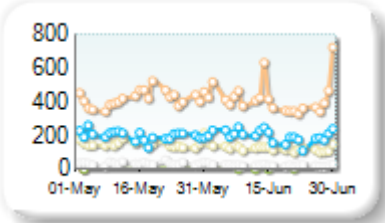
Spreads measure the bid to offer spread of the best visible orders in the book. The result is averaged over the stocks in the index and is based on measurements of the order books every 30 seconds. The value for the spread is quoted in basis points (0.01%).

Book Depths

10BPS Depth (top of book)

| Rank | Venue | Depth (1K EUR) | Change |
|------|-------|----------------|--------|
| 1 | XMAD | 419.6 | +1.2 |
| 2 | AQEU | 197.9 | +7.5 |
| 3 | CEUX | 124.6 | -27.6 |
| 4 | TQEX | 24.9 | -10.2 |
| 5 | BATE | 0.9 | +0.4 |
| 6 | CHIX | 0.0 | +0.0 |

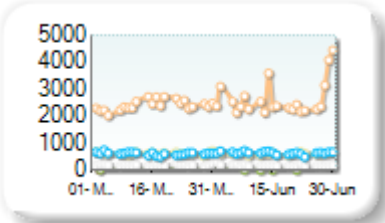
Monthly Depth Trend



50BPS Depth (deeper into book)

| Rank | Venue | Depth (1K EUR) | Change |
|------|-------|----------------|--------|
| 1 | XMAD | 2,635.8 | +228.9 |
| 2 | AQEU | 640.6 | +49.3 |
| 3 | CEUX | 610.6 | -4.8 |
| 4 | TQEX | 175.4 | -8.3 |
| 5 | BATE | 9.7 | +3.1 |
| 6 | CHIX | 5.0 | -5.8 |

Monthly Depth Trend



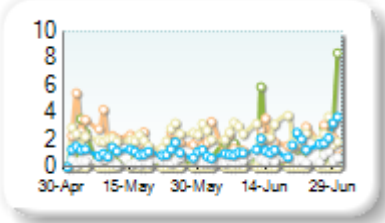
Market depth measures the amount of visible liquidity (bids and offers) in the order book within 10 or 50 BPS of mid price. The result is averaged over the stocks in the index and is based on measurements of the order book every 30 seconds. This is quoted in '000s of EUR.

Best Prices

At touch

| Rank | Venue | Best Price (%) | Change |
|------|-------|----------------|--------|
| 1 | CEUX | 2.47 | +0.46 |
| 2 | XMAD | 1.96 | -0.63 |
| 3 | BATE | 1.56 | +0.30 |
| 4 | AQEU | 1.54 | +0.63 |
| 5 | TQEX | 0.55 | +0.06 |
| 6 | CHIX | 0.01 | +0.00 |
| 7 | TRQX | 0.00 | +0.00 |
| 8 | AQXE | 0.00 | +0.00 |

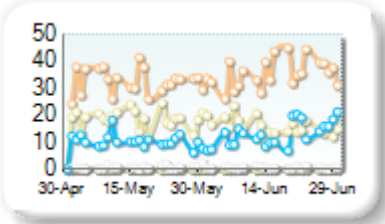
Best Prices Trend



25k EUR deal

| Rank | Venue | Best Price (%) | Change |
|------|-------|----------------|--------|
| 1 | XMAD | 35.32 | +2.88 |
| 2 | CEUX | 15.84 | -1.90 |
| 3 | AQEU | 13.11 | +3.13 |
| 4 | TQEX | 0.66 | -0.16 |
| 5 | BATE | 0.06 | +0.00 |
| 6 | CHIX | 0.00 | +0.00 |
| 7 | TRQX | 0.00 | +0.00 |
| 8 | AQXE | 0.00 | +0.00 |

Best Prices Trend

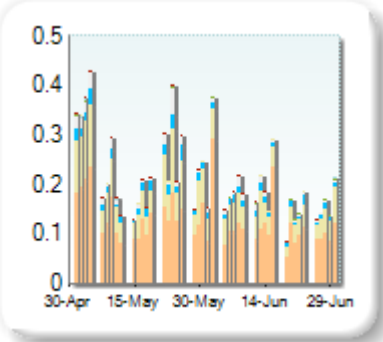


Best Price % measures how often each venue posts an absolute best price (no ties) for stocks. The result is averaged over the stocks in the index and is based on measurements of the order book every 5 seconds.

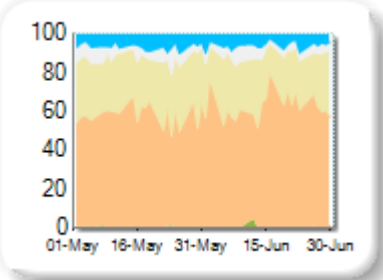
Market Share

| Rank | Venue | Market Share | Change |
|------|-------|--------------|--------|
| 1 | XMAD | 62.91% | +6.39 |
| 2 | CEUX | 25.77% | -3.72 |
| 3 | AQEU | 5.83% | -0.82 |
| 4 | TQEX | 4.89% | -1.68 |
| 5 | BATE | 0.54% | +0.21 |
| 6 | TRQX | 0.04% | -0.20 |
| 7 | CHIX | 0.01% | -0.17 |
| 8 | AQXE | 0.01% | -0.01 |

Volume Trend



Market Share Trend



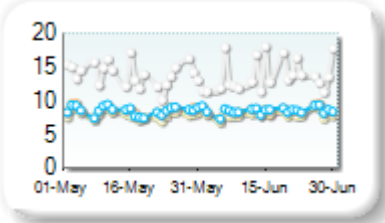
Market share is based on on-book value traded during continuous trading. The share is calculated by averaging over all stocks in the index. The current value shown is for last week and the change is relative to the previous week.

Spreads

At touch

| Rank | Venue | Spread (bps) | Change |
|------|-------|--------------|--------|
| 1 | CEUX | 7.99 | +0.02 |
| 2 | XMAD | 8.42 | -0.07 |
| 3 | AQEU | 8.53 | +0.02 |
| 4 | TQEX | 13.78 | -0.12 |
| 5 | BATE | 160.25 | +7.62 |

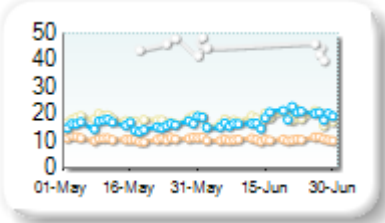
Monthly Spread Trend



25k EUR deal

| Rank | Venue | Spread (bps) | Change |
|------|-------|--------------|--------|
| 1 | XMAD | 10.63 | -0.23 |
| 2 | AQEU | 18.28 | +2.16 |
| 3 | CEUX | 18.40 | +0.39 |
| 4 | TQEX | 64.66 | +1.13 |
| 5 | BATE | 191.95 | n/a |

Monthly Spread Trend



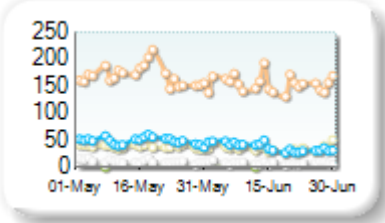
Spreads measure the bid to offer spread of the best visible orders in the book. The result is averaged over the stocks in the index and is based on measurements of the order books every 30 seconds. The value for the spread is quoted in basis points (0.01%).

Book Depths

10BPS Depth (top of book)

| Rank | Venue | Depth (1K EUR) | Change |
|------|-------|----------------|--------|
| 1 | XMAD | 154.3 | -15.0 |
| 2 | AQEU | 37.1 | -9.7 |
| 3 | CEUX | 34.5 | -4.7 |
| 4 | TQEX | 8.3 | -2.9 |
| 5 | BATE | 1.6 | 0.0 |
| 6 | CHIX | 0.1 | +0.0 |

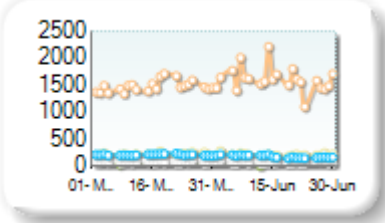
Monthly Depth Trend



50BPS Depth (deeper into book)

| Rank | Venue | Depth (1K EUR) | Change |
|------|-------|----------------|--------|
| 1 | XMAD | 1,602.1 | +127.5 |
| 2 | CEUX | 215.1 | -7.4 |
| 3 | AQEU | 181.3 | -20.6 |
| 4 | TQEX | 67.4 | -5.6 |
| 5 | BATE | 6.6 | -3.9 |
| 6 | CHIX | 6.4 | -0.6 |

Monthly Depth Trend



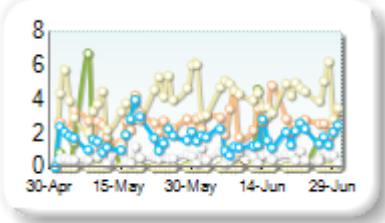
Market depth measures the amount of visible liquidity (bids and offers) in the order book within 10 or 50 BPS of mid price. The result is averaged over the stocks in the index and is based on measurements of the order book every 30 seconds. This is quoted in '000s of EUR.

Best Prices

At touch

| Rank | Venue | Best Price (%) | Change |
|------|-------|----------------|--------|
| 1 | CEUX | 4.22 | -0.20 |
| 2 | XMAD | 2.79 | +0.12 |
| 3 | AQEU | 1.70 | -0.01 |
| 4 | TQEX | 0.64 | +0.06 |
| 5 | BATE | 0.37 | -0.28 |
| 6 | CHIX | 0.01 | +0.01 |
| 7 | TRQX | 0.00 | +0.00 |
| 8 | AQXE | 0.00 | +0.00 |

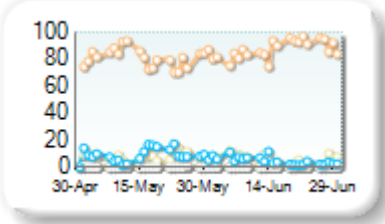
Best Prices Trend



25k EUR deal

| Rank | Venue | Best Price (%) | Change |
|------|-------|----------------|--------|
| 1 | XMAD | 87.02 | +6.10 |
| 2 | CEUX | 5.95 | -1.29 |
| 3 | AQEU | 4.77 | -4.11 |
| 4 | TQEX | 0.05 | -0.08 |
| 5 | CHIX | 0.00 | +0.00 |
| 6 | TRQX | 0.00 | +0.00 |
| 7 | BATE | 0.00 | -0.01 |
| 8 | AQXE | 0.00 | +0.00 |

Best Prices Trend

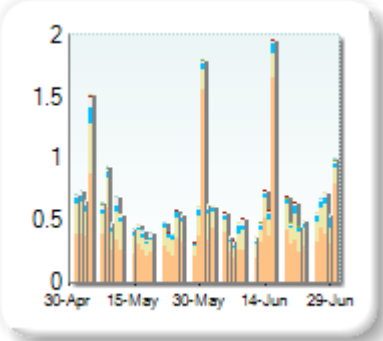


Best Price % measures how often each venue posts an absolute best price (no ties) for stocks. The result is averaged over the stocks in the index and is based on measurements of the order book every 5 seconds.

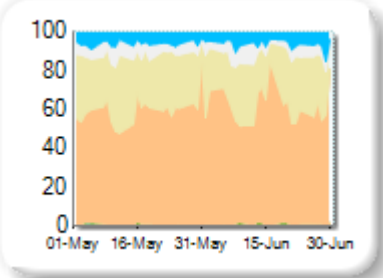
Market Share

| Rank | Venue | Market Share | Change |
|------|-------|--------------|--------|
| 1 | XMAD | 64.43% | +3.41 |
| 2 | CEUX | 23.44% | -3.11 |
| 3 | AQEU | 6.29% | +0.12 |
| 4 | TQEX | 4.97% | -0.55 |
| 5 | BATE | 0.78% | +0.37 |
| 6 | CHIX | 0.07% | -0.10 |
| 7 | TRQX | 0.01% | -0.13 |
| 8 | AQXE | 0.00% | +0.00 |

Volume Trend



Market Share Trend



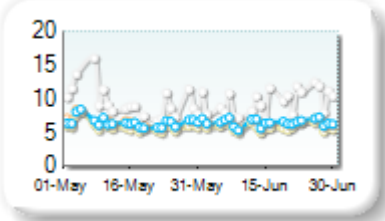
Market share is based on on-book value traded during continuous trading. The share is calculated by averaging over all stocks in the index. The current value shown is for last week and the change is relative to the previous week.

Spreads

At touch

| Rank | Venue | Spread (bps) | Change |
|------|-------|--------------|--------|
| 1 | CEUX | 5.81 | -0.11 |
| 2 | XMAD | 6.25 | -0.37 |
| 3 | AQEU | 6.46 | -0.03 |
| 4 | TQEX | 9.57 | -0.62 |
| 5 | BATE | 231.89 | -85.92 |

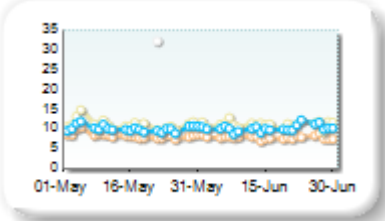
Monthly Spread Trend



25k EUR deal

| Rank | Venue | Spread (bps) | Change |
|------|-------|--------------|--------|
| 1 | XMAD | 7.84 | -0.49 |
| 2 | AQEU | 10.18 | +0.10 |
| 3 | CEUX | 11.16 | +0.17 |
| 4 | TQEX | 56.85 | +7.11 |

Monthly Spread Trend



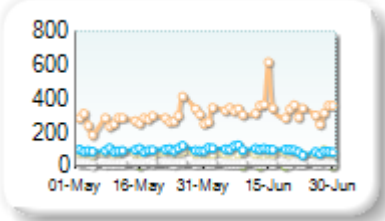
Spreads measure the bid to offer spread of the best visible orders in the book. The result is averaged over the stocks in the index and is based on measurements of the order books every 30 seconds. The value for the spread is quoted in basis points (0.01%).

Book Depths

10BPS Depth (top of book)

| Rank | Venue | Depth (1K EUR) | Change |
|------|-------|----------------|--------|
| 1 | XMAD | 337.8 | +58.0 |
| 2 | AQEU | 96.4 | +5.2 |
| 3 | CEUX | 73.3 | -3.9 |
| 4 | TQEX | 15.4 | -1.9 |
| 5 | BATE | 0.9 | +0.2 |

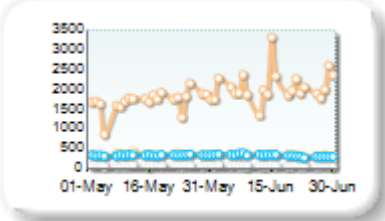
Monthly Depth Trend



50BPS Depth (deeper into book)

| Rank | Venue | Depth (1K EUR) | Change |
|------|-------|----------------|--------|
| 1 | XMAD | 2,081.2 | +370.1 |
| 2 | CEUX | 332.4 | -14.8 |
| 3 | AQEU | 326.7 | +8.0 |
| 4 | TQEX | 68.3 | -9.0 |
| 5 | BATE | 10.9 | +5.3 |
| 6 | CHIX | 0.4 | -0.4 |

Monthly Depth Trend



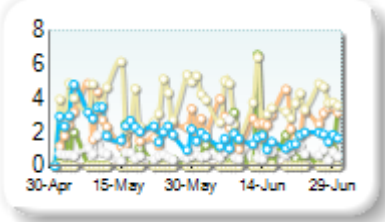
Market depth measures the amount of visible liquidity (bids and offers) in the order book within 10 or 50 BPS of mid price. The result is averaged over the stocks in the index and is based on measurements of the order book every 30 seconds. This is quoted in '000s of EUR.

Best Prices

At touch

| Rank | Venue | Best Price (%) | Change |
|------|-------|----------------|--------|
| 1 | CEUX | 3.67 | -0.20 |
| 2 | XMAD | 2.68 | +0.19 |
| 3 | AQEU | 1.56 | -0.77 |
| 4 | BATE | 1.25 | +0.63 |
| 5 | TQEX | 0.84 | -0.06 |
| 6 | CHIX | 0.00 | 0.00 |
| 7 | TRQX | 0.00 | +0.00 |
| 8 | AQXE | 0.00 | +0.00 |

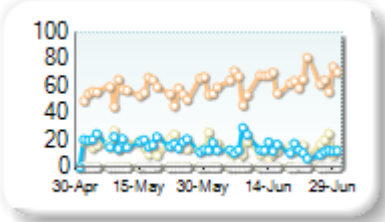
Best Prices Trend



25k EUR deal

| Rank | Venue | Best Price (%) | Change |
|------|-------|----------------|--------|
| 1 | XMAD | 63.55 | +7.04 |
| 2 | AQEU | 13.97 | -2.92 |
| 3 | CEUX | 13.17 | -2.87 |
| 4 | TQEX | 0.32 | 0.00 |
| 5 | BATE | 0.01 | +0.00 |
| 6 | CHIX | 0.00 | +0.00 |
| 7 | TRQX | 0.00 | +0.00 |
| 8 | AQXE | 0.00 | +0.00 |

Best Prices Trend

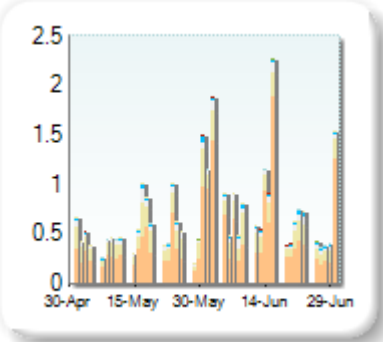


Best Price % measures how often each venue posts an absolute best price (no ties) for stocks. The result is averaged over the stocks in the index and is based on measurements of the order book every 5 seconds.

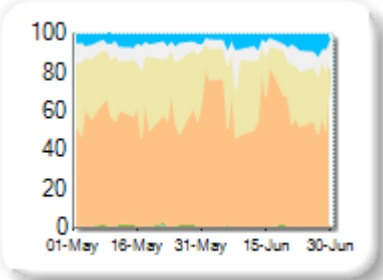
Market Share

| Rank | Venue | Market Share | Change |
|------|-------|--------------|--------|
| 1 | XMAD | 68.01% | +10.96 |
| 2 | CEUX | 20.74% | -9.02 |
| 3 | TQEX | 6.34% | -1.05 |
| 4 | AQEU | 4.40% | -0.42 |
| 5 | BATE | 0.43% | -0.21 |
| 6 | CHIX | 0.04% | -0.12 |
| 7 | TRQX | 0.03% | -0.13 |
| 8 | AQXE | 0.01% | -0.01 |

Volume Trend



Market Share Trend



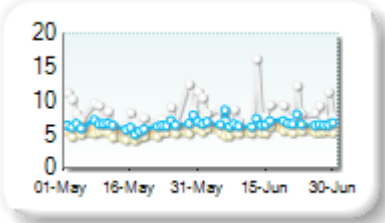
Market share is based on on-book value traded during continuous trading. The share is calculated by averaging over all stocks in the index. The current value shown is for last week and the change is relative to the previous week.

Spreads

At touch

| Rank | Venue | Spread (bps) | Change |
|------|-------|--------------|---------|
| 1 | CEUX | 5.54 | +0.36 |
| 2 | XMAD | 6.17 | +0.24 |
| 3 | AQEU | 6.71 | +0.36 |
| 4 | TQEX | 8.70 | +0.43 |
| 5 | BATE | 290.74 | +217.22 |

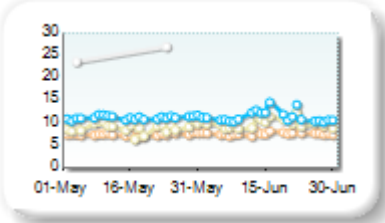
Monthly Spread Trend



25k EUR deal

| Rank | Venue | Spread (bps) | Change |
|------|-------|--------------|--------|
| 1 | XMAD | 7.74 | +0.29 |
| 2 | CEUX | 10.05 | +0.99 |
| 3 | AQEU | 11.40 | +0.18 |
| 4 | TQEX | 72.23 | -13.60 |
| 5 | BATE | 185.42 | n/a |

Monthly Spread Trend



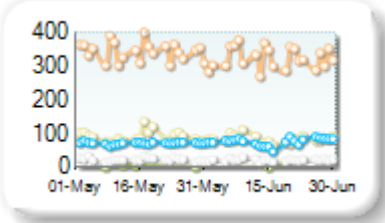
Spreads measure the bid to offer spread of the best visible orders in the book. The result is averaged over the stocks in the index and is based on measurements of the order books every 30 seconds. The value for the spread is quoted in basis points (0.01%).

Book Depths

10BPS Depth (top of book)

| Rank | Venue | Depth (1K EUR) | Change |
|------|-------|----------------|--------|
| 1 | XMAD | 323.3 | -18.5 |
| 2 | CEUX | 83.3 | -7.8 |
| 3 | AQEU | 75.6 | +7.6 |
| 4 | TQEX | 22.1 | -1.3 |
| 5 | BATE | 1.8 | -0.5 |
| 6 | CHIX | 0.0 | +0.0 |

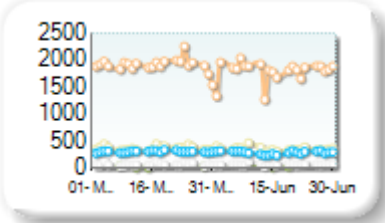
Monthly Depth Trend



50BPS Depth (deeper into book)

| Rank | Venue | Depth (1K EUR) | Change |
|------|-------|----------------|--------|
| 1 | XMAD | 1,795.3 | -107.8 |
| 2 | CEUX | 355.8 | -16.5 |
| 3 | AQEU | 290.4 | -3.7 |
| 4 | TQEX | 71.2 | -1.8 |
| 5 | CHIX | 11.1 | -1.7 |
| 6 | BATE | 9.5 | -5.4 |

Monthly Depth Trend



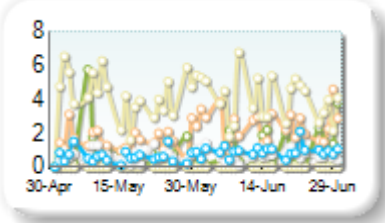
Market depth measures the amount of visible liquidity (bids and offers) in the order book within 10 or 50 BPS of mid price. The result is averaged over the stocks in the index and is based on measurements of the order book every 30 seconds. This is quoted in '000s of EUR.

Best Prices

At touch

| Rank | Venue | Best Price (%) | Change |
|------|-------|----------------|--------|
| 1 | CEUX | 3.96 | -0.17 |
| 2 | XMAD | 2.42 | +1.55 |
| 3 | BATE | 1.01 | -0.21 |
| 4 | AQEU | 0.93 | +0.28 |
| 5 | TQEX | 0.70 | +0.06 |
| 6 | CHIX | 0.00 | +0.00 |
| 7 | TRQX | 0.00 | +0.00 |
| 8 | AQXE | 0.00 | +0.00 |

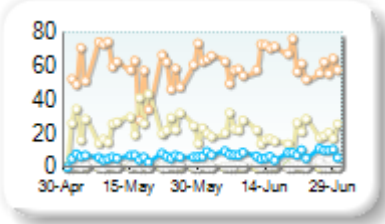
Best Prices Trend



25k EUR deal

| Rank | Venue | Best Price (%) | Change |
|------|-------|----------------|--------|
| 1 | XMAD | 61.91 | +3.68 |
| 2 | CEUX | 20.32 | -3.57 |
| 3 | AQEU | 7.84 | +2.11 |
| 4 | TQEX | 1.00 | +0.25 |
| 5 | BATE | 0.07 | +0.03 |
| 6 | CHIX | 0.00 | +0.00 |
| 7 | TRQX | 0.00 | +0.00 |
| 8 | AQXE | 0.00 | +0.00 |

Best Prices Trend

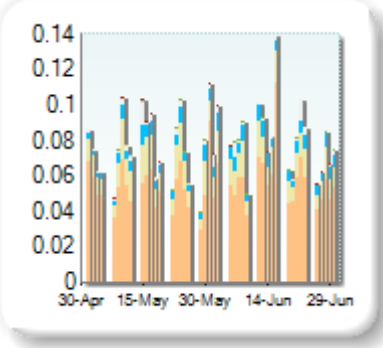


Best Price % measures how often each venue posts an absolute best price (no ties) for stocks. The result is averaged over the stocks in the index and is based on measurements of the order book every 5 seconds.

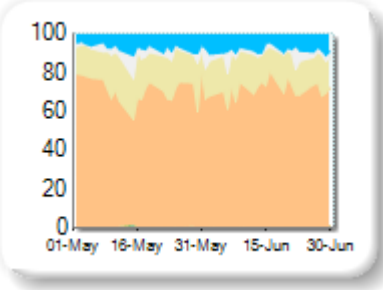
Market Share

| Rank | Venue | Market Share | Change |
|------|-------|--------------|--------|
| 1 | XMAD | 70.75% | +0.73 |
| 2 | CEUX | 16.87% | -1.83 |
| 3 | AQEU | 8.44% | +1.18 |
| 4 | TQEX | 3.74% | +0.06 |
| 5 | BATE | 0.18% | -0.05 |
| 6 | CHIX | 0.01% | -0.03 |

Volume Trend



Market Share Trend



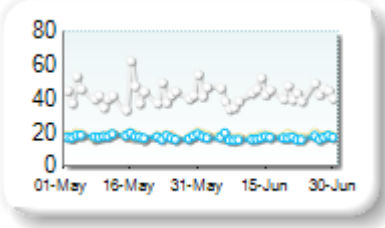
Market share is based on on-book value traded during continuous trading. The share is calculated by averaging over all stocks in the index. The current value shown is for last week and the change is relative to the previous week.

Spreads

At touch

| Rank | Venue | Spread (bps) | Change |
|------|-------|--------------|--------|
| 1 | AQEU | 16.75 | -0.75 |
| 2 | XMAD | 17.12 | -0.36 |
| 3 | CEUX | 17.90 | -0.14 |
| 4 | TQEX | 42.86 | -0.47 |

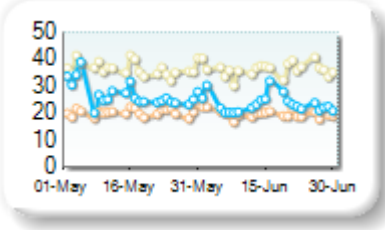
Monthly Spread Trend



25k EUR deal

| Rank | Venue | Spread (bps) | Change |
|------|-------|--------------|--------|
| 1 | XMAD | 19.73 | -0.64 |
| 2 | AQEU | 23.41 | -3.52 |
| 3 | CEUX | 36.14 | -0.39 |

Monthly Spread Trend



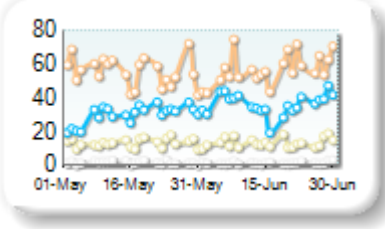
Spreads measure the bid to offer spread of the best visible orders in the book. The result is averaged over the stocks in the index and is based on measurements of the order books every 30 seconds. The value for the spread is quoted in basis points (0.01%).

Book Depths

10BPS Depth (top of book)

| Rank | Venue | Depth (1K EUR) | Change |
|------|-------|----------------|--------|
| 1 | XMAD | 56.9 | +1.8 |
| 2 | AQEU | 36.1 | +7.6 |
| 3 | CEUX | 13.4 | +0.1 |
| 4 | TQEX | 1.6 | -0.2 |
| 5 | BATE | 1.5 | +0.3 |
| 6 | CHIX | 0.0 | +0.0 |

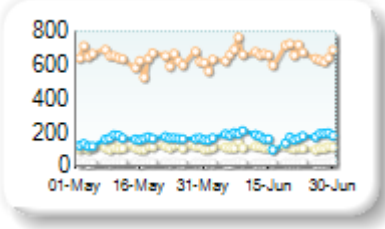
Monthly Depth Trend



50BPS Depth (deeper into book)

| Rank | Venue | Depth (1K EUR) | Change |
|------|-------|----------------|--------|
| 1 | XMAD | 659.8 | +24.1 |
| 2 | AQEU | 173.5 | +22.2 |
| 3 | CEUX | 110.9 | +1.1 |
| 4 | TQEX | 20.7 | -0.7 |
| 5 | BATE | 1.9 | +0.4 |
| 6 | CHIX | 0.0 | +0.0 |

Monthly Depth Trend



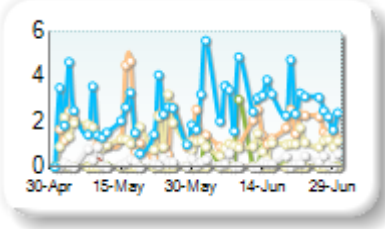
Market depth measures the amount of visible liquidity (bids and offers) in the order book within 10 or 50 BPS of mid price. The result is averaged over the stocks in the index and is based on measurements of the order book every 30 seconds. This is quoted in '000s of EUR.

Best Prices

At touch

| Rank | Venue | Best Price (%) | Change |
|------|-------|----------------|--------|
| 1 | AQEU | 3.06 | +1.51 |
| 2 | XMAD | 1.55 | +0.38 |
| 3 | CEUX | 0.99 | -0.28 |
| 4 | BATE | 0.24 | +0.27 |
| 5 | TQEX | 0.21 | -0.01 |
| 6 | CHIX | 0.00 | -0.01 |
| 7 | TRQX | 0.00 | +0.00 |
| 8 | AQXE | 0.00 | +0.00 |

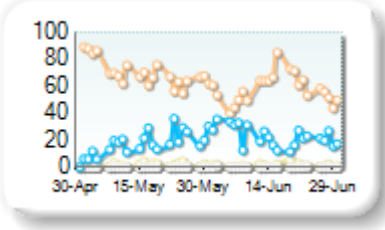
Best Prices Trend



25k EUR deal

| Rank | Venue | Best Price (%) | Change |
|------|-------|----------------|--------|
| 1 | XMAD | 57.97 | -11.49 |
| 2 | AQEU | 22.78 | +5.39 |
| 3 | CEUX | 1.55 | -0.34 |
| 4 | TQEX | 0.13 | +0.08 |
| 5 | CHIX | 0.00 | +0.00 |
| 6 | TRQX | 0.00 | +0.00 |
| 7 | BATE | 0.00 | +0.00 |
| 8 | AQXE | 0.00 | +0.00 |

Best Prices Trend

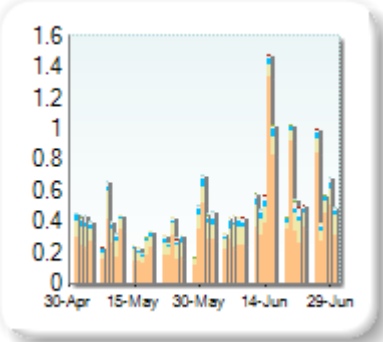


Best Price % measures how often each venue posts an absolute best price (no ties) for stocks. The result is averaged over the stocks in the index and is based on measurements of the order book every 5 seconds.

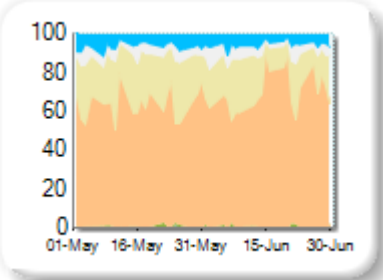
Market Share

| Rank | Venue | Market Share | Change |
|------|-------|--------------|--------|
| 1 | XMAD | 72.71% | +9.08 |
| 2 | CEUX | 16.73% | -7.05 |
| 3 | AQEU | 5.24% | -1.31 |
| 4 | TQEX | 4.58% | -0.47 |
| 5 | BATE | 0.69% | +0.02 |
| 6 | TRQX | 0.03% | -0.09 |
| 7 | CHIX | 0.02% | -0.18 |
| 8 | AQXE | 0.00% | 0.00 |

Volume Trend



Market Share Trend



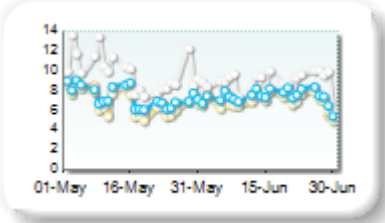
Market share is based on on-book value traded during continuous trading. The share is calculated by averaging over all stocks in the index. The current value shown is for last week and the change is relative to the previous week.

Spreads

At touch

| Rank | Venue | Spread (bps) | Change |
|------|-------|--------------|---------|
| 1 | CEUX | 6.93 | +0.19 |
| 2 | XMAD | 7.30 | +0.17 |
| 3 | AQEU | 7.42 | +0.07 |
| 4 | TQEX | 8.92 | -0.96 |
| 5 | BATE | 220.26 | -124.79 |

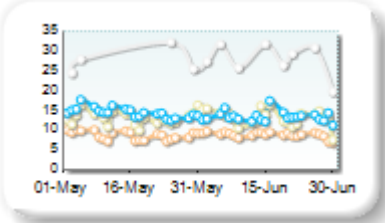
Monthly Spread Trend



25k EUR deal

| Rank | Venue | Spread (bps) | Change |
|------|-------|--------------|--------|
| 1 | XMAD | 8.76 | +0.15 |
| 2 | CEUX | 13.11 | +0.02 |
| 3 | AQEU | 13.37 | -0.99 |
| 4 | TQEX | 40.45 | -4.23 |
| 5 | BATE | 224.22 | n/a |

Monthly Spread Trend



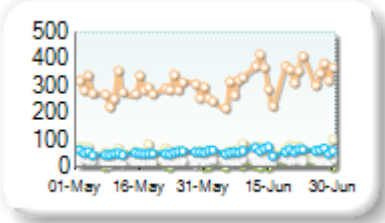
Spreads measure the bid to offer spread of the best visible orders in the book. The result is averaged over the stocks in the index and is based on measurements of the order books every 30 seconds. The value for the spread is quoted in basis points (0.01%).

Book Depths

10BPS Depth (top of book)

| Rank | Venue | Depth (1K EUR) | Change |
|------|-------|----------------|--------|
| 1 | XMAD | 325.8 | +33.0 |
| 2 | CEUX | 65.4 | +4.4 |
| 3 | AQEU | 60.9 | +10.6 |
| 4 | TQEX | 23.0 | +3.4 |
| 5 | BATE | 3.5 | +2.2 |
| 6 | CHIX | 0.0 | +0.0 |

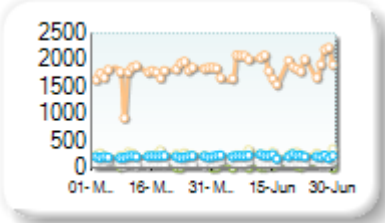
Monthly Depth Trend



50BPS Depth (deeper into book)

| Rank | Venue | Depth (1K EUR) | Change |
|------|-------|----------------|--------|
| 1 | XMAD | 1,905.6 | +138.8 |
| 2 | CEUX | 248.5 | +2.9 |
| 3 | AQEU | 226.5 | +22.4 |
| 4 | TQEX | 94.9 | +6.2 |
| 5 | BATE | 14.3 | +7.4 |
| 6 | CHIX | 3.2 | -0.1 |

Monthly Depth Trend



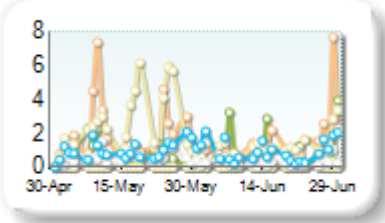
Market depth measures the amount of visible liquidity (bids and offers) in the order book within 10 or 50 BPS of mid price. The result is averaged over the stocks in the index and is based on measurements of the order book every 30 seconds. This is quoted in '000s of EUR.

Best Prices

At touch

| Rank | Venue | Best Price (%) | Change |
|------|-------|----------------|--------|
| 1 | XMAD | 1.48 | -0.09 |
| 2 | CEUX | 1.23 | -1.03 |
| 3 | AQEU | 0.93 | -0.20 |
| 4 | BATE | 0.89 | +0.13 |
| 5 | TQEX | 0.27 | -0.26 |
| 6 | CHIX | 0.00 | +0.00 |
| 7 | TRQX | 0.00 | +0.00 |
| 8 | AQXE | 0.00 | +0.00 |

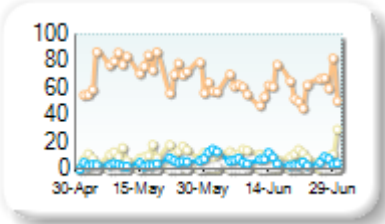
Best Prices Trend



25k EUR deal

| Rank | Venue | Best Price (%) | Change |
|------|-------|----------------|--------|
| 1 | XMAD | 60.20 | -12.23 |
| 2 | CEUX | 10.97 | +0.48 |
| 3 | AQEU | 6.54 | +2.04 |
| 4 | TQEX | 0.90 | +0.26 |
| 5 | BATE | 0.35 | +0.32 |
| 6 | CHIX | 0.00 | +0.00 |
| 7 | TRQX | 0.00 | +0.00 |
| 8 | AQXE | 0.00 | +0.00 |

Best Prices Trend

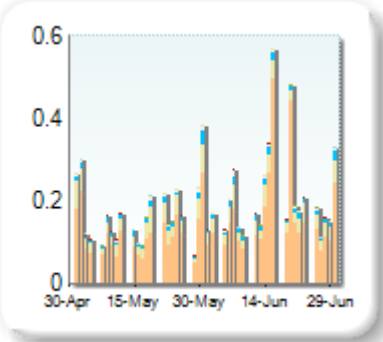


Best Price % measures how often each venue posts an absolute best price (no ties) for stocks. The result is averaged over the stocks in the index and is based on measurements of the order book every 5 seconds.

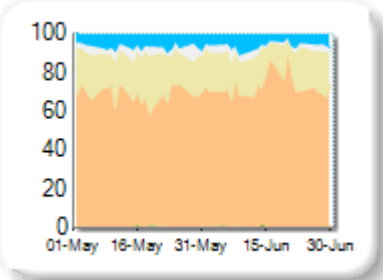
Market Share

| Rank | Venue | Market Share | Change |
|------|-------|--------------|--------|
| 1 | XMAD | 75.19% | +6.36 |
| 2 | CEUX | 16.23% | -4.37 |
| 3 | AQEU | 5.32% | -1.13 |
| 4 | TQEX | 2.58% | -0.94 |
| 5 | BATE | 0.62% | +0.22 |
| 6 | CHIX | 0.02% | -0.09 |
| 7 | AQXE | 0.02% | +0.01 |
| 8 | TRQX | 0.02% | -0.06 |

Volume Trend



Market Share Trend



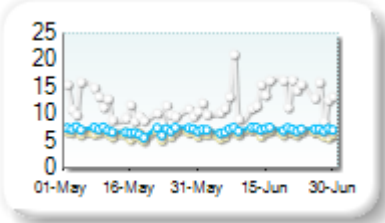
Market share is based on on-book value traded during continuous trading. The share is calculated by averaging over all stocks in the index. The current value shown is for last week and the change is relative to the previous week.

Spreads

At touch

| Rank | Venue | Spread (bps) | Change |
|------|-------|--------------|---------|
| 1 | CEUX | 6.43 | +0.18 |
| 2 | XMAD | 6.75 | 0.00 |
| 3 | AQEU | 7.15 | +0.16 |
| 4 | TQEX | 13.27 | +2.25 |
| 5 | BATE | 194.04 | -170.51 |

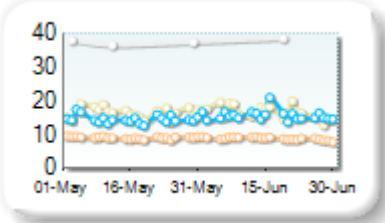
Monthly Spread Trend



25k EUR deal

| Rank | Venue | Spread (bps) | Change |
|------|-------|--------------|--------|
| 1 | XMAD | 8.79 | -0.24 |
| 2 | AQEU | 15.56 | +1.08 |
| 3 | CEUX | 16.57 | +0.15 |
| 4 | TQEX | 54.38 | +3.84 |
| 5 | BATE | 167.24 | n/a |

Monthly Spread Trend



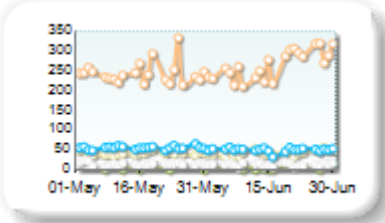
Spreads measure the bid to offer spread of the best visible orders in the book. The result is averaged over the stocks in the index and is based on measurements of the order books every 30 seconds. The value for the spread is quoted in basis points (0.01%).

Book Depths

10BPS Depth (top of book)

| Rank | Venue | Depth (1K EUR) | Change |
|------|-------|----------------|--------|
| 1 | XMAD | 265.5 | +21.8 |
| 2 | AQEU | 49.5 | -2.7 |
| 3 | CEUX | 42.1 | +0.6 |
| 4 | TQEX | 11.3 | -1.6 |
| 5 | BATE | 0.7 | +0.2 |

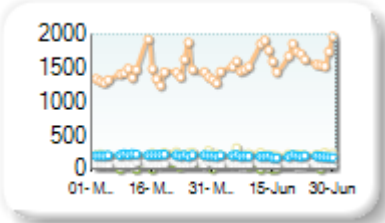
Monthly Depth Trend



50BPS Depth (deeper into book)

| Rank | Venue | Depth (1K EUR) | Change |
|------|-------|----------------|--------|
| 1 | XMAD | 1,620.9 | +183.1 |
| 2 | CEUX | 222.0 | +3.4 |
| 3 | AQEU | 190.8 | -8.5 |
| 4 | TQEX | 61.0 | -14.9 |
| 5 | BATE | 9.5 | +5.2 |
| 6 | CHIX | 6.2 | -2.3 |

Monthly Depth Trend



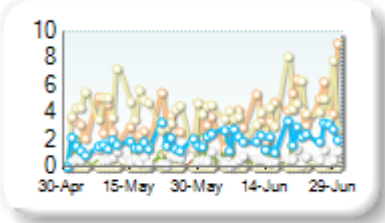
Market depth measures the amount of visible liquidity (bids and offers) in the order book within 10 or 50 BPS of mid price. The result is averaged over the stocks in the index and is based on measurements of the order book every 30 seconds. This is quoted in '000s of EUR.

Best Prices

At touch

| Rank | Venue | Best Price (%) | Change |
|------|-------|----------------|--------|
| 1 | CEUX | 4.24 | -0.62 |
| 2 | XMAD | 4.18 | +0.80 |
| 3 | AQEU | 2.25 | +0.74 |
| 4 | TQEX | 0.61 | -0.16 |
| 5 | BATE | 0.52 | +0.35 |
| 6 | CHIX | 0.00 | -0.01 |
| 7 | TRQX | 0.00 | +0.00 |
| 8 | AQXE | 0.00 | +0.00 |

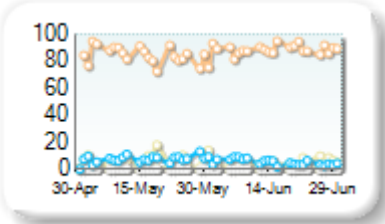
Best Prices Trend



25k EUR deal

| Rank | Venue | Best Price (%) | Change |
|------|-------|----------------|--------|
| 1 | XMAD | 88.53 | +4.44 |
| 2 | AQEU | 5.23 | -2.15 |
| 3 | CEUX | 4.78 | -1.32 |
| 4 | TQEX | 0.07 | -0.03 |
| 5 | BATE | 0.00 | -0.03 |
| 6 | CHIX | 0.00 | +0.00 |
| 7 | TRQX | 0.00 | +0.00 |
| 8 | AQXE | 0.00 | +0.00 |

Best Prices Trend

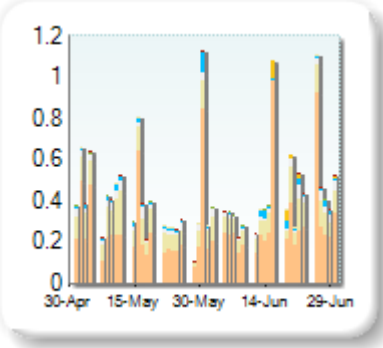


Best Price % measures how often each venue posts an absolute best price (no ties) for stocks. The result is averaged over the stocks in the index and is based on measurements of the order book every 5 seconds.

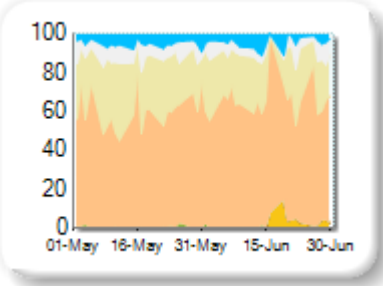
Market Share

| Rank | Venue | Market Share | Change |
|------|-------|--------------|--------|
| 1 | XMAD | 67.07% | +4.95 |
| 2 | CEUX | 20.49% | -4.59 |
| 3 | TQEX | 5.51% | -1.19 |
| 4 | AQEU | 3.95% | -1.50 |
| 5 | ENXT | 2.68% | +2.68 |
| 6 | BATE | 0.29% | -0.26 |
| 7 | CHIX | 0.01% | -0.09 |
| 8 | AQXE | 0.00% | 0.00 |

Volume Trend



Market Share Trend



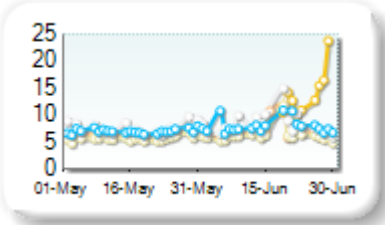
Market share is based on on-book value traded during continuous trading. The share is calculated by averaging over all stocks in the index. The current value shown is for last week and the change is relative to the previous week.

Spreads

At touch

| Rank | Venue | Spread (bps) | Change |
|------|-------|--------------|--------|
| 1 | CEUX | 6.28 | +0.56 |
| 2 | XMAD | 6.84 | +0.37 |
| 3 | AQEU | 7.96 | +0.94 |
| 4 | TQEX | 8.30 | +0.79 |
| 5 | ENXT | 15.97 | n/a |
| 6 | BATE | 80.06 | +10.27 |

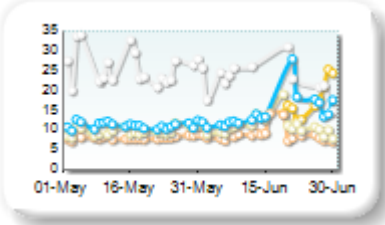
Monthly Spread Trend



25k EUR deal

| Rank | Venue | Spread (bps) | Change |
|------|-------|--------------|--------|
| 1 | XMAD | 8.79 | +0.76 |
| 2 | CEUX | 11.01 | +1.31 |
| 3 | AQEU | 14.41 | +3.26 |
| 4 | ENXT | 17.52 | n/a |
| 5 | TQEX | 28.61 | +0.54 |
| 6 | BATE | 147.26 | +7.55 |

Monthly Spread Trend



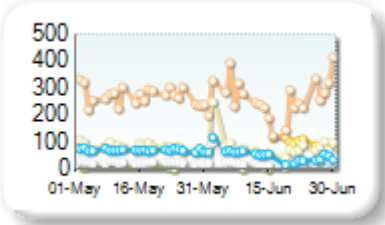
Spreads measure the bid to offer spread of the best visible orders in the book. The result is averaged over the stocks in the index and is based on measurements of the order books every 30 seconds. The value for the spread is quoted in basis points (0.01%).

Book Depths

10BPS Depth (top of book)

| Rank | Venue | Depth (1K EUR) | Change |
|------|-------|----------------|--------|
| 1 | XMAD | 263.9 | -7.5 |
| 2 | ENXT | 95.8 | +0.0 |
| 3 | CEUX | 82.4 | -4.6 |
| 4 | AQEU | 50.9 | -17.4 |
| 5 | TQEX | 27.3 | +1.8 |
| 6 | BATE | 3.8 | +0.1 |

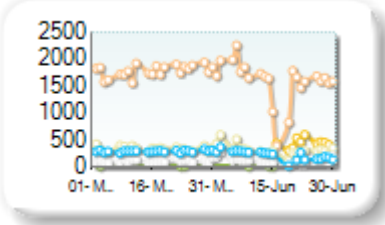
Monthly Depth Trend



50BPS Depth (deeper into book)

| Rank | Venue | Depth (1K EUR) | Change |
|------|-------|----------------|--------|
| 1 | XMAD | 1,589.8 | -188.7 |
| 2 | ENXT | 435.5 | +0.0 |
| 3 | CEUX | 321.7 | -33.6 |
| 4 | AQEU | 218.0 | -64.0 |
| 5 | TQEX | 113.1 | +2.3 |
| 6 | BATE | 13.8 | -5.4 |
| 7 | CHIX | 12.0 | +0.6 |

Monthly Depth Trend



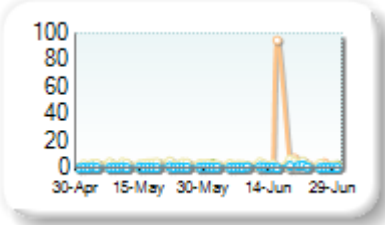
Market depth measures the amount of visible liquidity (bids and offers) in the order book within 10 or 50 BPS of mid price. The result is averaged over the stocks in the index and is based on measurements of the order book every 30 seconds. This is quoted in '000s of EUR.

Best Prices

At touch

| Rank | Venue | Best Price (%) | Change |
|------|-------|----------------|--------|
| 1 | XMAD | 6.29 | +5.31 |
| 2 | CEUX | 2.87 | +0.03 |
| 3 | AQEU | 0.75 | -0.01 |
| 4 | BATE | 0.60 | +0.28 |
| 5 | TQEX | 0.46 | -0.05 |
| 6 | CHIX | 0.00 | +0.00 |
| 7 | AQXE | 0.00 | +0.00 |

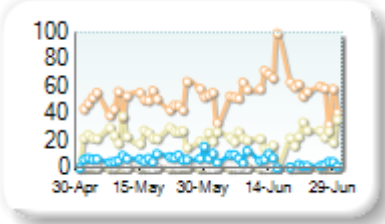
Best Prices Trend



25k EUR deal

| Rank | Venue | Best Price (%) | Change |
|------|-------|----------------|--------|
| 1 | XMAD | 57.81 | +8.07 |
| 2 | CEUX | 21.80 | -1.17 |
| 3 | AQEU | 5.13 | -1.70 |
| 4 | TQEX | 0.85 | -0.60 |
| 5 | BATE | 0.05 | +0.03 |
| 6 | CHIX | 0.00 | +0.00 |
| 7 | AQXE | 0.00 | +0.00 |

Best Prices Trend

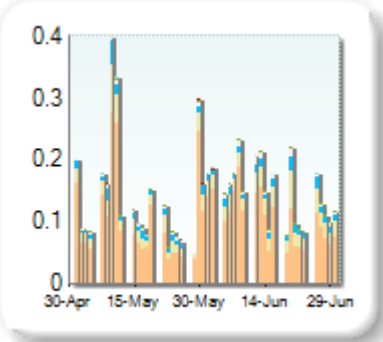


Best Price % measures how often each venue posts an absolute best price (no ties) for stocks. The result is averaged over the stocks in the index and is based on measurements of the order book every 5 seconds.

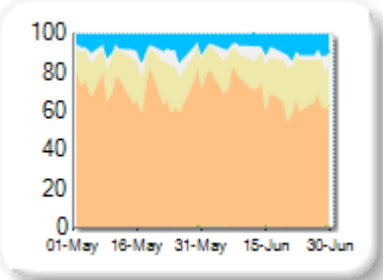
Market Share

| Rank | Venue | Market Share | Change |
|------|-------|--------------|--------|
| 1 | XMAD | 69.80% | -2.75 |
| 2 | CEUX | 17.81% | +1.86 |
| 3 | AQEU | 7.58% | +0.03 |
| 4 | TQEX | 4.14% | +0.74 |
| 5 | BATE | 0.62% | +0.23 |
| 6 | TRQX | 0.03% | -0.01 |
| 7 | CHIX | 0.01% | -0.09 |
| 8 | AQXE | 0.00% | 0.00 |

Volume Trend



Market Share Trend



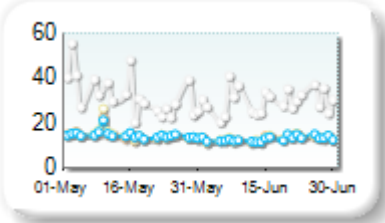
Market share is based on on-book value traded during continuous trading. The share is calculated by averaging over all stocks in the index. The current value shown is for last week and the change is relative to the previous week.

Spreads

At touch

| Rank | Venue | Spread (bps) | Change |
|------|-------|--------------|--------|
| 1 | XMAD | 13.05 | -1.47 |
| 2 | AQEU | 13.08 | -1.68 |
| 3 | CEUX | 13.14 | -1.78 |
| 4 | TQEX | 29.80 | -5.70 |
| 5 | BATE | 119.38 | n/a |

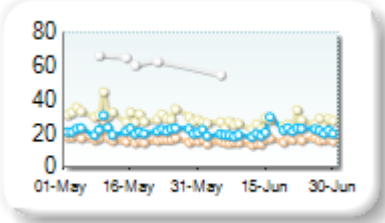
Monthly Spread Trend



25k EUR deal

| Rank | Venue | Spread (bps) | Change |
|------|-------|--------------|--------|
| 1 | XMAD | 15.81 | -1.32 |
| 2 | AQEU | 20.95 | -0.90 |
| 3 | CEUX | 26.40 | -4.62 |
| 4 | TQEX | 62.71 | -3.79 |

Monthly Spread Trend



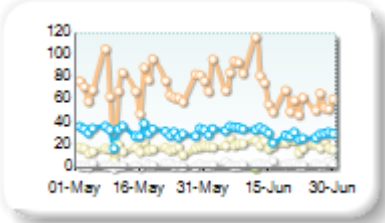
Spreads measure the bid to offer spread of the best visible orders in the book. The result is averaged over the stocks in the index and is based on measurements of the order books every 30 seconds. The value for the spread is quoted in basis points (0.01%).

Book Depths

10BPS Depth (top of book)

| Rank | Venue | Depth (1K EUR) | Change |
|------|-------|----------------|--------|
| 1 | XMAD | 70.3 | -1.1 |
| 2 | AQEU | 31.5 | +0.5 |
| 3 | CEUX | 20.9 | +4.0 |
| 4 | TQEX | 3.7 | +0.9 |
| 5 | BATE | 0.4 | +0.0 |

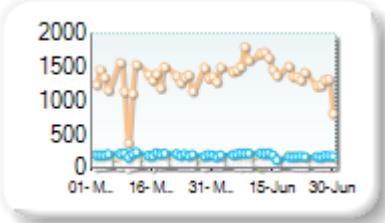
Monthly Depth Trend



50BPS Depth (deeper into book)

| Rank | Venue | Depth (1K EUR) | Change |
|------|-------|----------------|--------|
| 1 | XMAD | 1,417.1 | +131.0 |
| 2 | AQEU | 189.2 | -3.9 |
| 3 | CEUX | 156.2 | +14.9 |
| 4 | TQEX | 38.5 | -2.6 |
| 5 | BATE | 12.0 | +1.1 |

Monthly Depth Trend



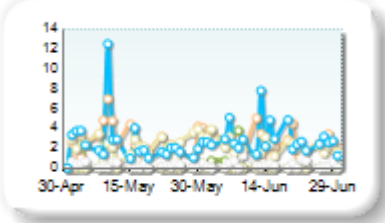
Market depth measures the amount of visible liquidity (bids and offers) in the order book within 10 or 50 BPS of mid price. The result is averaged over the stocks in the index and is based on measurements of the order book every 30 seconds. This is quoted in '000s of EUR.

Best Prices

At touch

| Rank | Venue | Best Price (%) | Change |
|------|-------|----------------|--------|
| 1 | AQEU | 2.97 | +1.01 |
| 2 | XMAD | 2.47 | -0.91 |
| 3 | CEUX | 2.12 | -0.20 |
| 4 | BATE | 0.33 | +0.48 |
| 5 | TQEX | 0.32 | +0.10 |
| 6 | CHIX | 0.00 | +0.00 |
| 7 | TRQX | 0.00 | +0.00 |
| 8 | AQXE | 0.00 | +0.00 |

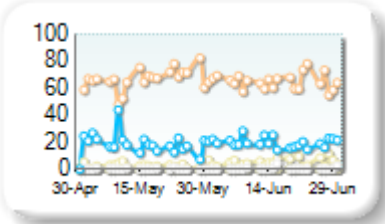
Best Prices Trend



25k EUR deal

| Rank | Venue | Best Price (%) | Change |
|------|-------|----------------|--------|
| 1 | XMAD | 64.72 | -1.78 |
| 2 | AQEU | 19.77 | +1.15 |
| 3 | CEUX | 5.42 | +2.64 |
| 4 | TQEX | 0.54 | +0.31 |
| 5 | BATE | 0.03 | +0.03 |
| 6 | CHIX | 0.00 | +0.00 |
| 7 | TRQX | 0.00 | +0.00 |
| 8 | AQXE | 0.00 | +0.00 |

Best Prices Trend

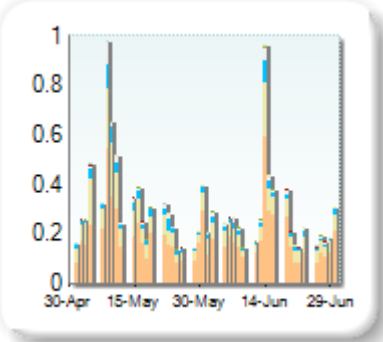


Best Price % measures how often each venue posts an absolute best price (no ties) for stocks. The result is averaged over the stocks in the index and is based on measurements of the order book every 5 seconds.

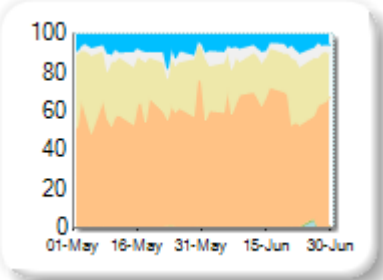
Market Share

| Rank | Venue | Market Share | Change |
|------|-------|--------------|--------|
| 1 | XMAD | 63.37% | +4.47 |
| 2 | CEUX | 23.61% | -3.64 |
| 3 | AQEU | 7.14% | -1.41 |
| 4 | TQEX | 5.29% | +0.48 |
| 5 | BATE | 0.38% | +0.02 |
| 6 | TRQX | 0.13% | +0.09 |
| 7 | CHIX | 0.07% | -0.01 |
| 8 | AQXE | 0.01% | +0.01 |

Volume Trend



Market Share Trend



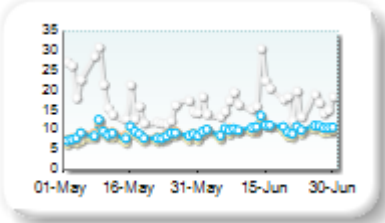
Market share is based on on-book value traded during continuous trading. The share is calculated by averaging over all stocks in the index. The current value shown is for last week and the change is relative to the previous week.

Spreads

At touch

| Rank | Venue | Spread (bps) | Change |
|------|-------|--------------|--------|
| 1 | CEUX | 9.72 | +1.68 |
| 2 | XMAD | 10.05 | +1.11 |
| 3 | AQEU | 10.45 | +1.62 |
| 4 | TQEX | 17.55 | -0.27 |
| 5 | BATE | 184.82 | +41.64 |

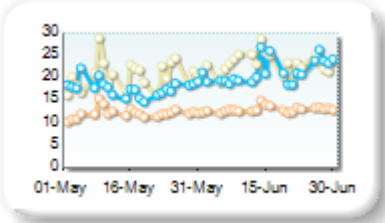
Monthly Spread Trend



25k EUR deal

| Rank | Venue | Spread (bps) | Change |
|------|-------|--------------|--------|
| 1 | XMAD | 13.11 | +0.85 |
| 2 | AQEU | 21.44 | +3.67 |
| 3 | CEUX | 23.15 | +2.40 |
| 4 | TQEX | 82.56 | +6.61 |
| 5 | BATE | 220.46 | n/a |

Monthly Spread Trend



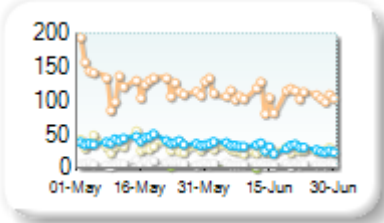
Spreads measure the bid to offer spread of the best visible orders in the book. The result is averaged over the stocks in the index and is based on measurements of the order books every 30 seconds. The value for the spread is quoted in basis points (0.01%).

Book Depths

10BPS Depth (top of book)

| Rank | Venue | Depth (1K EUR) | Change |
|------|-------|----------------|--------|
| 1 | XMAD | 107.7 | -17.8 |
| 2 | AQEU | 30.9 | -7.0 |
| 3 | CEUX | 26.6 | -6.1 |
| 4 | TQEX | 5.9 | -1.5 |
| 5 | BATE | 0.2 | -0.2 |

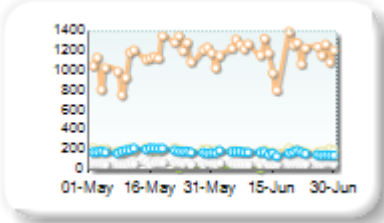
Monthly Depth Trend



50BPS Depth (deeper into book)

| Rank | Venue | Depth (1K EUR) | Change |
|------|-------|----------------|--------|
| 1 | XMAD | 1,188.4 | +60.1 |
| 2 | CEUX | 186.5 | -7.8 |
| 3 | AQEU | 163.2 | -15.2 |
| 4 | TQEX | 55.9 | -4.5 |
| 5 | BATE | 5.0 | -3.5 |

Monthly Depth Trend



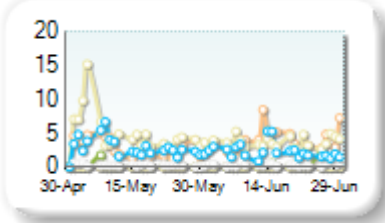
Market depth measures the amount of visible liquidity (bids and offers) in the order book within 10 or 50 BPS of mid price. The result is averaged over the stocks in the index and is based on measurements of the order book every 30 seconds. This is quoted in '000s of EUR.

Best Prices

At touch

| Rank | Venue | Best Price (%) | Change |
|------|-------|----------------|--------|
| 1 | XMAD | 3.82 | +1.91 |
| 2 | CEUX | 3.61 | -1.00 |
| 3 | AQEU | 2.31 | -0.41 |
| 4 | TQEX | 0.35 | +0.04 |
| 5 | BATE | 0.24 | +0.19 |
| 6 | CHIX | 0.00 | +0.00 |
| 7 | TRQX | 0.00 | +0.00 |
| 8 | AQXE | 0.00 | +0.00 |

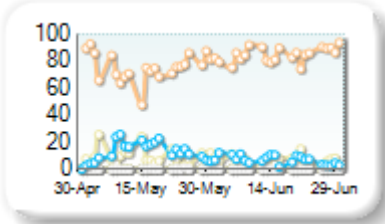
Best Prices Trend



25k EUR deal

| Rank | Venue | Best Price (%) | Change |
|------|-------|----------------|--------|
| 1 | XMAD | 84.54 | +9.20 |
| 2 | AQEU | 6.98 | -5.98 |
| 3 | CEUX | 6.44 | -2.54 |
| 4 | TQEX | 0.04 | -0.10 |
| 5 | CHIX | 0.00 | +0.00 |
| 6 | TRQX | 0.00 | +0.00 |
| 7 | BATE | 0.00 | +0.00 |
| 8 | AQXE | 0.00 | +0.00 |

Best Prices Trend

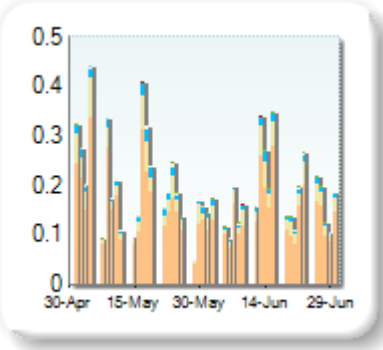


Best Price % measures how often each venue posts an absolute best price (no ties) for stocks. The result is averaged over the stocks in the index and is based on measurements of the order book every 5 seconds.

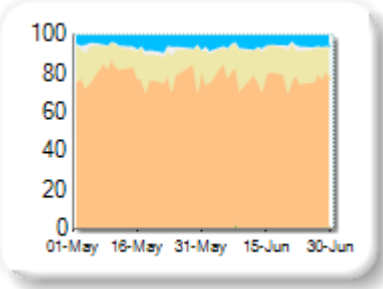
Market Share

| Rank | Venue | Market Share | Change |
|------|-------|--------------|--------|
| 1 | XMAD | 77.08% | -0.52 |
| 2 | CEUX | 15.79% | +0.81 |
| 3 | AQEU | 5.60% | +0.10 |
| 4 | TQEX | 1.35% | -0.45 |
| 5 | BATE | 0.16% | +0.10 |
| 6 | TRQX | 0.02% | 0.00 |
| 7 | CHIX | 0.01% | -0.04 |

Volume Trend



Market Share Trend



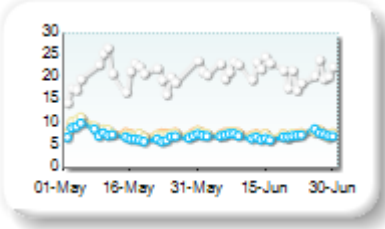
Market share is based on on-book value traded during continuous trading. The share is calculated by averaging over all stocks in the index. The current value shown is for last week and the change is relative to the previous week.

Spreads

At touch

| Rank | Venue | Spread (bps) | Change |
|------|-------|--------------|---------|
| 1 | AQEU | 7.16 | -0.07 |
| 2 | CEUX | 7.51 | -0.67 |
| 3 | XMAD | 7.64 | -0.52 |
| 4 | TQEX | 21.43 | -3.76 |
| 5 | BATE | 467.12 | +266.80 |

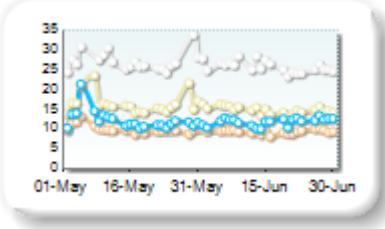
Monthly Spread Trend



25k EUR deal

| Rank | Venue | Spread (bps) | Change |
|------|-------|--------------|--------|
| 1 | XMAD | 9.37 | -0.59 |
| 2 | AQEU | 11.83 | -0.38 |
| 3 | CEUX | 14.82 | -1.57 |
| 4 | TQEX | 25.81 | -5.14 |

Monthly Spread Trend



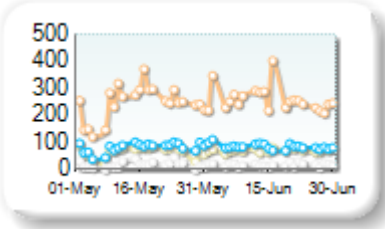
Spreads measure the bid to offer spread of the best visible orders in the book. The result is averaged over the stocks in the index and is based on measurements of the order books every 30 seconds. The value for the spread is quoted in basis points (0.01%).

Book Depths

10BPS Depth (top of book)

| Rank | Venue | Depth (1K EUR) | Change |
|------|-------|----------------|--------|
| 1 | XMAD | 257.4 | +11.2 |
| 2 | AQEU | 83.8 | +6.2 |
| 3 | CEUX | 70.8 | +4.6 |
| 4 | TQEX | 16.6 | -0.8 |
| 5 | BATE | 0.5 | -0.1 |
| 6 | TRQX | 0.1 | +0.0 |

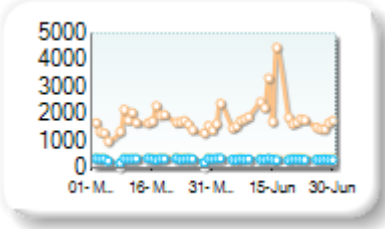
Monthly Depth Trend



50BPS Depth (deeper into book)

| Rank | Venue | Depth (1K EUR) | Change |
|------|-------|----------------|--------|
| 1 | XMAD | 1,970.5 | +311.5 |
| 2 | CEUX | 366.4 | +2.8 |
| 3 | AQEU | 328.7 | +12.9 |
| 4 | TQEX | 271.9 | +0.3 |
| 5 | BATE | 3.2 | -1.1 |
| 6 | TRQX | 1.1 | +0.1 |

Monthly Depth Trend



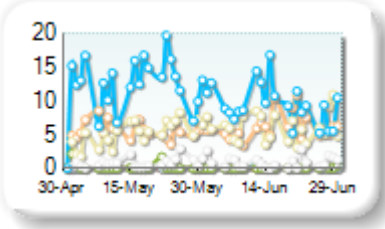
Market depth measures the amount of visible liquidity (bids and offers) in the order book within 10 or 50 BPS of mid price. The result is averaged over the stocks in the index and is based on measurements of the order book every 30 seconds. This is quoted in '000s of EUR.

Best Prices

At touch

| Rank | Venue | Best Price (%) | Change |
|------|-------|----------------|--------|
| 1 | AQEU | 9.47 | -1.74 |
| 2 | XMAD | 6.08 | -0.98 |
| 3 | CEUX | 6.03 | +0.66 |
| 4 | TQEX | 0.94 | -0.09 |
| 5 | BATE | 0.07 | -0.13 |
| 6 | TRQX | 0.03 | +0.05 |
| 7 | CHIX | 0.00 | +0.00 |

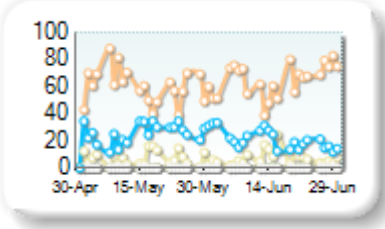
Best Prices Trend



25k EUR deal

| Rank | Venue | Best Price (%) | Change |
|------|-------|----------------|--------|
| 1 | XMAD | 64.91 | +4.74 |
| 2 | AQEU | 20.48 | -4.46 |
| 3 | CEUX | 7.55 | +0.69 |
| 4 | TQEX | 0.03 | -0.06 |
| 5 | BATE | 0.00 | +0.00 |
| 6 | CHIX | 0.00 | +0.00 |
| 7 | TRQX | 0.00 | +0.00 |

Best Prices Trend

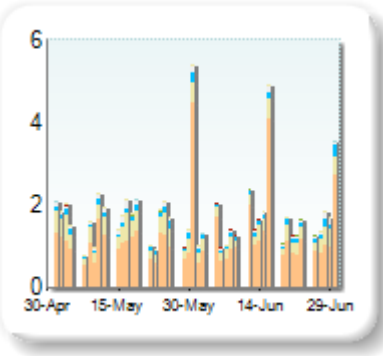


Best Price % measures how often each venue posts an absolute best price (no ties) for stocks. The result is averaged over the stocks in the index and is based on measurements of the order book every 5 seconds.

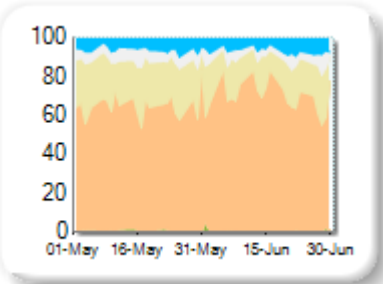
Market Share

| Rank | Venue | Market Share | Change |
|------|-------|--------------|--------|
| 1 | XMAD | 71.19% | +5.27 |
| 2 | CEUX | 17.05% | -4.61 |
| 3 | AQEU | 6.42% | +0.42 |
| 4 | TQEX | 4.80% | -1.00 |
| 5 | BATE | 0.51% | +0.05 |
| 6 | TRQX | 0.02% | -0.03 |
| 7 | AQXE | 0.00% | 0.00 |
| 8 | CHIX | 0.00% | -0.08 |

Volume Trend



Market Share Trend



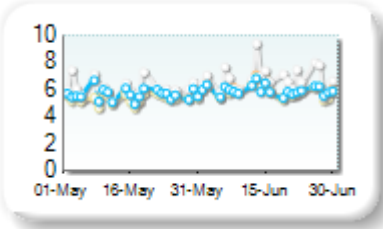
Market share is based on on-book value traded during continuous trading. The share is calculated by averaging over all stocks in the index. The current value shown is for last week and the change is relative to the previous week.

Spreads

At touch

| Rank | Venue | Spread (bps) | Change |
|------|-------|--------------|---------|
| 1 | CEUX | 5.87 | +0.55 |
| 2 | AQEU | 5.93 | +0.31 |
| 3 | XMAD | 5.98 | +0.49 |
| 4 | TQEX | 6.81 | +0.73 |
| 5 | BATE | 260.11 | +75.01 |
| 6 | CHIX | 408.44 | +339.99 |
| 7 | TRQX | 501.00 | n/a |
| 8 | AQXE | 501.00 | +0.00 |

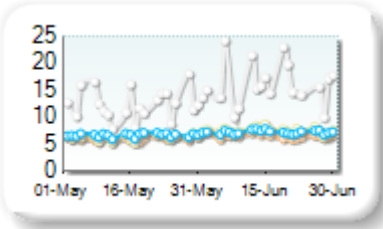
Monthly Spread Trend



25k EUR deal

| Rank | Venue | Spread (bps) | Change |
|------|-------|--------------|--------|
| 1 | XMAD | 6.57 | +0.53 |
| 2 | AQEU | 7.24 | +0.57 |
| 3 | CEUX | 7.55 | +1.24 |
| 4 | TQEX | 17.72 | +4.46 |
| 5 | BATE | 347.42 | +48.39 |

Monthly Spread Trend



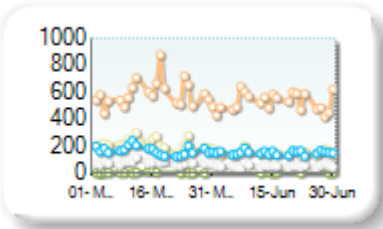
Spreads measure the bid to offer spread of the best visible orders in the book. The result is averaged over the stocks in the index and is based on measurements of the order books every 30 seconds. The value for the spread is quoted in basis points (0.01%).

Book Depths

10BPS Depth (top of book)

| Rank | Venue | Depth (1K EUR) | Change |
|------|-------|----------------|--------|
| 1 | XMAD | 527.2 | -58.0 |
| 2 | AQEU | 152.3 | -8.4 |
| 3 | CEUX | 151.3 | -61.8 |
| 4 | TQEX | 55.1 | -27.2 |
| 5 | BATE | 1.7 | -3.2 |
| 6 | CHIX | 0.0 | 0.0 |

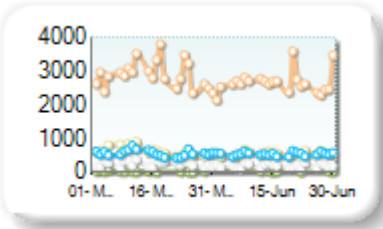
Monthly Depth Trend



50BPS Depth (deeper into book)

| Rank | Venue | Depth (1K EUR) | Change |
|------|-------|----------------|--------|
| 1 | XMAD | 2,650.5 | -233.9 |
| 2 | CEUX | 549.4 | -82.0 |
| 3 | AQEU | 544.5 | -1.6 |
| 4 | TQEX | 188.0 | -61.4 |
| 5 | BATE | 9.4 | -13.7 |
| 6 | CHIX | 9.2 | -4.9 |

Monthly Depth Trend



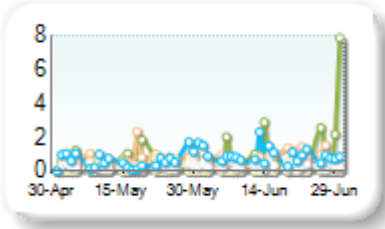
Market depth measures the amount of visible liquidity (bids and offers) in the order book within 10 or 50 BPS of mid price. The result is averaged over the stocks in the index and is based on measurements of the order book every 30 seconds. This is quoted in '000s of EUR.

Best Prices

At touch

| Rank | Venue | Best Price (%) | Change |
|------|-------|----------------|--------|
| 1 | BATE | 0.98 | -0.17 |
| 2 | AQEU | 0.91 | +0.39 |
| 3 | XMAD | 0.81 | +0.24 |
| 4 | CEUX | 0.51 | +0.03 |
| 5 | TQEX | 0.29 | +0.11 |
| 6 | CHIX | 0.01 | +0.00 |
| 7 | TRQX | 0.00 | +0.00 |
| 8 | AQXE | 0.00 | +0.00 |

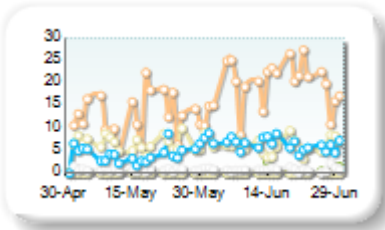
Best Prices Trend



25k EUR deal

| Rank | Venue | Best Price (%) | Change |
|------|-------|----------------|--------|
| 1 | XMAD | 19.67 | +6.99 |
| 2 | AQEU | 6.47 | +2.22 |
| 3 | CEUX | 6.15 | -0.23 |
| 4 | TQEX | 0.86 | +0.02 |
| 5 | BATE | 0.31 | +0.19 |
| 6 | CHIX | 0.00 | 0.00 |
| 7 | TRQX | 0.00 | +0.00 |
| 8 | AQXE | 0.00 | +0.00 |

Best Prices Trend

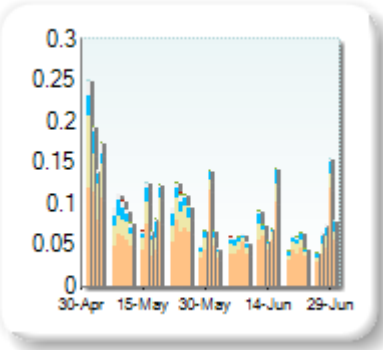


Best Price % measures how often each venue posts an absolute best price (no ties) for stocks. The result is averaged over the stocks in the index and is based on measurements of the order book every 5 seconds.

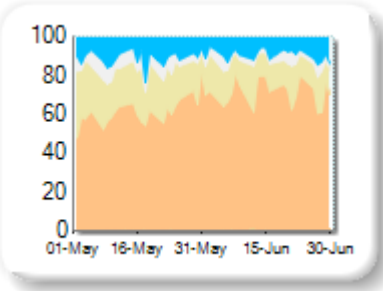
Market Share

| Rank | Venue | Market Share | Change |
|------|-------|--------------|--------|
| 1 | XMAD | 70.96% | +10.98 |
| 2 | CEUX | 15.22% | -7.66 |
| 3 | AQEU | 9.79% | -1.35 |
| 4 | TQEX | 3.70% | -2.08 |
| 5 | BATE | 0.26% | +0.10 |
| 6 | TRQX | 0.05% | +0.01 |
| 7 | CHIX | 0.01% | -0.01 |

Volume Trend



Market Share Trend



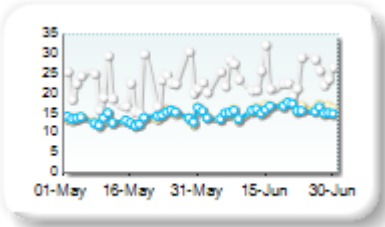
Market share is based on on-book value traded during continuous trading. The share is calculated by averaging over all stocks in the index. The current value shown is for last week and the change is relative to the previous week.

Spreads

At touch

| Rank | Venue | Spread (bps) | Change |
|------|-------|--------------|--------|
| 1 | XMAD | 15.35 | +1.62 |
| 2 | AQEU | 15.55 | +1.76 |
| 3 | CEUX | 15.94 | +2.35 |
| 4 | TQEX | 24.36 | +2.38 |

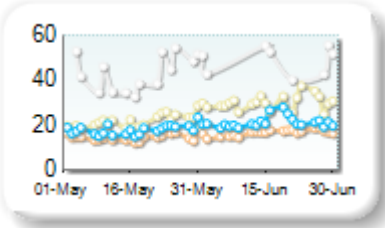
Monthly Spread Trend



25k EUR deal

| Rank | Venue | Spread (bps) | Change |
|------|-------|--------------|--------|
| 1 | XMAD | 16.73 | +1.98 |
| 2 | AQEU | 21.22 | +3.34 |
| 3 | CEUX | 29.78 | +7.97 |
| 4 | TQEX | 48.84 | +5.70 |

Monthly Spread Trend



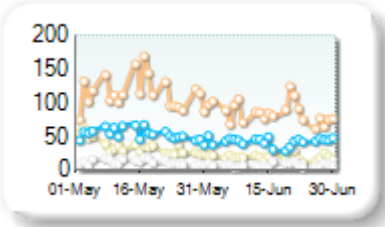
Spreads measure the bid to offer spread of the best visible orders in the book. The result is averaged over the stocks in the index and is based on measurements of the order books every 30 seconds. The value for the spread is quoted in basis points (0.01%).

Book Depths

10BPS Depth (top of book)

| Rank | Venue | Depth (1K EUR) | Change |
|------|-------|----------------|--------|
| 1 | XMAD | 85.6 | -28.3 |
| 2 | AQEU | 42.7 | -8.5 |
| 3 | CEUX | 20.4 | -14.2 |
| 4 | TQEX | 7.7 | -4.3 |
| 5 | BATE | 0.2 | -0.3 |

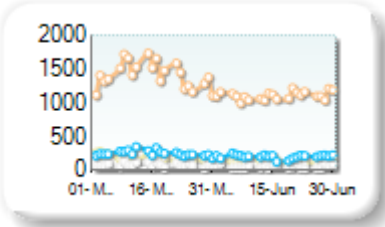
Monthly Depth Trend



50BPS Depth (deeper into book)

| Rank | Venue | Depth (1K EUR) | Change |
|------|-------|----------------|--------|
| 1 | XMAD | 1,102.4 | -307.3 |
| 2 | AQEU | 203.6 | -36.1 |
| 3 | CEUX | 137.8 | -43.0 |
| 4 | TQEX | 54.4 | -24.8 |
| 5 | BATE | 9.3 | +0.6 |

Monthly Depth Trend



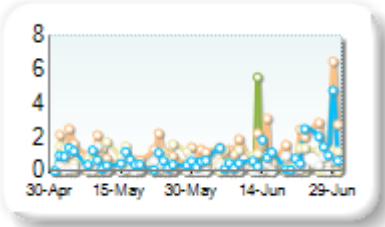
Market depth measures the amount of visible liquidity (bids and offers) in the order book within 10 or 50 BPS of mid price. The result is averaged over the stocks in the index and is based on measurements of the order book every 30 seconds. This is quoted in '000s of EUR.

Best Prices

At touch

| Rank | Venue | Best Price (%) | Change |
|------|-------|----------------|--------|
| 1 | XMAD | 1.71 | -0.33 |
| 2 | AQEU | 0.99 | +0.48 |
| 3 | CEUX | 0.82 | -0.09 |
| 4 | BATE | 0.27 | +0.51 |
| 5 | TQEX | 0.23 | +0.07 |
| 6 | CHIX | 0.00 | +0.00 |
| 7 | TRQX | 0.00 | +0.00 |
| 8 | AQXE | 0.00 | +0.00 |

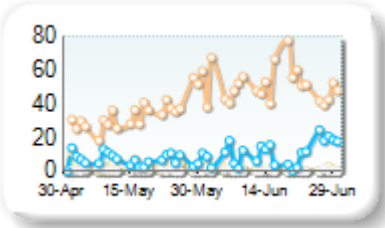
Best Prices Trend



25k EUR deal

| Rank | Venue | Best Price (%) | Change |
|------|-------|----------------|--------|
| 1 | XMAD | 50.61 | +15.57 |
| 2 | AQEU | 10.97 | +3.96 |
| 3 | CEUX | 1.03 | -2.23 |
| 4 | TQEX | 0.38 | -0.26 |
| 5 | BATE | 0.00 | +0.00 |
| 6 | CHIX | 0.00 | +0.00 |
| 7 | TRQX | 0.00 | +0.00 |
| 8 | AQXE | 0.00 | +0.00 |

Best Prices Trend

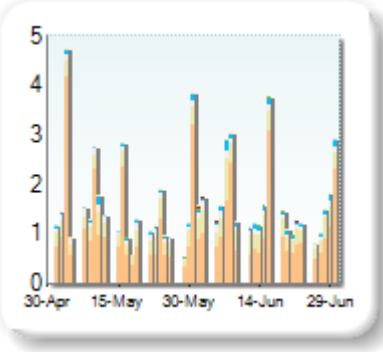


Best Price % measures how often each venue posts an absolute best price (no ties) for stocks. The result is averaged over the stocks in the index and is based on measurements of the order book every 5 seconds.

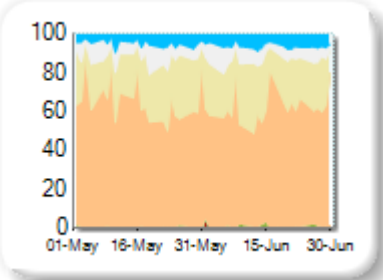
Market Share

| Rank | Venue | Market Share | Change |
|------|-------|--------------|--------|
| 1 | XMAD | 63.93% | -6.51 |
| 2 | CEUX | 22.59% | +4.14 |
| 3 | TQEX | 6.30% | +0.17 |
| 4 | AQEU | 6.10% | +1.68 |
| 5 | BATE | 0.83% | +0.42 |
| 6 | CHIX | 0.21% | +0.13 |
| 7 | TRQX | 0.03% | -0.04 |
| 8 | AQXE | 0.01% | +0.00 |

Volume Trend



Market Share Trend



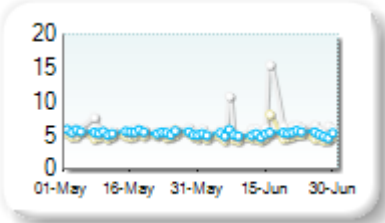
Market share is based on on-book value traded during continuous trading. The share is calculated by averaging over all stocks in the index. The current value shown is for last week and the change is relative to the previous week.

Spreads

At touch

| Rank | Venue | Spread (bps) | Change |
|------|-------|--------------|--------|
| 1 | CEUX | 4.76 | -0.14 |
| 2 | XMAD | 5.05 | -0.28 |
| 3 | AQEU | 5.22 | -0.23 |
| 4 | TQEX | 6.49 | +0.67 |
| 5 | CHIX | 182.22 | n/a |
| 6 | BATE | 215.56 | +10.65 |

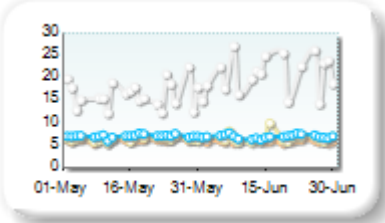
Monthly Spread Trend



25k EUR deal

| Rank | Venue | Spread (bps) | Change |
|------|-------|--------------|--------|
| 1 | XMAD | 6.06 | -0.15 |
| 2 | CEUX | 6.69 | +0.20 |
| 3 | AQEU | 7.02 | -0.12 |
| 4 | TQEX | 23.09 | +6.22 |
| 5 | CHIX | 197.78 | n/a |
| 6 | BATE | 242.75 | -27.91 |

Monthly Spread Trend



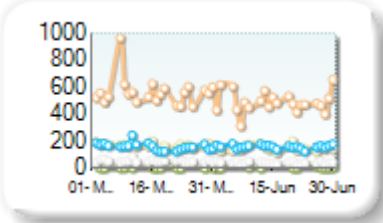
Spreads measure the bid to offer spread of the best visible orders in the book. The result is averaged over the stocks in the index and is based on measurements of the order books every 30 seconds. The value for the spread is quoted in basis points (0.01%).

Book Depths

10BPS Depth (top of book)

| Rank | Venue | Depth (1K EUR) | Change |
|------|-------|----------------|--------|
| 1 | XMAD | 488.2 | -72.8 |
| 2 | AQEU | 160.3 | +5.5 |
| 3 | CEUX | 149.7 | -18.4 |
| 4 | TQEX | 41.6 | -13.4 |
| 5 | BATE | 3.0 | +1.1 |

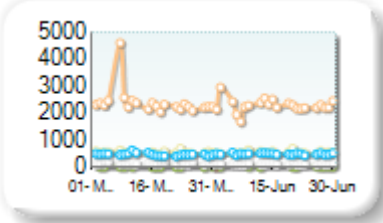
Monthly Depth Trend



50BPS Depth (deeper into book)

| Rank | Venue | Depth (1K EUR) | Change |
|------|-------|----------------|--------|
| 1 | XMAD | 2,277.9 | -107.5 |
| 2 | CEUX | 542.5 | -7.7 |
| 3 | AQEU | 494.0 | +36.4 |
| 4 | TQEX | 122.4 | -34.6 |
| 5 | BATE | 13.4 | +2.5 |
| 6 | CHIX | 9.2 | -2.4 |

Monthly Depth Trend



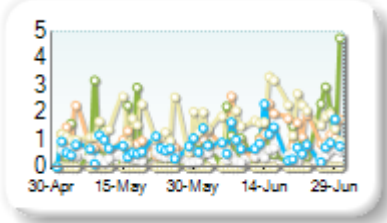
Market depth measures the amount of visible liquidity (bids and offers) in the order book within 10 or 50 BPS of mid price. The result is averaged over the stocks in the index and is based on measurements of the order book every 30 seconds. This is quoted in '000s of EUR.

Best Prices

At touch

| Rank | Venue | Best Price (%) | Change |
|------|-------|----------------|--------|
| 1 | CEUX | 1.86 | +0.76 |
| 2 | XMAD | 1.27 | +0.59 |
| 3 | BATE | 1.22 | +0.65 |
| 4 | AQEU | 0.92 | +0.11 |
| 5 | TQEX | 0.47 | +0.07 |
| 6 | CHIX | 0.00 | +0.00 |
| 7 | TRQX | 0.00 | +0.00 |
| 8 | AQXE | 0.00 | +0.00 |

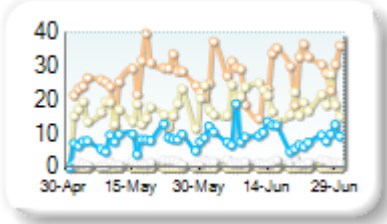
Best Prices Trend



25k EUR deal

| Rank | Venue | Best Price (%) | Change |
|------|-------|----------------|--------|
| 1 | XMAD | 28.42 | +2.21 |
| 2 | CEUX | 19.43 | +3.37 |
| 3 | AQEU | 9.49 | +1.98 |
| 4 | TQEX | 1.59 | +0.29 |
| 5 | BATE | 0.09 | +0.06 |
| 6 | CHIX | 0.00 | +0.00 |
| 7 | TRQX | 0.00 | +0.00 |
| 8 | AQXE | 0.00 | +0.00 |

Best Prices Trend

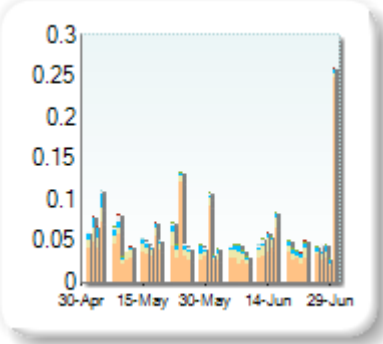


Best Price % measures how often each venue posts an absolute best price (no ties) for stocks. The result is averaged over the stocks in the index and is based on measurements of the order book every 5 seconds.

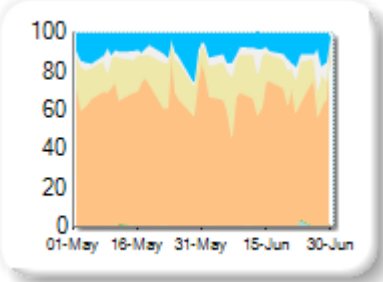
Market Share

| Rank | Venue | Market Share | Change |
|------|-------|--------------|--------|
| 1 | XMAD | 71.66% | +0.73 |
| 2 | CEUX | 14.58% | -0.59 |
| 3 | AQEU | 9.05% | -0.86 |
| 4 | TQEX | 4.30% | +0.71 |
| 5 | BATE | 0.25% | -0.01 |
| 6 | TRQX | 0.15% | +0.08 |
| 7 | CHIX | 0.01% | -0.07 |

Volume Trend



Market Share Trend



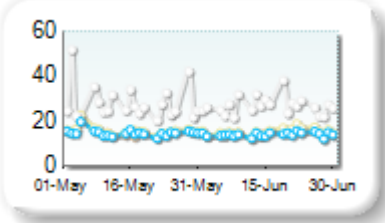
Market share is based on on-book value traded during continuous trading. The share is calculated by averaging over all stocks in the index. The current value shown is for last week and the change is relative to the previous week.

Spreads

At touch

| Rank | Venue | Spread (bps) | Change |
|------|-------|--------------|--------|
| 1 | AQEU | 14.08 | -0.65 |
| 2 | XMAD | 14.27 | -0.71 |
| 3 | CEUX | 15.24 | -0.37 |
| 4 | TQEX | 26.72 | -3.40 |
| 5 | BATE | 427.89 | n/a |

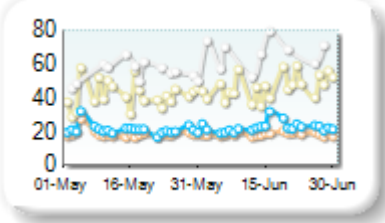
Monthly Spread Trend



25k EUR deal

| Rank | Venue | Spread (bps) | Change |
|------|-------|--------------|--------|
| 1 | XMAD | 18.44 | -0.15 |
| 2 | AQEU | 22.49 | +1.42 |
| 3 | CEUX | 46.35 | +4.79 |
| 4 | TQEX | 66.28 | +11.19 |

Monthly Spread Trend



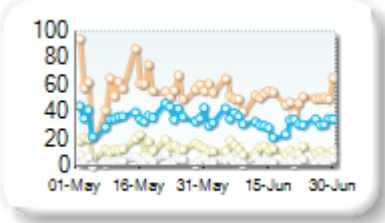
Spreads measure the bid to offer spread of the best visible orders in the book. The result is averaged over the stocks in the index and is based on measurements of the order books every 30 seconds. The value for the spread is quoted in basis points (0.01%).

Book Depths

10BPS Depth (top of book)

| Rank | Venue | Depth (1K EUR) | Change |
|------|-------|----------------|--------|
| 1 | XMAD | 51.6 | -7.8 |
| 2 | AQEU | 32.3 | -3.0 |
| 3 | CEUX | 11.7 | -3.3 |
| 4 | TQEX | 4.0 | -0.6 |
| 5 | BATE | 0.3 | -0.1 |

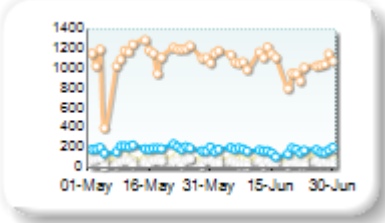
Monthly Depth Trend



50BPS Depth (deeper into book)

| Rank | Venue | Depth (1K EUR) | Change |
|------|-------|----------------|--------|
| 1 | XMAD | 1,061.9 | -53.4 |
| 2 | AQEU | 168.3 | -15.2 |
| 3 | CEUX | 84.5 | -12.7 |
| 4 | TQEX | 38.4 | -17.5 |
| 5 | BATE | 8.5 | +0.7 |

Monthly Depth Trend



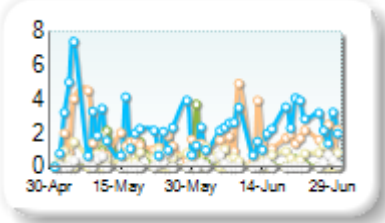
Market depth measures the amount of visible liquidity (bids and offers) in the order book within 10 or 50 BPS of mid price. The result is averaged over the stocks in the index and is based on measurements of the order book every 30 seconds. This is quoted in '000s of EUR.

Best Prices

At touch

| Rank | Venue | Best Price (%) | Change |
|------|-------|----------------|--------|
| 1 | AQEU | 2.38 | +0.37 |
| 2 | XMAD | 1.71 | +0.40 |
| 3 | CEUX | 0.63 | -0.27 |
| 4 | TQEX | 0.15 | +0.00 |
| 5 | BATE | 0.06 | -0.26 |
| 6 | CHIX | 0.00 | +0.00 |
| 7 | TRQX | 0.00 | +0.00 |
| 8 | AQXE | 0.00 | +0.00 |

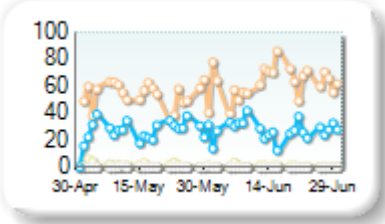
Best Prices Trend



25k EUR deal

| Rank | Venue | Best Price (%) | Change |
|------|-------|----------------|--------|
| 1 | XMAD | 63.33 | +10.22 |
| 2 | AQEU | 27.30 | +0.83 |
| 3 | CEUX | 0.88 | -0.70 |
| 4 | TQEX | 0.03 | -0.20 |
| 5 | CHIX | 0.00 | +0.00 |
| 6 | TRQX | 0.00 | +0.00 |
| 7 | BATE | 0.00 | +0.00 |
| 8 | AQXE | 0.00 | +0.00 |

Best Prices Trend

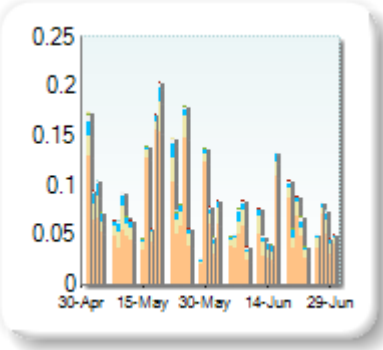


Best Price % measures how often each venue posts an absolute best price (no ties) for stocks. The result is averaged over the stocks in the index and is based on measurements of the order book every 5 seconds.

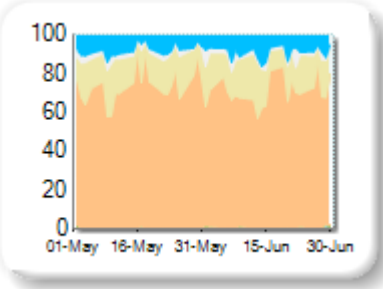
Market Share

| Rank | Venue | Market Share | Change |
|------|-------|--------------|--------|
| 1 | XMAD | 71.53% | -3.75 |
| 2 | CEUX | 16.35% | +1.86 |
| 3 | AQEU | 8.68% | +1.29 |
| 4 | TQEX | 2.92% | +0.54 |
| 5 | BATE | 0.43% | +0.11 |
| 6 | TRQX | 0.08% | -0.01 |
| 7 | CHIX | 0.02% | -0.04 |

Volume Trend



Market Share Trend



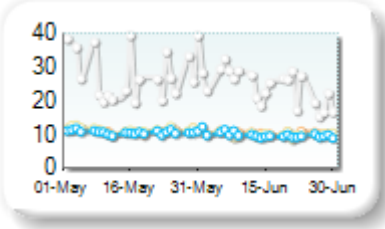
Market share is based on on-book value traded during continuous trading. The share is calculated by averaging over all stocks in the index. The current value shown is for last week and the change is relative to the previous week.

Spreads

At touch

| Rank | Venue | Spread (bps) | Change |
|------|-------|--------------|---------|
| 1 | AQEU | 9.83 | -0.80 |
| 2 | CEUX | 10.01 | -1.24 |
| 3 | XMAD | 10.27 | -0.74 |
| 4 | TQEX | 23.93 | -5.71 |
| 5 | BATE | 146.41 | -317.61 |

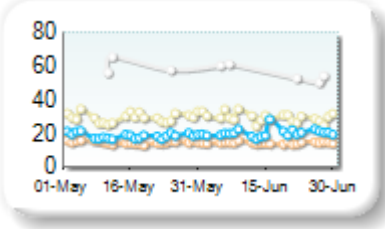
Monthly Spread Trend



25k EUR deal

| Rank | Venue | Spread (bps) | Change |
|------|-------|--------------|--------|
| 1 | XMAD | 14.48 | -0.29 |
| 2 | AQEU | 20.29 | +1.64 |
| 3 | CEUX | 29.46 | +0.06 |
| 4 | TQEX | 55.54 | -13.52 |

Monthly Spread Trend



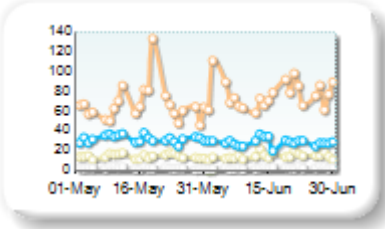
Spreads measure the bid to offer spread of the best visible orders in the book. The result is averaged over the stocks in the index and is based on measurements of the order books every 30 seconds. The value for the spread is quoted in basis points (0.01%).

Book Depths

10BPS Depth (top of book)

| Rank | Venue | Depth (1K EUR) | Change |
|------|-------|----------------|--------|
| 1 | XMAD | 76.9 | +9.9 |
| 2 | AQEU | 28.6 | -2.0 |
| 3 | CEUX | 14.5 | +0.2 |
| 4 | TQEX | 2.5 | +0.1 |
| 5 | BATE | 0.7 | -0.1 |
| 6 | CHIX | 0.0 | 0.0 |

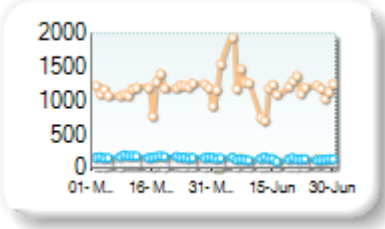
Monthly Depth Trend



50BPS Depth (deeper into book)

| Rank | Venue | Depth (1K EUR) | Change |
|------|-------|----------------|--------|
| 1 | XMAD | 1,213.3 | +60.6 |
| 2 | AQEU | 135.2 | -22.7 |
| 3 | CEUX | 131.1 | -9.3 |
| 4 | TQEX | 37.2 | -0.9 |
| 5 | BATE | 5.5 | +0.2 |
| 6 | CHIX | 1.4 | 0.0 |

Monthly Depth Trend



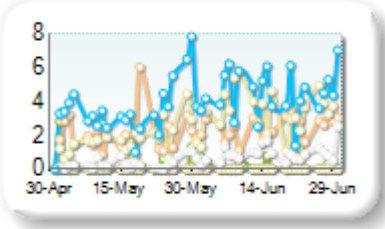
Market depth measures the amount of visible liquidity (bids and offers) in the order book within 10 or 50 BPS of mid price. The result is averaged over the stocks in the index and is based on measurements of the order book every 30 seconds. This is quoted in '000s of EUR.

Best Prices

At touch

| Rank | Venue | Best Price (%) | Change |
|------|-------|----------------|--------|
| 1 | AQEU | 4.47 | +0.83 |
| 2 | CEUX | 3.39 | +2.96 |
| 3 | XMAD | 2.49 | +1.25 |
| 4 | TQEX | 0.91 | +1.30 |
| 5 | BATE | 0.23 | -0.15 |
| 6 | CHIX | 0.00 | +0.00 |
| 7 | TRQX | 0.00 | +0.00 |
| 8 | AQXE | 0.00 | +0.00 |

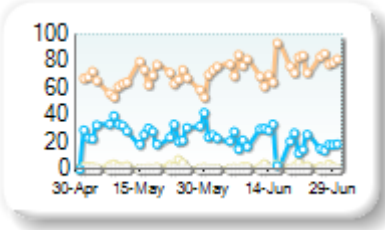
Best Prices Trend



25k EUR deal

| Rank | Venue | Best Price (%) | Change |
|------|-------|----------------|--------|
| 1 | XMAD | 76.55 | +10.44 |
| 2 | AQEU | 20.75 | -6.21 |
| 3 | CEUX | 1.63 | -0.19 |
| 4 | BATE | 0.00 | +0.00 |
| 5 | TQEX | 0.00 | -0.01 |
| 6 | CHIX | 0.00 | +0.00 |
| 7 | TRQX | 0.00 | +0.00 |
| 8 | AQXE | 0.00 | +0.00 |

Best Prices Trend

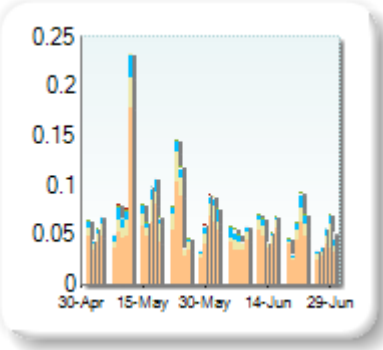


Best Price % measures how often each venue posts an absolute best price (no ties) for stocks. The result is averaged over the stocks in the index and is based on measurements of the order book every 5 seconds.

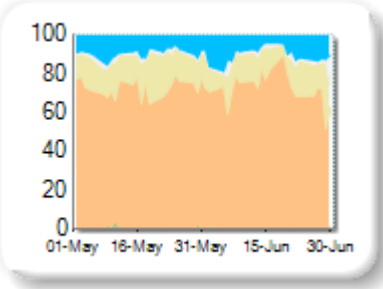
Market Share

| Rank | Venue | Market Share | Change |
|------|-------|--------------|--------|
| 1 | XMAD | 71.52% | -0.41 |
| 2 | CEUX | 15.02% | -1.10 |
| 3 | AQEU | 10.43% | +0.91 |
| 4 | TQEX | 2.77% | +0.92 |
| 5 | BATE | 0.24% | -0.09 |
| 6 | TRQX | 0.01% | -0.10 |
| 7 | AQXE | 0.00% | 0.00 |

Volume Trend



Market Share Trend



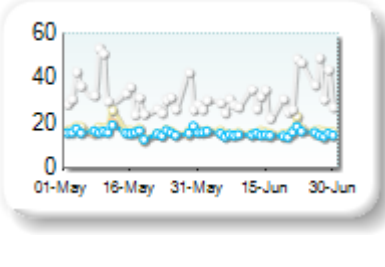
Market share is based on on-book value traded during continuous trading. The share is calculated by averaging over all stocks in the index. The current value shown is for last week and the change is relative to the previous week.

Spreads

At touch

| Rank | Venue | Spread (bps) | Change |
|------|-------|--------------|--------|
| 1 | XMAD | 15.04 | -1.00 |
| 2 | AQEU | 15.16 | -0.80 |
| 3 | CEUX | 16.43 | -0.75 |
| 4 | TQEX | 32.35 | -2.66 |

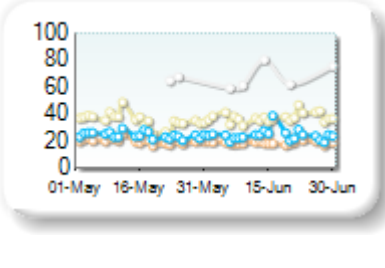
Monthly Spread Trend



25k EUR deal

| Rank | Venue | Spread (bps) | Change |
|------|-------|--------------|--------|
| 1 | XMAD | 19.04 | -1.22 |
| 2 | AQEU | 24.38 | -0.05 |
| 3 | CEUX | 37.45 | +2.26 |
| 4 | TQEX | 72.98 | +0.98 |

Monthly Spread Trend



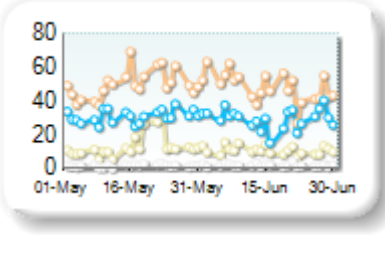
Spreads measure the bid to offer spread of the best visible orders in the book. The result is averaged over the stocks in the index and is based on measurements of the order books every 30 seconds. The value for the spread is quoted in basis points (0.01%).

Book Depths

10BPS Depth (top of book)

| Rank | Venue | Depth (1K EUR) | Change |
|------|-------|----------------|--------|
| 1 | XMAD | 47.9 | -1.7 |
| 2 | AQEU | 29.2 | -0.1 |
| 3 | CEUX | 10.7 | -2.4 |
| 4 | TQEX | 1.9 | +0.3 |
| 5 | BATE | 0.8 | +0.1 |

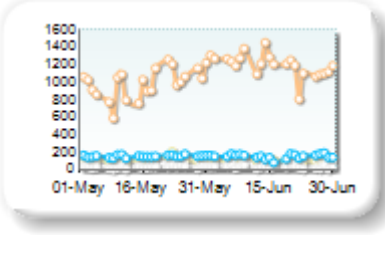
Monthly Depth Trend



50BPS Depth (deeper into book)

| Rank | Venue | Depth (1K EUR) | Change |
|------|-------|----------------|--------|
| 1 | XMAD | 1,200.8 | +202.7 |
| 2 | AQEU | 158.6 | +5.6 |
| 3 | CEUX | 120.4 | +1.2 |
| 4 | TQEX | 36.2 | +2.3 |
| 5 | BATE | 5.2 | +1.5 |

Monthly Depth Trend



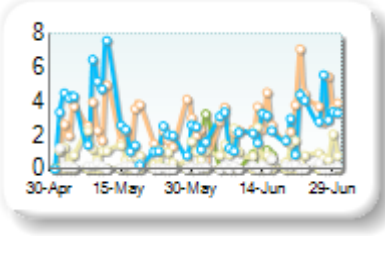
Market depth measures the amount of visible liquidity (bids and offers) in the order book within 10 or 50 BPS of mid price. The result is averaged over the stocks in the index and is based on measurements of the order book every 30 seconds. This is quoted in '000s of EUR.

Best Prices

At touch

| Rank | Venue | Best Price (%) | Change |
|------|-------|----------------|--------|
| 1 | XMAD | 3.11 | +0.47 |
| 2 | AQEU | 2.62 | -0.32 |
| 3 | CEUX | 1.03 | +0.41 |
| 4 | BATE | 0.27 | +0.37 |
| 5 | TQEX | 0.13 | -0.07 |
| 6 | CHIX | 0.00 | +0.00 |
| 7 | TRQX | 0.00 | +0.00 |
| 8 | AQXE | 0.00 | +0.00 |

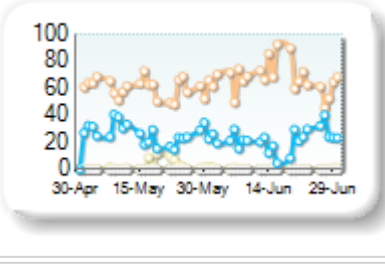
Best Prices Trend



25k EUR deal

| Rank | Venue | Best Price (%) | Change |
|------|-------|----------------|--------|
| 1 | XMAD | 67.54 | +7.13 |
| 2 | AQEU | 22.16 | -3.04 |
| 3 | CEUX | 0.57 | -1.95 |
| 4 | TQEX | 0.02 | +0.01 |
| 5 | CHIX | 0.00 | +0.00 |
| 6 | TRQX | 0.00 | +0.00 |
| 7 | BATE | 0.00 | +0.00 |
| 8 | AQXE | 0.00 | +0.00 |

Best Prices Trend

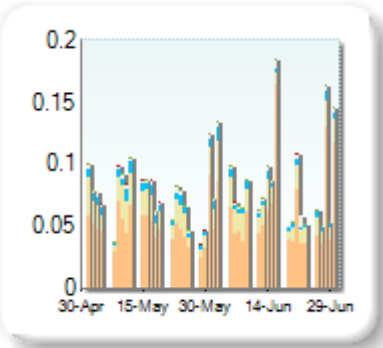


Best Price % measures how often each venue posts an absolute best price (no ties) for stocks. The result is averaged over the stocks in the index and is based on measurements of the order book every 5 seconds.

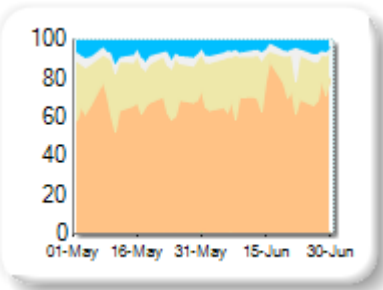
Market Share

| Rank | Venue | Market Share | Change |
|------|-------|--------------|--------|
| 1 | XMAD | 71.49% | +7.16 |
| 2 | CEUX | 19.18% | -4.40 |
| 3 | AQEU | 5.22% | -2.16 |
| 4 | TQEX | 3.95% | -0.43 |
| 5 | BATE | 0.16% | -0.13 |
| 6 | CHIX | 0.00% | -0.03 |

Volume Trend



Market Share Trend



Market share is based on on-book value traded during continuous trading. The share is calculated by averaging over all stocks in the index. The current value shown is for last week and the change is relative to the previous week.

Spreads

At touch

| Rank | Venue | Spread (bps) | Change |
|------|-------|--------------|--------|
| 1 | XMAD | 13.37 | -0.19 |
| 2 | CEUX | 13.66 | +0.29 |
| 3 | AQEU | 14.47 | +0.60 |
| 4 | TQEX | 37.45 | +2.39 |
| 5 | BATE | 144.64 | n/a |

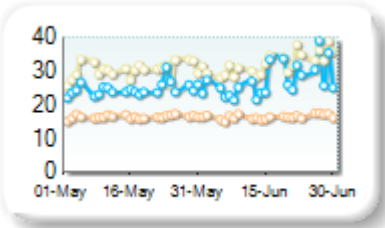
Monthly Spread Trend



25k EUR deal

| Rank | Venue | Spread (bps) | Change |
|------|-------|--------------|--------|
| 1 | XMAD | 16.37 | 0.00 |
| 2 | AQEU | 26.99 | +2.43 |
| 3 | CEUX | 31.99 | +1.86 |

Monthly Spread Trend



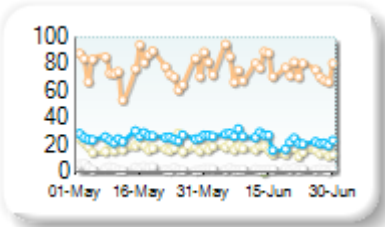
Spreads measure the bid to offer spread of the best visible orders in the book. The result is averaged over the stocks in the index and is based on measurements of the order books every 30 seconds. The value for the spread is quoted in basis points (0.01%).

Book Depths

10BPS Depth (top of book)

| Rank | Venue | Depth (1K EUR) | Change |
|------|-------|----------------|--------|
| 1 | XMAD | 76.8 | -0.3 |
| 2 | AQEU | 24.4 | -0.1 |
| 3 | CEUX | 16.4 | -2.5 |
| 4 | TQEX | 2.4 | -0.7 |
| 5 | BATE | 1.3 | +0.0 |

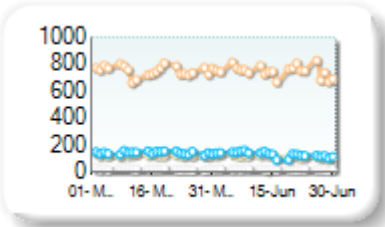
Monthly Depth Trend



50BPS Depth (deeper into book)

| Rank | Venue | Depth (1K EUR) | Change |
|------|-------|----------------|--------|
| 1 | XMAD | 745.8 | -2.3 |
| 2 | AQEU | 131.2 | -6.9 |
| 3 | CEUX | 117.5 | -9.5 |
| 4 | TQEX | 22.7 | -1.7 |
| 5 | BATE | 5.6 | +0.6 |

Monthly Depth Trend



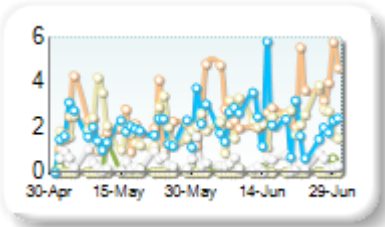
Market depth measures the amount of visible liquidity (bids and offers) in the order book within 10 or 50 BPS of mid price. The result is averaged over the stocks in the index and is based on measurements of the order book every 30 seconds. This is quoted in '000s of EUR.

Best Prices

At touch

| Rank | Venue | Best Price (%) | Change |
|------|-------|----------------|--------|
| 1 | XMAD | 3.18 | +1.90 |
| 2 | AQEU | 2.26 | +0.50 |
| 3 | CEUX | 2.26 | +0.00 |
| 4 | TQEX | 0.36 | -0.17 |
| 5 | BATE | 0.08 | -0.08 |
| 6 | CHIX | 0.00 | +0.00 |
| 7 | AQXE | 0.00 | +0.00 |

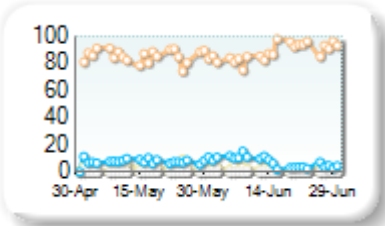
Best Prices Trend



25k EUR deal

| Rank | Venue | Best Price (%) | Change |
|------|-------|----------------|--------|
| 1 | XMAD | 88.18 | +3.03 |
| 2 | AQEU | 7.05 | -0.61 |
| 3 | CEUX | 2.11 | -0.75 |
| 4 | TQEX | 0.05 | +0.03 |
| 5 | CHIX | 0.00 | +0.00 |
| 6 | BATE | 0.00 | +0.00 |
| 7 | AQXE | 0.00 | +0.00 |

Best Prices Trend

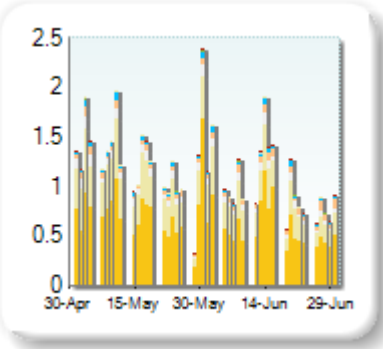


Best Price % measures how often each venue posts an absolute best price (no ties) for stocks. The result is averaged over the stocks in the index and is based on measurements of the order book every 5 seconds.

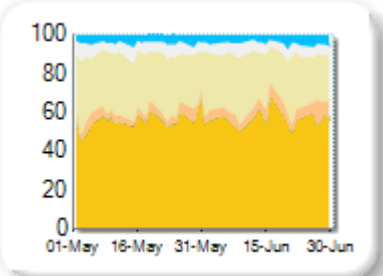
Market Share

| Rank | Venue | Market Share | Change |
|------|-------|--------------|--------|
| 1 | ENXT | 57.31% | +0.48 |
| 2 | CEUX | 27.24% | -2.19 |
| 3 | TQEX | 5.64% | -0.50 |
| 4 | XMAD | 5.57% | +1.97 |
| 5 | AQEU | 4.06% | +0.31 |
| 6 | BATE | 0.12% | -0.01 |
| 7 | CHIX | 0.05% | +0.02 |
| 8 | TRQX | 0.01% | -0.07 |
| 9 | AQXE | 0.00% | -0.01 |

Volume Trend



Market Share Trend



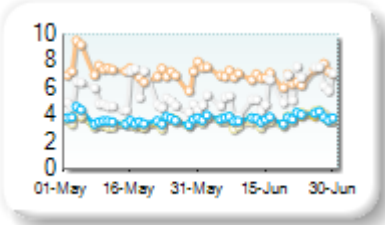
Market share is based on on-book value traded during continuous trading. The share is calculated by averaging over all stocks in the index. The current value shown is for last week and the change is relative to the previous week.

Spreads

At touch

| Rank | Venue | Spread (bps) | Change |
|------|-------|--------------|--------|
| 1 | CEUX | 3.66 | +0.24 |
| 2 | ENXT | 3.69 | +0.22 |
| 3 | AQEU | 3.79 | +0.15 |
| 4 | TQEX | 5.67 | +0.36 |
| 5 | XMAD | 6.96 | -0.36 |
| 6 | BATE | 399.89 | -9.28 |

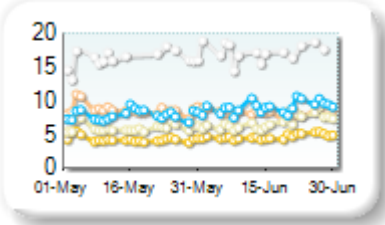
Monthly Spread Trend



25k EUR deal

| Rank | Venue | Spread (bps) | Change |
|------|-------|--------------|--------|
| 1 | ENXT | 4.68 | +0.38 |
| 2 | CEUX | 6.77 | +0.78 |
| 3 | XMAD | 8.29 | -0.38 |
| 4 | AQEU | 9.02 | +1.13 |
| 5 | TQEX | 18.45 | -9.43 |
| 6 | BATE | 324.24 | -82.04 |

Monthly Spread Trend



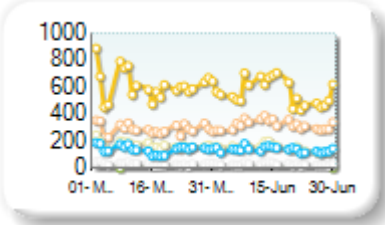
Spreads measure the bid to offer spread of the best visible orders in the book. The result is averaged over the stocks in the index and is based on measurements of the order books every 30 seconds. The value for the spread is quoted in basis points (0.01%).

Book Depths

10BPS Depth (top of book)

| Rank | Venue | Depth (1K EUR) | Change |
|------|-------|----------------|--------|
| 1 | ENXT | 558.9 | -56.6 |
| 2 | XMAD | 321.2 | +31.4 |
| 3 | CEUX | 148.8 | -20.3 |
| 4 | AQEU | 138.7 | +4.3 |
| 5 | TQEX | 30.5 | -2.3 |
| 6 | BATE | 0.1 | 0.0 |
| 7 | CHIX | 0.0 | 0.0 |

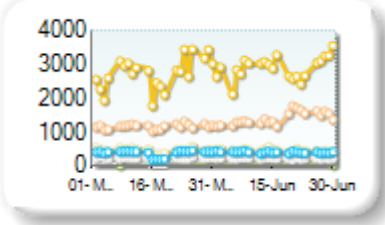
Monthly Depth Trend



50BPS Depth (deeper into book)

| Rank | Venue | Depth (1K EUR) | Change |
|------|-------|----------------|--------|
| 1 | ENXT | 2,886.3 | +156.8 |
| 2 | XMAD | 1,405.7 | +242.2 |
| 3 | CEUX | 459.2 | -3.7 |
| 4 | AQEU | 408.0 | +41.8 |
| 5 | TQEX | 221.7 | +16.5 |
| 6 | BATE | 4.6 | -0.7 |
| 7 | CHIX | 2.9 | -0.7 |

Monthly Depth Trend



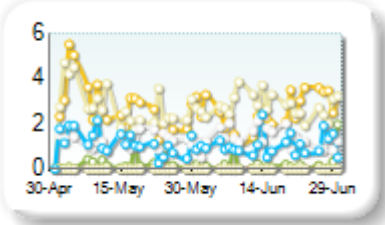
Market depth measures the amount of visible liquidity (bids and offers) in the order book within 10 or 50 BPS of mid price. The result is averaged over the stocks in the index and is based on measurements of the order book every 30 seconds. This is quoted in '000s of EUR.

Best Prices

At touch

| Rank | Venue | Best Price (%) | Change |
|------|-------|----------------|--------|
| 1 | CEUX | 2.79 | +0.21 |
| 2 | ENXT | 2.54 | -0.28 |
| 3 | TQEX | 1.35 | +0.10 |
| 4 | AQEU | 1.06 | -0.10 |
| 5 | BATE | 0.23 | +0.04 |
| 6 | CHIX | 0.01 | +0.01 |
| 7 | TRQX | 0.00 | +0.00 |
| 8 | AQXE | 0.00 | +0.00 |

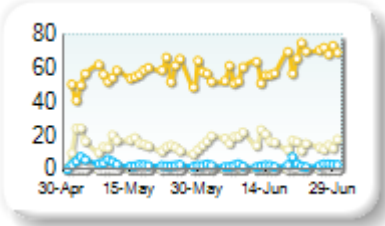
Best Prices Trend



25k EUR deal

| Rank | Venue | Best Price (%) | Change |
|------|-------|----------------|--------|
| 1 | ENXT | 61.49 | +5.44 |
| 2 | CEUX | 16.43 | +2.34 |
| 3 | AQEU | 2.48 | -0.49 |
| 4 | TQEX | 0.52 | +0.15 |
| 5 | CHIX | 0.00 | +0.00 |
| 6 | TRQX | 0.00 | +0.00 |
| 7 | BATE | 0.00 | +0.00 |
| 8 | AQXE | 0.00 | +0.00 |

Best Prices Trend

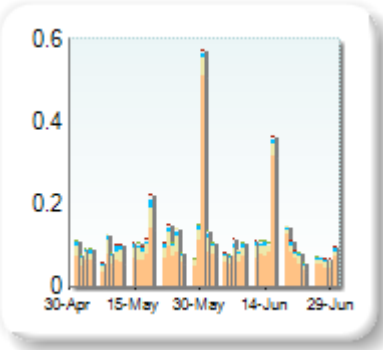


Best Price % measures how often each venue posts an absolute best price (no ties) for stocks. The result is averaged over the stocks in the index and is based on measurements of the order book every 5 seconds.

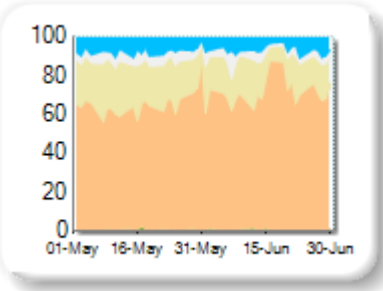
Market Share

| Rank | Venue | Market Share | Change |
|------|-------|--------------|--------|
| 1 | XMAD | 72.63% | +3.90 |
| 2 | CEUX | 15.94% | -3.66 |
| 3 | AQEU | 6.57% | -0.28 |
| 4 | TQEX | 4.33% | +0.10 |
| 5 | BATE | 0.53% | +0.02 |
| 6 | CHIX | 0.00% | -0.07 |
| 7 | AQXE | 0.00% | 0.00 |

Volume Trend



Market Share Trend



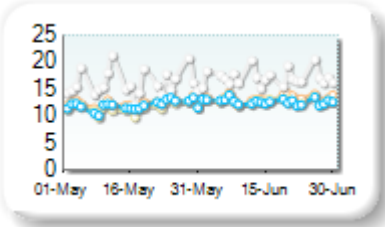
Market share is based on on-book value traded during continuous trading. The share is calculated by averaging over all stocks in the index. The current value shown is for last week and the change is relative to the previous week.

Spreads

At touch

| Rank | Venue | Spread (bps) | Change |
|------|-------|--------------|---------|
| 1 | AQEU | 12.65 | +0.68 |
| 2 | CEUX | 12.73 | +1.07 |
| 3 | XMAD | 13.21 | +0.85 |
| 4 | TQEX | 17.10 | +1.08 |
| 5 | BATE | 140.30 | -120.82 |

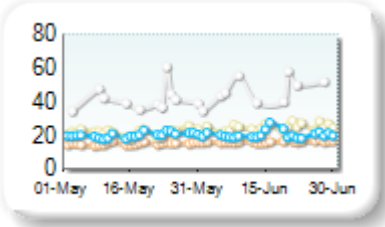
Monthly Spread Trend



25k EUR deal

| Rank | Venue | Spread (bps) | Change |
|------|-------|--------------|--------|
| 1 | XMAD | 16.45 | +1.12 |
| 2 | AQEU | 20.52 | +0.25 |
| 3 | CEUX | 24.72 | +2.75 |
| 4 | TQEX | 46.47 | +4.64 |

Monthly Spread Trend



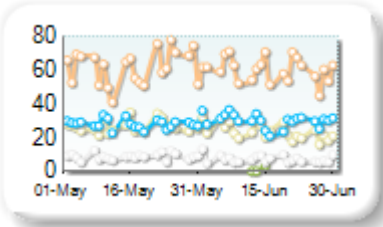
Spreads measure the bid to offer spread of the best visible orders in the book. The result is averaged over the stocks in the index and is based on measurements of the order books every 30 seconds. The value for the spread is quoted in basis points (0.01%).

Book Depths

10BPS Depth (top of book)

| Rank | Venue | Depth (1K EUR) | Change |
|------|-------|----------------|--------|
| 1 | XMAD | 60.1 | -1.3 |
| 2 | AQEU | 29.9 | +3.2 |
| 3 | CEUX | 23.4 | -3.0 |
| 4 | TQEX | 7.4 | -1.6 |
| 5 | BATE | 0.9 | -0.3 |
| 6 | CHIX | 0.2 | +0.0 |

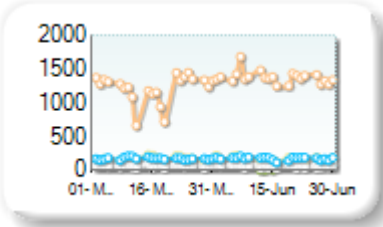
Monthly Depth Trend



50BPS Depth (deeper into book)

| Rank | Venue | Depth (1K EUR) | Change |
|------|-------|----------------|--------|
| 1 | XMAD | 1,367.1 | +155.8 |
| 2 | AQEU | 174.0 | +8.4 |
| 3 | CEUX | 164.2 | -6.4 |
| 4 | TQEX | 56.5 | -7.4 |
| 5 | BATE | 2.3 | -1.5 |
| 6 | CHIX | 0.7 | -0.2 |

Monthly Depth Trend



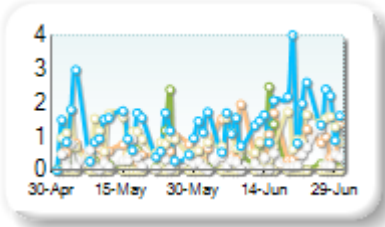
Market depth measures the amount of visible liquidity (bids and offers) in the order book within 10 or 50 BPS of mid price. The result is averaged over the stocks in the index and is based on measurements of the order book every 30 seconds. This is quoted in '000s of EUR.

Best Prices

At touch

| Rank | Venue | Best Price (%) | Change |
|------|-------|----------------|--------|
| 1 | AQEU | 1.62 | +0.93 |
| 2 | CEUX | 0.94 | +0.28 |
| 3 | XMAD | 0.77 | +0.22 |
| 4 | BATE | 0.28 | -0.15 |
| 5 | TQEX | 0.28 | +0.07 |
| 6 | CHIX | 0.00 | +0.00 |
| 7 | AQXE | 0.00 | +0.00 |

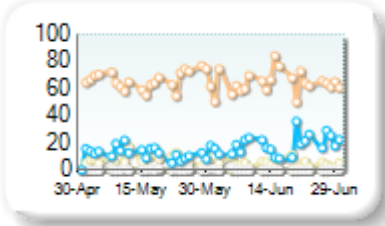
Best Prices Trend



25k EUR deal

| Rank | Venue | Best Price (%) | Change |
|------|-------|----------------|--------|
| 1 | XMAD | 64.16 | -1.53 |
| 2 | AQEU | 18.66 | +6.41 |
| 3 | CEUX | 5.09 | -2.92 |
| 4 | TQEX | 0.16 | -0.19 |
| 5 | CHIX | 0.00 | +0.00 |
| 6 | BATE | 0.00 | +0.00 |
| 7 | AQXE | 0.00 | +0.00 |

Best Prices Trend

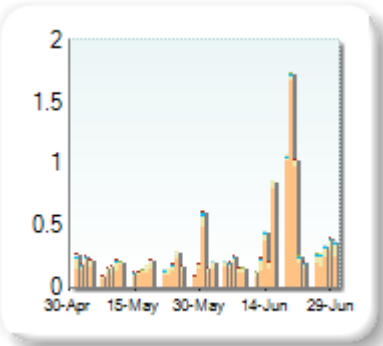


Best Price % measures how often each venue posts an absolute best price (no ties) for stocks. The result is averaged over the stocks in the index and is based on measurements of the order book every 5 seconds.

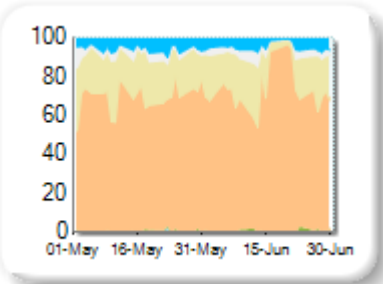
Market Share

| Rank | Venue | Market Share | Change |
|------|-------|--------------|--------|
| 1 | XMAD | 82.28% | +13.07 |
| 2 | CEUX | 11.80% | -8.97 |
| 3 | AQEU | 3.39% | -2.46 |
| 4 | TQEX | 2.08% | -1.31 |
| 5 | BATE | 0.39% | -0.13 |
| 6 | TRQX | 0.05% | -0.12 |
| 7 | CHIX | 0.01% | -0.07 |
| 8 | AQXE | 0.00% | +0.00 |

Volume Trend



Market Share Trend



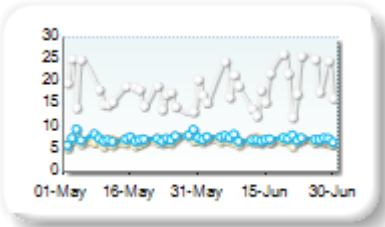
Market share is based on on-book value traded during continuous trading. The share is calculated by averaging over all stocks in the index. The current value shown is for last week and the change is relative to the previous week.

Spreads

At touch

| Rank | Venue | Spread (bps) | Change |
|------|-------|--------------|--------|
| 1 | CEUX | 6.79 | +0.10 |
| 2 | XMAD | 7.14 | -0.13 |
| 3 | AQEU | 7.46 | -0.10 |
| 4 | TQEX | 20.57 | -0.23 |
| 5 | BATE | 164.79 | n/a |

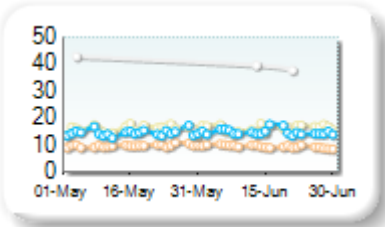
Monthly Spread Trend



25k EUR deal

| Rank | Venue | Spread (bps) | Change |
|------|-------|--------------|--------|
| 1 | XMAD | 9.56 | -0.27 |
| 2 | AQEU | 14.82 | +0.28 |
| 3 | CEUX | 16.20 | +0.26 |
| 4 | TQEX | 59.87 | +8.44 |
| 5 | BATE | 234.11 | n/a |

Monthly Spread Trend



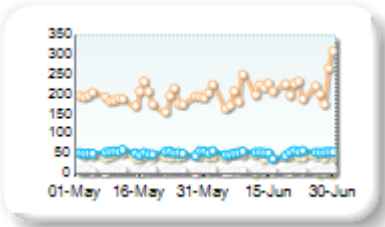
Spreads measure the bid to offer spread of the best visible orders in the book. The result is averaged over the stocks in the index and is based on measurements of the order books every 30 seconds. The value for the spread is quoted in basis points (0.01%).

Book Depths

10BPS Depth (top of book)

| Rank | Venue | Depth (1K EUR) | Change |
|------|-------|----------------|--------|
| 1 | XMAD | 215.3 | +22.9 |
| 2 | AQEU | 51.9 | +2.0 |
| 3 | CEUX | 44.4 | -0.2 |
| 4 | TQEX | 6.9 | -0.2 |
| 5 | TRQX | 4.6 | -0.2 |
| 6 | BATE | 0.8 | -0.1 |
| 7 | CHIX | 0.1 | +0.0 |

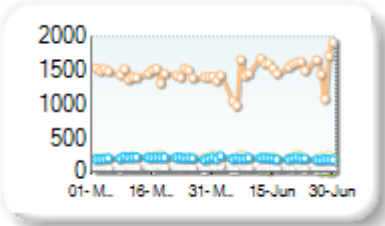
Monthly Depth Trend



50BPS Depth (deeper into book)

| Rank | Venue | Depth (1K EUR) | Change |
|------|-------|----------------|--------|
| 1 | XMAD | 1,489.4 | +46.8 |
| 2 | CEUX | 216.5 | +0.3 |
| 3 | AQEU | 196.6 | -0.9 |
| 4 | TQEX | 64.6 | -2.5 |
| 5 | BATE | 12.7 | +0.6 |
| 6 | CHIX | 8.1 | +0.3 |
| 7 | TRQX | 4.6 | -0.2 |

Monthly Depth Trend



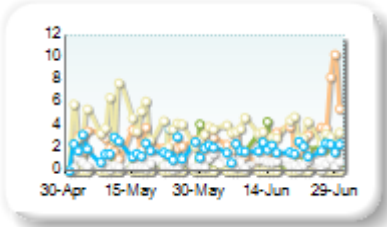
Market depth measures the amount of visible liquidity (bids and offers) in the order book within 10 or 50 BPS of mid price. The result is averaged over the stocks in the index and is based on measurements of the order book every 30 seconds. This is quoted in '000s of EUR.

Best Prices

At touch

| Rank | Venue | Best Price (%) | Change |
|------|-------|----------------|--------|
| 1 | CEUX | 3.44 | -0.95 |
| 2 | XMAD | 3.22 | +0.63 |
| 3 | AQEU | 1.93 | +0.47 |
| 4 | BATE | 0.92 | +0.71 |
| 5 | TQEX | 0.74 | +0.36 |
| 6 | CHIX | 0.00 | 0.00 |
| 7 | TRQX | 0.00 | -0.19 |
| 8 | AQXE | 0.00 | +0.00 |

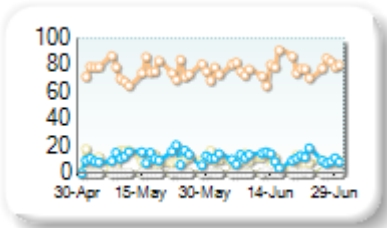
Best Prices Trend



25k EUR deal

| Rank | Venue | Best Price (%) | Change |
|------|-------|----------------|--------|
| 1 | XMAD | 77.75 | +2.26 |
| 2 | AQEU | 11.24 | -0.21 |
| 3 | CEUX | 8.96 | -1.38 |
| 4 | TQEX | 0.21 | +0.03 |
| 5 | BATE | 0.05 | +0.05 |
| 6 | CHIX | 0.00 | +0.00 |
| 7 | TRQX | 0.00 | +0.00 |
| 8 | AQXE | 0.00 | +0.00 |

Best Prices Trend

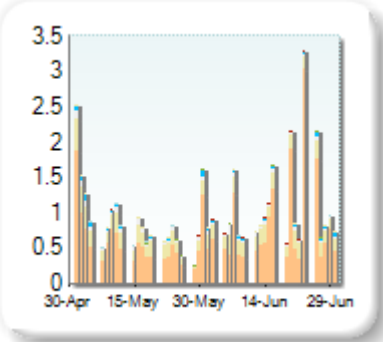


Best Price % measures how often each venue posts an absolute best price (no ties) for stocks. The result is averaged over the stocks in the index and is based on measurements of the order book every 5 seconds.

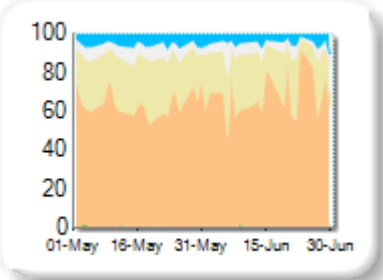
Market Share

| Rank | Venue | Market Share | Change |
|------|-------|--------------|--------|
| 1 | XMAD | 73.71% | +8.08 |
| 2 | CEUX | 17.91% | -5.05 |
| 3 | TQEX | 4.16% | -1.41 |
| 4 | AQEU | 3.89% | -1.22 |
| 5 | BATE | 0.30% | -0.18 |
| 6 | TRQX | 0.02% | -0.07 |
| 7 | CHIX | 0.00% | -0.14 |
| 8 | AQXE | 0.00% | 0.00 |

Volume Trend



Market Share Trend



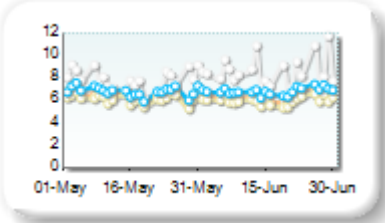
Market share is based on on-book value traded during continuous trading. The share is calculated by averaging over all stocks in the index. The current value shown is for last week and the change is relative to the previous week.

Spreads

At touch

| Rank | Venue | Spread (bps) | Change |
|------|-------|--------------|--------|
| 1 | CEUX | 5.98 | -0.16 |
| 2 | XMAD | 6.41 | -0.13 |
| 3 | AQEU | 6.83 | +0.01 |
| 4 | TQEX | 8.53 | +0.65 |
| 5 | BATE | 336.96 | -19.06 |

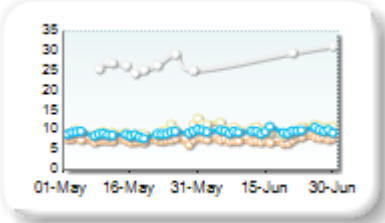
Monthly Spread Trend



25k EUR deal

| Rank | Venue | Spread (bps) | Change |
|------|-------|--------------|--------|
| 1 | XMAD | 7.56 | +0.11 |
| 2 | AQEU | 9.68 | +0.67 |
| 3 | CEUX | 10.36 | +0.79 |
| 4 | TQEX | 40.01 | +6.57 |
| 5 | BATE | 375.34 | +99.04 |

Monthly Spread Trend



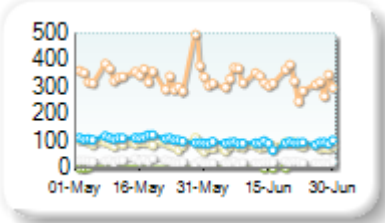
Spreads measure the bid to offer spread of the best visible orders in the book. The result is averaged over the stocks in the index and is based on measurements of the order books every 30 seconds. The value for the spread is quoted in basis points (0.01%).

Book Depths

10BPS Depth (top of book)

| Rank | Venue | Depth (1K EUR) | Change |
|------|-------|----------------|--------|
| 1 | XMAD | 321.1 | -22.0 |
| 2 | AQEU | 93.0 | -10.8 |
| 3 | CEUX | 81.5 | -8.3 |
| 4 | TQEX | 21.4 | -5.8 |
| 5 | BATE | 0.4 | -0.2 |

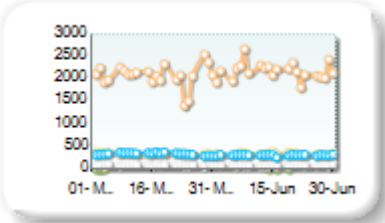
Monthly Depth Trend



50BPS Depth (deeper into book)

| Rank | Venue | Depth (1K EUR) | Change |
|------|-------|----------------|--------|
| 1 | XMAD | 2,173.5 | +104.0 |
| 2 | CEUX | 338.3 | +3.1 |
| 3 | AQEU | 315.0 | -14.8 |
| 4 | TQEX | 90.6 | -10.6 |
| 5 | BATE | 4.0 | -1.5 |
| 6 | CHIX | 3.5 | -3.1 |

Monthly Depth Trend



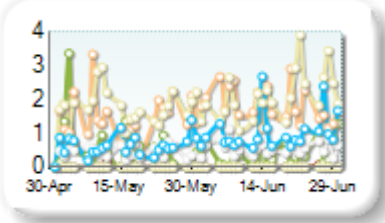
Market depth measures the amount of visible liquidity (bids and offers) in the order book within 10 or 50 BPS of mid price. The result is averaged over the stocks in the index and is based on measurements of the order book every 30 seconds. This is quoted in '000s of EUR.

Best Prices

At touch

| Rank | Venue | Best Price (%) | Change |
|------|-------|----------------|--------|
| 1 | CEUX | 2.09 | +0.24 |
| 2 | XMAD | 1.83 | +0.67 |
| 3 | AQEU | 1.02 | +0.01 |
| 4 | TQEX | 0.55 | -0.03 |
| 5 | BATE | 0.36 | -0.39 |
| 6 | CHIX | 0.00 | -0.01 |
| 7 | TRQX | 0.00 | +0.00 |
| 8 | AQXE | 0.00 | +0.00 |

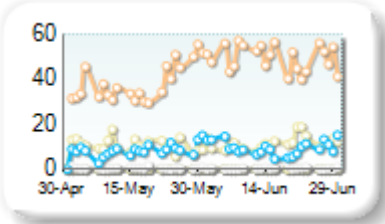
Best Prices Trend



25k EUR deal

| Rank | Venue | Best Price (%) | Change |
|------|-------|----------------|--------|
| 1 | XMAD | 49.28 | +11.05 |
| 2 | CEUX | 11.83 | +1.46 |
| 3 | AQEU | 9.46 | +1.28 |
| 4 | TQEX | 0.52 | -0.07 |
| 5 | BATE | 0.00 | -0.01 |
| 6 | CHIX | 0.00 | +0.00 |
| 7 | TRQX | 0.00 | +0.00 |
| 8 | AQXE | 0.00 | +0.00 |

Best Prices Trend

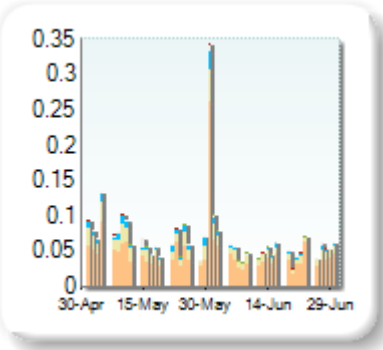


Best Price % measures how often each venue posts an absolute best price (no ties) for stocks. The result is averaged over the stocks in the index and is based on measurements of the order book every 5 seconds.

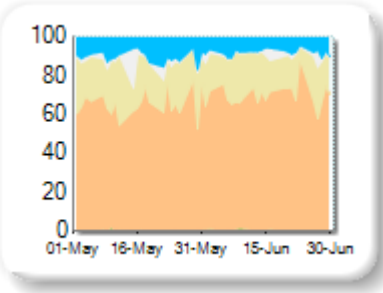
Market Share

| Rank | Venue | Market Share | Change |
|------|-------|--------------|--------|
| 1 | XMAD | 69.55% | +3.04 |
| 2 | CEUX | 19.73% | -0.69 |
| 3 | AQEU | 7.93% | -2.13 |
| 4 | TQEX | 2.41% | -0.31 |
| 5 | BATE | 0.36% | +0.17 |
| 6 | TRQX | 0.02% | -0.04 |
| 7 | CHIX | 0.00% | -0.04 |

Volume Trend



Market Share Trend



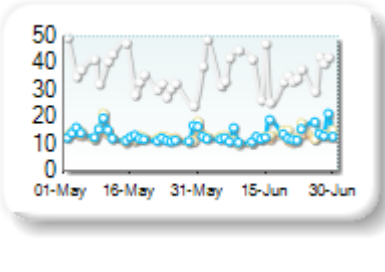
Market share is based on on-book value traded during continuous trading. The share is calculated by averaging over all stocks in the index. The current value shown is for last week and the change is relative to the previous week.

Spreads

At touch

| Rank | Venue | Spread (bps) | Change |
|------|-------|--------------|--------|
| 1 | XMAD | 12.16 | -0.83 |
| 2 | CEUX | 13.07 | -0.42 |
| 3 | AQEU | 13.52 | +0.15 |
| 4 | TQEX | 39.24 | -1.77 |

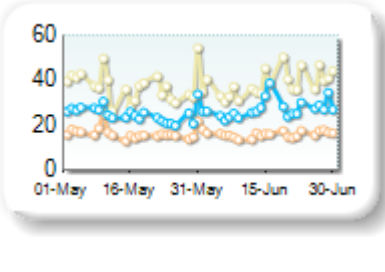
Monthly Spread Trend



25k EUR deal

| Rank | Venue | Spread (bps) | Change |
|------|-------|--------------|--------|
| 1 | XMAD | 15.99 | -0.45 |
| 2 | AQEU | 27.13 | +2.23 |
| 3 | CEUX | 38.29 | +1.08 |
| 4 | TQEX | 90.39 | +13.23 |

Monthly Spread Trend



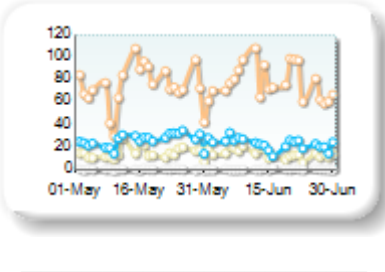
Spreads measure the bid to offer spread of the best visible orders in the book. The result is averaged over the stocks in the index and is based on measurements of the order books every 30 seconds. The value for the spread is quoted in basis points (0.01%).

Book Depths

10BPS Depth (top of book)

| Rank | Venue | Depth (1K EUR) | Change |
|------|-------|----------------|--------|
| 1 | XMAD | 78.1 | +3.9 |
| 2 | AQEU | 23.6 | -1.9 |
| 3 | CEUX | 14.8 | -0.7 |
| 4 | BATE | 1.9 | +0.1 |
| 5 | TQEX | 1.2 | 0.0 |

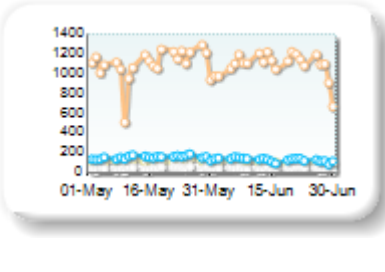
Monthly Depth Trend



50BPS Depth (deeper into book)

| Rank | Venue | Depth (1K EUR) | Change |
|------|-------|----------------|--------|
| 1 | XMAD | 1,090.4 | -6.9 |
| 2 | AQEU | 126.6 | -17.6 |
| 3 | CEUX | 103.7 | -4.0 |
| 4 | TQEX | 31.2 | -2.1 |
| 5 | BATE | 19.3 | +2.3 |
| 6 | CHIX | 0.6 | +0.0 |

Monthly Depth Trend



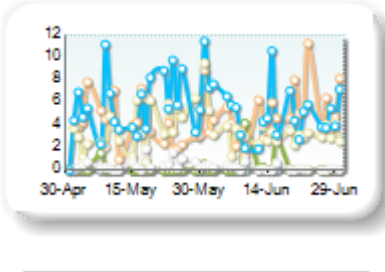
Market depth measures the amount of visible liquidity (bids and offers) in the order book within 10 or 50 BPS of mid price. The result is averaged over the stocks in the index and is based on measurements of the order book every 30 seconds. This is quoted in '000s of EUR.

Best Prices

At touch

| Rank | Venue | Best Price (%) | Change |
|------|-------|----------------|--------|
| 1 | AQEU | 5.07 | -1.05 |
| 2 | XMAD | 4.94 | +1.43 |
| 3 | CEUX | 3.19 | -0.83 |
| 4 | BATE | 0.33 | +0.40 |
| 5 | TQEX | 0.19 | -0.29 |
| 6 | CHIX | 0.00 | +0.00 |
| 7 | TRQX | 0.00 | +0.00 |

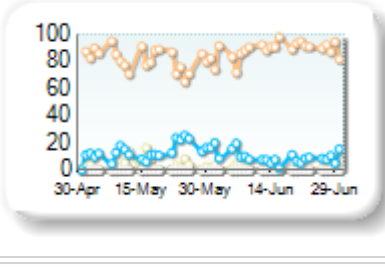
Best Prices Trend



25k EUR deal

| Rank | Venue | Best Price (%) | Change |
|------|-------|----------------|--------|
| 1 | XMAD | 88.32 | +6.98 |
| 2 | AQEU | 9.45 | -3.91 |
| 3 | CEUX | 1.61 | -1.66 |
| 4 | BATE | 0.08 | +0.08 |
| 5 | CHIX | 0.00 | +0.00 |
| 6 | TRQX | 0.00 | +0.00 |
| 7 | TQEX | 0.00 | +0.00 |

Best Prices Trend

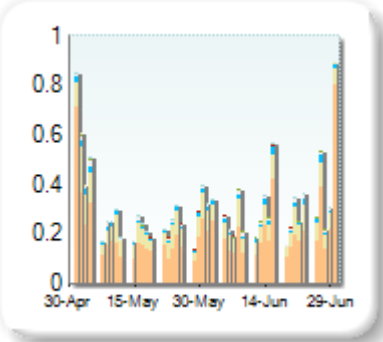


Best Price % measures how often each venue posts an absolute best price (no ties) for stocks. The result is averaged over the stocks in the index and is based on measurements of the order book every 5 seconds.

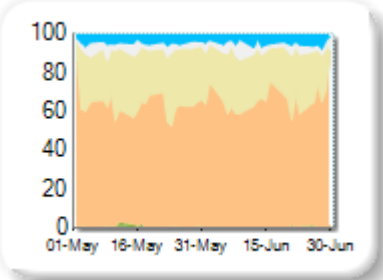
Market Share

| Rank | Venue | Market Share | Change |
|------|-------|--------------|--------|
| 1 | XMAD | 68.55% | +4.45 |
| 2 | CEUX | 22.62% | -3.97 |
| 3 | AQEU | 4.67% | +0.18 |
| 4 | TQEX | 3.67% | -0.21 |
| 5 | BATE | 0.42% | -0.02 |
| 6 | TRQX | 0.04% | -0.15 |
| 7 | CHIX | 0.04% | -0.27 |
| 8 | AQXE | 0.00% | 0.00 |

Volume Trend



Market Share Trend



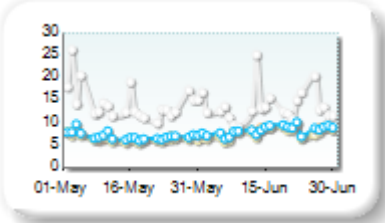
Market share is based on on-book value traded during continuous trading. The share is calculated by averaging over all stocks in the index. The current value shown is for last week and the change is relative to the previous week.

Spreads

At touch

| Rank | Venue | Spread (bps) | Change |
|------|-------|--------------|--------|
| 1 | CEUX | 7.85 | +1.31 |
| 2 | XMAD | 8.28 | +1.46 |
| 3 | AQEU | 8.42 | +1.28 |
| 4 | TQEX | 13.80 | -0.69 |
| 5 | BATE | 297.90 | -14.36 |

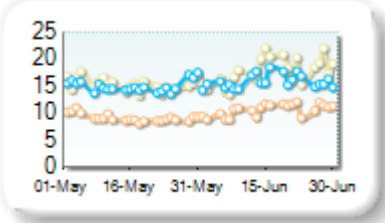
Monthly Spread Trend



25k EUR deal

| Rank | Venue | Spread (bps) | Change |
|------|-------|--------------|--------|
| 1 | XMAD | 10.64 | +1.48 |
| 2 | AQEU | 15.84 | +0.88 |
| 3 | CEUX | 17.73 | +2.44 |
| 4 | TQEX | 63.81 | -1.36 |

Monthly Spread Trend



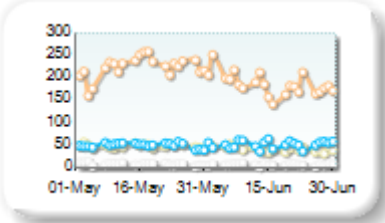
Spreads measure the bid to offer spread of the best visible orders in the book. The result is averaged over the stocks in the index and is based on measurements of the order books every 30 seconds. The value for the spread is quoted in basis points (0.01%).

Book Depths

10BPS Depth (top of book)

| Rank | Venue | Depth (1K EUR) | Change |
|------|-------|----------------|--------|
| 1 | XMAD | 186.1 | -37.8 |
| 2 | AQEU | 52.8 | +3.9 |
| 3 | CEUX | 43.4 | -6.1 |
| 4 | TQEX | 8.6 | -1.2 |
| 5 | BATE | 1.8 | +0.0 |

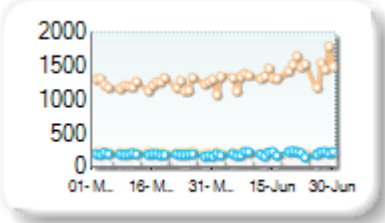
Monthly Depth Trend



50BPS Depth (deeper into book)

| Rank | Venue | Depth (1K EUR) | Change |
|------|-------|----------------|--------|
| 1 | XMAD | 1,397.3 | +166.4 |
| 2 | CEUX | 208.6 | -14.5 |
| 3 | AQEU | 205.6 | +22.7 |
| 4 | TQEX | 59.8 | -1.5 |
| 5 | BATE | 3.6 | -0.4 |
| 6 | CHIX | 0.0 | -0.3 |

Monthly Depth Trend



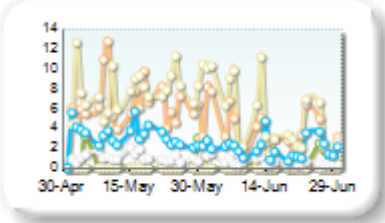
Market depth measures the amount of visible liquidity (bids and offers) in the order book within 10 or 50 BPS of mid price. The result is averaged over the stocks in the index and is based on measurements of the order book every 30 seconds. This is quoted in '000s of EUR.

Best Prices

At touch

| Rank | Venue | Best Price (%) | Change |
|------|-------|----------------|--------|
| 1 | CEUX | 4.91 | -2.74 |
| 2 | XMAD | 3.62 | -2.97 |
| 3 | AQEU | 2.01 | -0.89 |
| 4 | TQEX | 0.59 | -0.49 |
| 5 | BATE | 0.38 | +0.15 |
| 6 | CHIX | 0.00 | 0.00 |
| 7 | TRQX | 0.00 | +0.00 |
| 8 | AQXE | 0.00 | +0.00 |

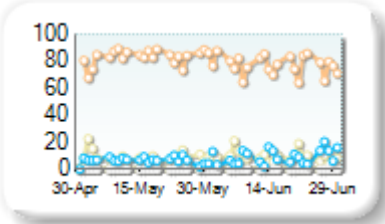
Best Prices Trend



25k EUR deal

| Rank | Venue | Best Price (%) | Change |
|------|-------|----------------|--------|
| 1 | XMAD | 76.69 | -6.05 |
| 2 | CEUX | 9.74 | +0.82 |
| 3 | AQEU | 9.32 | +2.77 |
| 4 | TQEX | 0.05 | +0.04 |
| 5 | CHIX | 0.00 | +0.00 |
| 6 | TRQX | 0.00 | +0.00 |
| 7 | BATE | 0.00 | +0.00 |
| 8 | AQXE | 0.00 | +0.00 |

Best Prices Trend

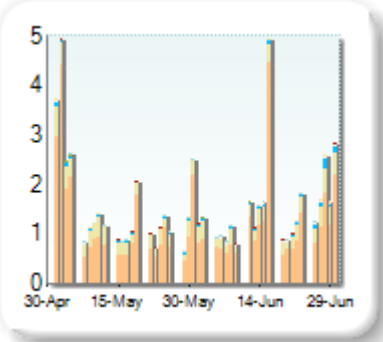


Best Price % measures how often each venue posts an absolute best price (no ties) for stocks. The result is averaged over the stocks in the index and is based on measurements of the order book every 5 seconds.

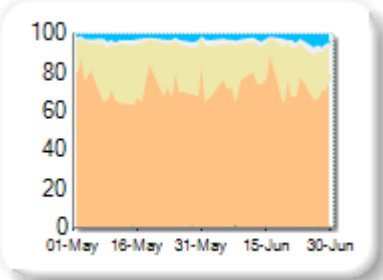
Market Share

| Rank | Venue | Market Share | Change |
|------|-------|--------------|--------|
| 1 | XMAD | 74.51% | -2.08 |
| 2 | CEUX | 19.06% | -0.09 |
| 3 | AQEU | 3.27% | +1.16 |
| 4 | TQEX | 2.50% | +0.66 |
| 5 | BATE | 0.57% | +0.33 |
| 6 | CHIX | 0.06% | +0.00 |
| 7 | TRQX | 0.03% | +0.01 |
| 8 | AQXE | 0.00% | 0.00 |

Volume Trend



Market Share Trend



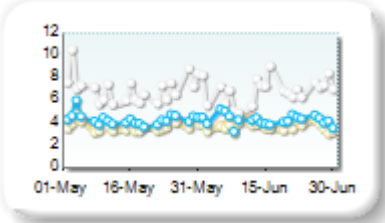
Market share is based on on-book value traded during continuous trading. The share is calculated by averaging over all stocks in the index. The current value shown is for last week and the change is relative to the previous week.

Spreads

At touch

| Rank | Venue | Spread (bps) | Change |
|------|-------|--------------|--------|
| 1 | CEUX | 3.69 | -0.03 |
| 2 | XMAD | 3.95 | -0.02 |
| 3 | AQEU | 4.30 | -0.04 |
| 4 | TQEX | 6.90 | -0.13 |
| 5 | BATE | 319.97 | -32.09 |

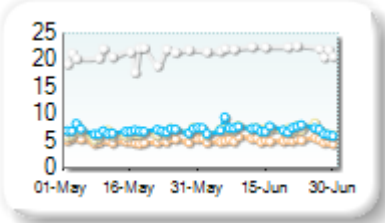
Monthly Spread Trend



25k EUR deal

| Rank | Venue | Spread (bps) | Change |
|------|-------|--------------|--------|
| 1 | XMAD | 5.18 | +0.07 |
| 2 | CEUX | 7.10 | +0.62 |
| 3 | AQEU | 7.21 | +0.29 |
| 4 | TQEX | 23.05 | +0.63 |
| 5 | BATE | 383.73 | -33.33 |

Monthly Spread Trend



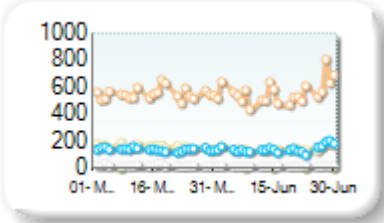
Spreads measure the bid to offer spread of the best visible orders in the book. The result is averaged over the stocks in the index and is based on measurements of the order books every 30 seconds. The value for the spread is quoted in basis points (0.01%).

Book Depths

10BPS Depth (top of book)

| Rank | Venue | Depth (1K EUR) | Change |
|------|-------|----------------|--------|
| 1 | XMAD | 558.8 | +9.5 |
| 2 | CEUX | 143.4 | -15.5 |
| 3 | AQEU | 142.9 | +9.7 |
| 4 | TQEX | 18.4 | -4.6 |
| 5 | BATE | 1.0 | +0.6 |

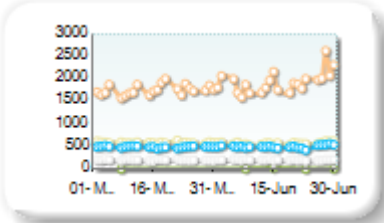
Monthly Depth Trend



50BPS Depth (deeper into book)

| Rank | Venue | Depth (1K EUR) | Change |
|------|-------|----------------|--------|
| 1 | XMAD | 1,925.5 | +169.5 |
| 2 | CEUX | 579.2 | -13.9 |
| 3 | AQEU | 501.6 | +28.1 |
| 4 | TQEX | 207.3 | -0.2 |
| 5 | CHIX | 18.8 | +2.2 |
| 6 | BATE | 7.8 | +4.1 |

Monthly Depth Trend



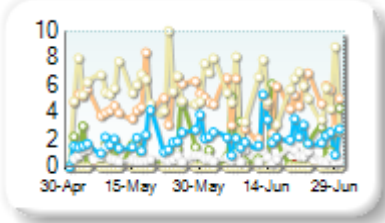
Market depth measures the amount of visible liquidity (bids and offers) in the order book within 10 or 50 BPS of mid price. The result is averaged over the stocks in the index and is based on measurements of the order book every 30 seconds. This is quoted in '000s of EUR.

Best Prices

At touch

| Rank | Venue | Best Price (%) | Change |
|------|-------|----------------|--------|
| 1 | CEUX | 5.35 | -0.26 |
| 2 | XMAD | 4.61 | -0.16 |
| 3 | AQEU | 2.30 | +0.72 |
| 4 | BATE | 1.61 | -0.30 |
| 5 | TQEX | 0.71 | -0.09 |
| 6 | CHIX | 0.01 | +0.00 |
| 7 | TRQX | 0.00 | +0.00 |
| 8 | AQXE | 0.00 | +0.00 |

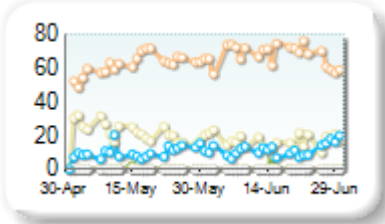
Best Prices Trend



25k EUR deal

| Rank | Venue | Best Price (%) | Change |
|------|-------|----------------|--------|
| 1 | XMAD | 67.37 | +5.37 |
| 2 | CEUX | 16.63 | -4.39 |
| 3 | AQEU | 11.63 | +1.77 |
| 4 | BATE | 0.41 | +0.31 |
| 5 | TQEX | 0.15 | +0.03 |
| 6 | CHIX | 0.00 | +0.00 |
| 7 | TRQX | 0.00 | +0.00 |
| 8 | AQXE | 0.00 | +0.00 |

Best Prices Trend

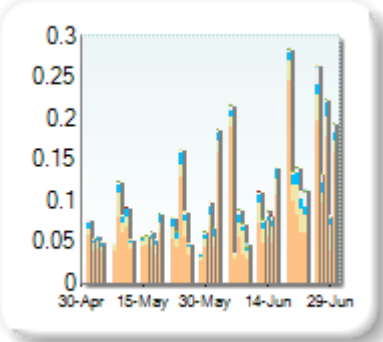


Best Price % measures how often each venue posts an absolute best price (no ties) for stocks. The result is averaged over the stocks in the index and is based on measurements of the order book every 5 seconds.

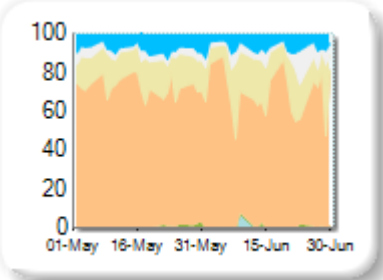
Market Share

| Rank | Venue | Market Share | Change |
|------|-------|--------------|--------|
| 1 | XMAD | 71.86% | +0.51 |
| 2 | CEUX | 15.46% | -0.23 |
| 3 | AQEU | 6.95% | -1.54 |
| 4 | TQEX | 5.05% | +1.35 |
| 5 | BATE | 0.41% | -0.34 |
| 6 | TRQX | 0.23% | +0.23 |
| 7 | CHIX | 0.02% | +0.01 |
| 8 | AQXE | 0.02% | +0.00 |

Volume Trend



Market Share Trend



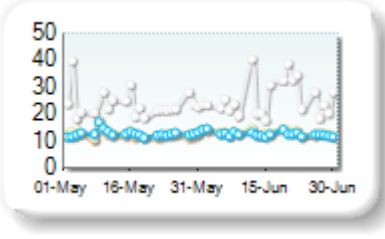
Market share is based on on-book value traded during continuous trading. The share is calculated by averaging over all stocks in the index. The current value shown is for last week and the change is relative to the previous week.

Spreads

At touch

| Rank | Venue | Spread (bps) | Change |
|------|-------|--------------|--------|
| 1 | AQEU | 12.71 | -0.16 |
| 2 | XMAD | 12.85 | +0.62 |
| 3 | CEUX | 13.26 | +0.21 |
| 4 | TQEX | 25.81 | +0.76 |

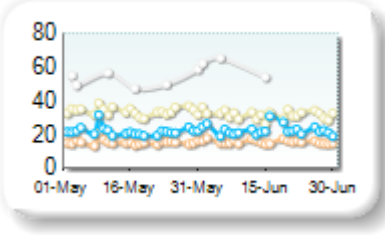
Monthly Spread Trend



25k EUR deal

| Rank | Venue | Spread (bps) | Change |
|------|-------|--------------|--------|
| 1 | XMAD | 15.63 | +0.21 |
| 2 | AQEU | 22.47 | +0.62 |
| 3 | CEUX | 31.66 | -2.01 |
| 4 | TQEX | 62.73 | +0.58 |

Monthly Spread Trend



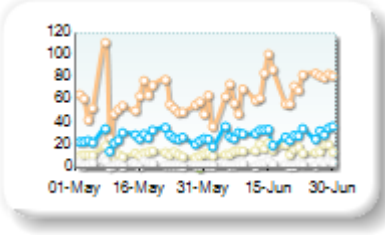
Spreads measure the bid to offer spread of the best visible orders in the book. The result is averaged over the stocks in the index and is based on measurements of the order books every 30 seconds. The value for the spread is quoted in basis points (0.01%).

Book Depths

10BPS Depth (top of book)

| Rank | Venue | Depth (1K EUR) | Change |
|------|-------|----------------|--------|
| 1 | XMAD | 70.8 | +11.9 |
| 2 | AQEU | 29.8 | +4.4 |
| 3 | CEUX | 16.1 | +3.7 |
| 4 | TQEX | 3.8 | +0.4 |
| 5 | BATE | 3.1 | -0.1 |

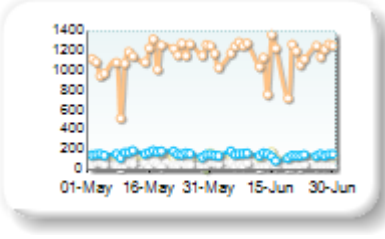
Monthly Depth Trend



50BPS Depth (deeper into book)

| Rank | Venue | Depth (1K EUR) | Change |
|------|-------|----------------|--------|
| 1 | XMAD | 1,159.0 | +30.5 |
| 2 | AQEU | 143.1 | -8.2 |
| 3 | CEUX | 129.2 | +5.2 |
| 4 | TQEX | 36.8 | -11.4 |
| 5 | BATE | 3.8 | -1.1 |

Monthly Depth Trend



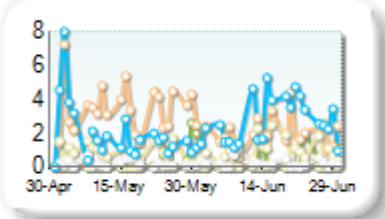
Market depth measures the amount of visible liquidity (bids and offers) in the order book within 10 or 50 BPS of mid price. The result is averaged over the stocks in the index and is based on measurements of the order book every 30 seconds. This is quoted in '000s of EUR.

Best Prices

At touch

| Rank | Venue | Best Price (%) | Change |
|------|-------|----------------|--------|
| 1 | AQEU | 2.73 | -0.25 |
| 2 | XMAD | 1.95 | -1.07 |
| 3 | CEUX | 0.98 | +0.10 |
| 4 | BATE | 0.25 | -0.14 |
| 5 | TQEX | 0.24 | +0.01 |
| 6 | CHIX | 0.00 | +0.00 |
| 7 | TRQX | 0.00 | +0.00 |
| 8 | AQXE | 0.00 | +0.00 |

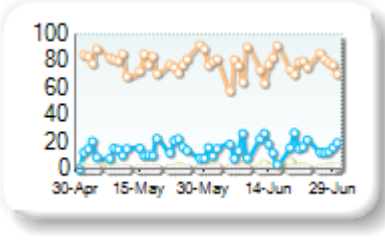
Best Prices Trend



25k EUR deal

| Rank | Venue | Best Price (%) | Change |
|------|-------|----------------|--------|
| 1 | XMAD | 76.69 | -3.18 |
| 2 | AQEU | 15.95 | +2.63 |
| 3 | CEUX | 1.78 | +0.87 |
| 4 | TQEX | 0.12 | +0.07 |
| 5 | CHIX | 0.00 | +0.00 |
| 6 | TRQX | 0.00 | +0.00 |
| 7 | BATE | 0.00 | +0.00 |
| 8 | AQXE | 0.00 | +0.00 |

Best Prices Trend

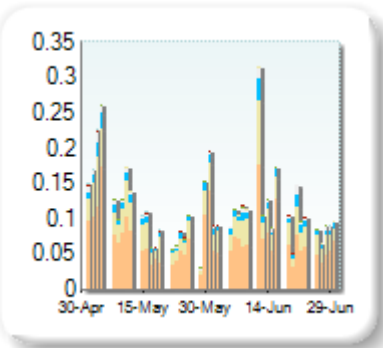


Best Price % measures how often each venue posts an absolute best price (no ties) for stocks. The result is averaged over the stocks in the index and is based on measurements of the order book every 5 seconds.

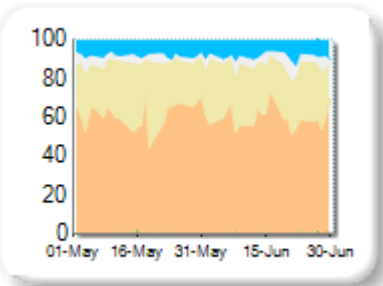
Market Share

| Rank | Venue | Market Share | Change |
|------|-------|--------------|--------|
| 1 | XMAD | 59.31% | -1.90 |
| 2 | CEUX | 27.01% | +0.34 |
| 3 | AQEU | 8.49% | +0.87 |
| 4 | TQEX | 4.66% | +0.74 |
| 5 | BATE | 0.42% | -0.01 |
| 6 | CHIX | 0.06% | -0.04 |
| 7 | TRQX | 0.04% | -0.01 |
| 8 | AQXE | 0.01% | +0.01 |

Volume Trend



Market Share Trend



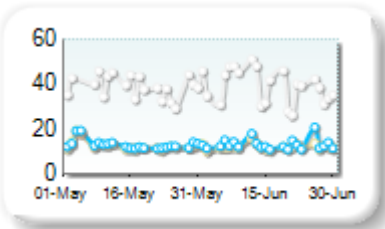
Market share is based on on-book value traded during continuous trading. The share is calculated by averaging over all stocks in the index. The current value shown is for last week and the change is relative to the previous week.

Spreads

At touch

| Rank | Venue | Spread (bps) | Change |
|------|-------|--------------|--------|
| 1 | CEUX | 12.11 | -0.63 |
| 2 | XMAD | 12.15 | -0.49 |
| 3 | AQEU | 13.23 | +0.05 |
| 4 | TQEX | 38.99 | -3.19 |
| 5 | BATE | 362.50 | n/a |

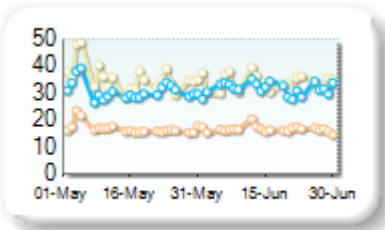
Monthly Spread Trend



25k EUR deal

| Rank | Venue | Spread (bps) | Change |
|------|-------|--------------|--------|
| 1 | XMAD | 16.65 | -0.26 |
| 2 | AQEU | 31.58 | +0.92 |
| 3 | CEUX | 33.82 | -1.83 |

Monthly Spread Trend



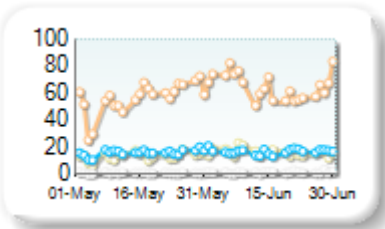
Spreads measure the bid to offer spread of the best visible orders in the book. The result is averaged over the stocks in the index and is based on measurements of the order books every 30 seconds. The value for the spread is quoted in basis points (0.01%).

Book Depths

10BPS Depth (top of book)

| Rank | Venue | Depth (1K EUR) | Change |
|------|-------|----------------|--------|
| 1 | XMAD | 65.0 | +8.5 |
| 2 | AQEU | 16.8 | +1.5 |
| 3 | CEUX | 16.3 | +2.8 |
| 4 | TQEX | 1.7 | +0.5 |
| 5 | BATE | 0.1 | -0.1 |

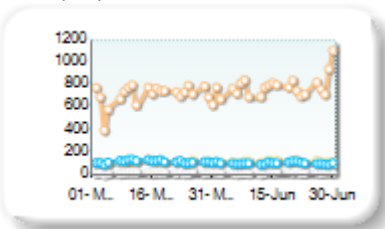
Monthly Depth Trend



50BPS Depth (deeper into book)

| Rank | Venue | Depth (1K EUR) | Change |
|------|-------|----------------|--------|
| 1 | XMAD | 787.4 | +76.8 |
| 2 | CEUX | 120.4 | +2.1 |
| 3 | AQEU | 108.2 | -7.8 |
| 4 | TQEX | 24.9 | +2.2 |
| 5 | CHIX | 15.2 | +0.7 |
| 6 | BATE | 6.0 | -1.8 |

Monthly Depth Trend



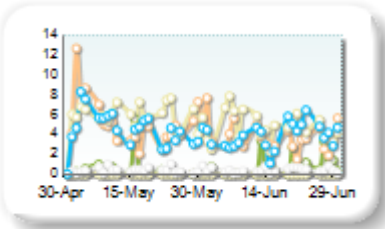
Market depth measures the amount of visible liquidity (bids and offers) in the order book within 10 or 50 BPS of mid price. The result is averaged over the stocks in the index and is based on measurements of the order book every 30 seconds. This is quoted in '000s of EUR.

Best Prices

At touch

| Rank | Venue | Best Price (%) | Change |
|------|-------|----------------|--------|
| 1 | CEUX | 4.75 | -1.05 |
| 2 | AQEU | 3.87 | -0.46 |
| 3 | XMAD | 3.71 | -1.23 |
| 4 | BATE | 0.70 | +0.90 |
| 5 | TQEX | 0.40 | -0.06 |
| 6 | CHIX | 0.00 | +0.00 |
| 7 | TRQX | 0.00 | +0.00 |
| 8 | AQXE | 0.00 | +0.00 |

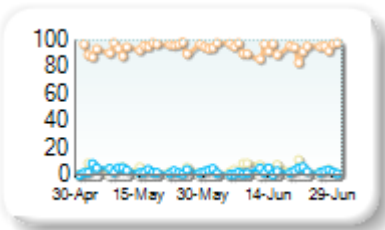
Best Prices Trend



25k EUR deal

| Rank | Venue | Best Price (%) | Change |
|------|-------|----------------|--------|
| 1 | XMAD | 93.44 | -0.55 |
| 2 | CEUX | 3.63 | +1.09 |
| 3 | AQEU | 2.69 | -0.37 |
| 4 | TQEX | 0.01 | +0.00 |
| 5 | CHIX | 0.00 | +0.00 |
| 6 | TRQX | 0.00 | +0.00 |
| 7 | BATE | 0.00 | +0.00 |
| 8 | AQXE | 0.00 | +0.00 |

Best Prices Trend

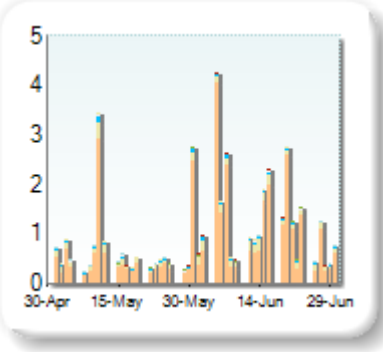


Best Price % measures how often each venue posts an absolute best price (no ties) for stocks. The result is averaged over the stocks in the index and is based on measurements of the order book every 5 seconds.

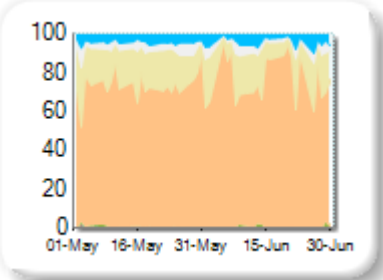
Market Share

| Rank | Venue | Market Share | Change |
|------|-------|--------------|--------|
| 1 | XMAD | 83.75% | +6.36 |
| 2 | CEUX | 10.43% | -4.35 |
| 3 | AQEU | 3.07% | -0.88 |
| 4 | TQEX | 2.30% | -1.00 |
| 5 | BATE | 0.41% | +0.06 |
| 6 | CHIX | 0.02% | -0.12 |
| 7 | TRQX | 0.01% | -0.07 |
| 8 | AQXE | 0.00% | +0.00 |

Volume Trend



Market Share Trend



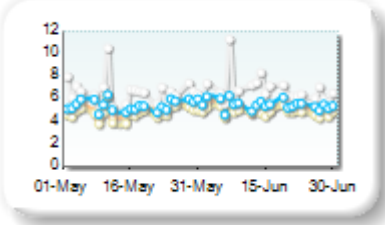
Market share is based on on-book value traded during continuous trading. The share is calculated by averaging over all stocks in the index. The current value shown is for last week and the change is relative to the previous week.

Spreads

At touch

| Rank | Venue | Spread (bps) | Change |
|------|-------|--------------|---------|
| 1 | CEUX | 4.88 | +0.11 |
| 2 | XMAD | 5.16 | +0.04 |
| 3 | AQEU | 5.50 | +0.06 |
| 4 | TQEX | 6.78 | +0.13 |
| 5 | BATE | 232.02 | -40.62 |
| 6 | CHIX | 498.83 | +424.92 |
| 7 | TRQX | 501.00 | n/a |
| 8 | AQXE | 501.00 | +0.00 |

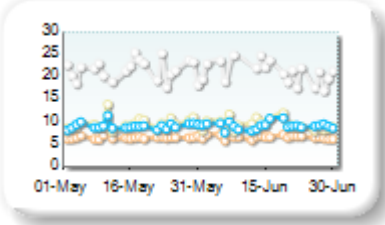
Monthly Spread Trend



25k EUR deal

| Rank | Venue | Spread (bps) | Change |
|------|-------|--------------|--------|
| 1 | XMAD | 6.71 | +0.06 |
| 2 | AQEU | 9.19 | +0.05 |
| 3 | CEUX | 9.48 | -0.19 |
| 4 | TQEX | 24.72 | +2.75 |
| 5 | BATE | 271.94 | -12.01 |

Monthly Spread Trend



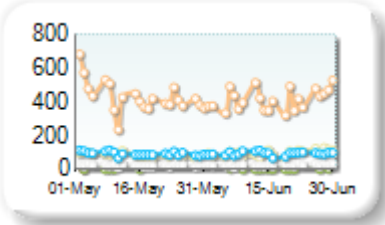
Spreads measure the bid to offer spread of the best visible orders in the book. The result is averaged over the stocks in the index and is based on measurements of the order books every 30 seconds. The value for the spread is quoted in basis points (0.01%).

Book Depths

10BPS Depth (top of book)

| Rank | Venue | Depth (1K EUR) | Change |
|------|-------|----------------|--------|
| 1 | XMAD | 411.7 | -14.5 |
| 2 | CEUX | 95.7 | +15.0 |
| 3 | AQEU | 93.6 | +5.1 |
| 4 | TQEX | 26.3 | +3.3 |
| 5 | BATE | 1.7 | +0.9 |
| 6 | CHIX | 0.0 | +0.0 |

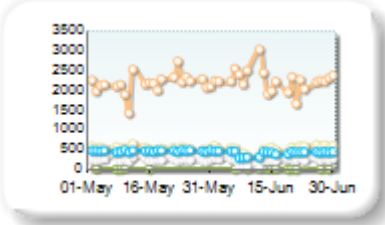
Monthly Depth Trend



50BPS Depth (deeper into book)

| Rank | Venue | Depth (1K EUR) | Change |
|------|-------|----------------|--------|
| 1 | XMAD | 2,259.1 | +81.8 |
| 2 | CEUX | 519.8 | -13.4 |
| 3 | AQEU | 413.5 | -34.3 |
| 4 | TQEX | 219.1 | -33.5 |
| 5 | BATE | 9.7 | +3.2 |
| 6 | CHIX | 5.6 | -1.4 |

Monthly Depth Trend



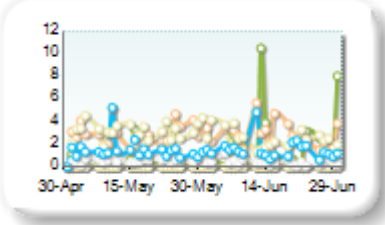
Market depth measures the amount of visible liquidity (bids and offers) in the order book within 10 or 50 BPS of mid price. The result is averaged over the stocks in the index and is based on measurements of the order book every 30 seconds. This is quoted in '000s of EUR.

Best Prices

At touch

| Rank | Venue | Best Price (%) | Change |
|------|-------|----------------|--------|
| 1 | XMAD | 2.87 | +0.52 |
| 2 | CEUX | 2.39 | -0.72 |
| 3 | BATE | 1.92 | -0.07 |
| 4 | AQEU | 1.52 | -0.01 |
| 5 | TQEX | 0.41 | -0.16 |
| 6 | CHIX | 0.01 | +0.01 |
| 7 | TRQX | 0.00 | +0.00 |
| 8 | AQXE | 0.00 | +0.00 |

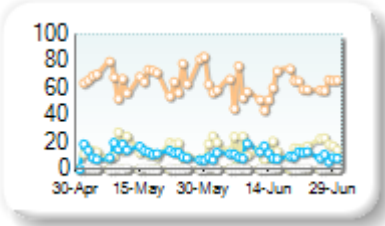
Best Prices Trend



25k EUR deal

| Rank | Venue | Best Price (%) | Change |
|------|-------|----------------|--------|
| 1 | XMAD | 60.26 | -7.15 |
| 2 | CEUX | 16.42 | +3.26 |
| 3 | AQEU | 10.59 | -1.03 |
| 4 | BATE | 0.74 | +0.72 |
| 5 | TQEX | 0.66 | +0.11 |
| 6 | CHIX | 0.00 | +0.00 |
| 7 | TRQX | 0.00 | +0.00 |
| 8 | AQXE | 0.00 | +0.00 |

Best Prices Trend

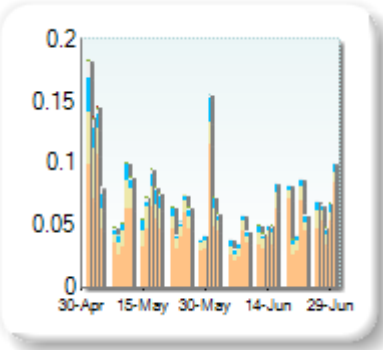


Best Price % measures how often each venue posts an absolute best price (no ties) for stocks. The result is averaged over the stocks in the index and is based on measurements of the order book every 5 seconds.

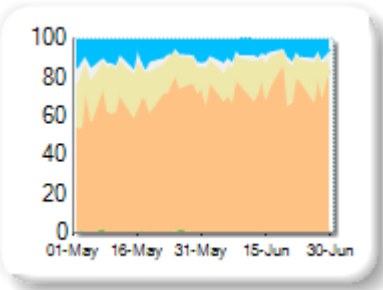
Market Share

| Rank | Venue | Market Share | Change |
|------|-------|--------------|--------|
| 1 | XMAD | 75.13% | +8.94 |
| 2 | CEUX | 14.49% | -4.22 |
| 3 | AQEU | 8.01% | -2.92 |
| 4 | TQEX | 2.31% | -1.22 |
| 5 | BATE | 0.07% | -0.40 |

Volume Trend



Market Share Trend



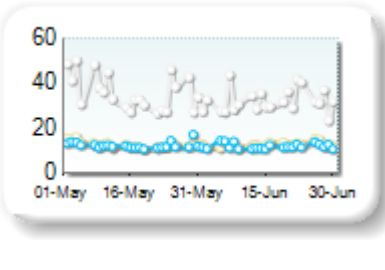
Market share is based on on-book value traded during continuous trading. The share is calculated by averaging over all stocks in the index. The current value shown is for last week and the change is relative to the previous week.

Spreads

At touch

| Rank | Venue | Spread (bps) | Change |
|------|-------|--------------|--------|
| 1 | AQEU | 12.01 | -0.35 |
| 2 | XMAD | 12.51 | -0.10 |
| 3 | CEUX | 12.67 | -0.08 |
| 4 | TQEX | 32.26 | -3.80 |

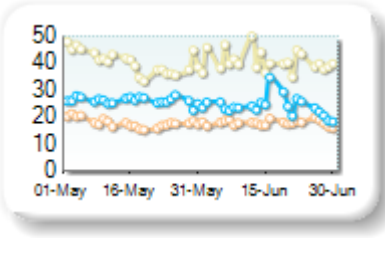
Monthly Spread Trend



25k EUR deal

| Rank | Venue | Spread (bps) | Change |
|------|-------|--------------|--------|
| 1 | XMAD | 17.92 | +0.03 |
| 2 | AQEU | 23.94 | -2.20 |
| 3 | CEUX | 40.55 | +0.24 |

Monthly Spread Trend



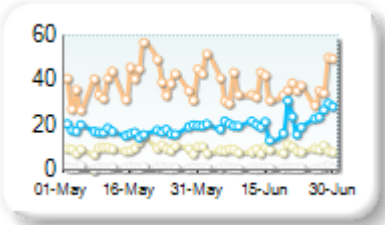
Spreads measure the bid to offer spread of the best visible orders in the book. The result is averaged over the stocks in the index and is based on measurements of the order books every 30 seconds. The value for the spread is quoted in basis points (0.01%).

Book Depths

10BPS Depth (top of book)

| Rank | Venue | Depth (1K EUR) | Change |
|------|-------|----------------|--------|
| 1 | XMAD | 37.8 | -0.9 |
| 2 | AQEU | 21.4 | +4.8 |
| 3 | CEUX | 9.1 | -0.7 |
| 4 | BATE | 4.7 | +0.1 |
| 5 | TQEX | 1.2 | -0.1 |

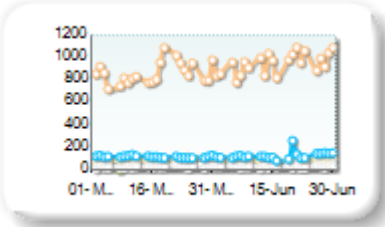
Monthly Depth Trend



50BPS Depth (deeper into book)

| Rank | Venue | Depth (1K EUR) | Change |
|------|-------|----------------|--------|
| 1 | XMAD | 944.8 | +84.9 |
| 2 | AQEU | 130.2 | +15.5 |
| 3 | CEUX | 93.3 | +0.1 |
| 4 | TQEX | 30.3 | +1.6 |
| 5 | BATE | 2.6 | -0.1 |

Monthly Depth Trend



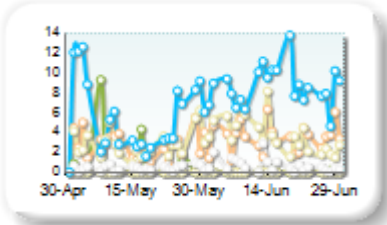
Market depth measures the amount of visible liquidity (bids and offers) in the order book within 10 or 50 BPS of mid price. The result is averaged over the stocks in the index and is based on measurements of the order book every 30 seconds. This is quoted in '000s of EUR.

Best Prices

At touch

| Rank | Venue | Best Price (%) | Change |
|------|-------|----------------|--------|
| 1 | AQEU | 8.66 | +3.19 |
| 2 | CEUX | 3.74 | +1.06 |
| 3 | XMAD | 3.48 | -0.08 |
| 4 | TQEX | 0.69 | +0.38 |
| 5 | BATE | 0.02 | -0.69 |
| 6 | CHIX | 0.00 | +0.00 |
| 7 | TRQX | 0.00 | +0.00 |
| 8 | AQXE | 0.00 | +0.00 |

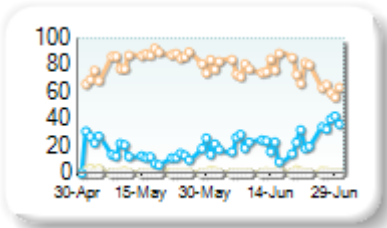
Best Prices Trend



25k EUR deal

| Rank | Venue | Best Price (%) | Change |
|------|-------|----------------|--------|
| 1 | XMAD | 74.33 | -7.94 |
| 2 | AQEU | 24.52 | +8.97 |
| 3 | CEUX | 0.67 | -0.44 |
| 4 | TQEX | 0.00 | -0.03 |
| 5 | CHIX | 0.00 | +0.00 |
| 6 | TRQX | 0.00 | +0.00 |
| 7 | BATE | 0.00 | +0.00 |
| 8 | AQXE | 0.00 | +0.00 |

Best Prices Trend



Best Price % measures how often each venue posts an absolute best price (no ties) for stocks. The result is averaged over the stocks in the index and is based on measurements of the order book every 5 seconds.