

Indices

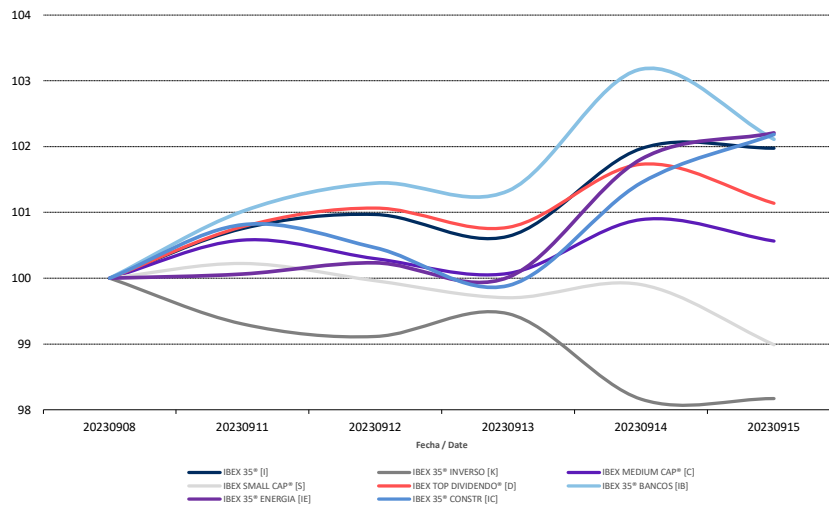
Boletín semanal Índices IBEX® / Weekly bulletin IBEX® Indexes.

11/09/2023 - 15/09/2023

	Cierre/Closing	Máximo/Max*	Mínimo/Min*	Rentabilidad/Yield	Rent. anual/ Annual Yield
IBEX 35® [I]	9.549,7	9.549,7	9.424,1	1,98%	16,05%
IBEX 35® CON DIV [J]	31.551,8	31.551,8	31.136,9	1,98%	19,82%
IBEX 35® INVERSO [K]	1.848,1	1.872,3	1.847,9	-1,83%	-14,40%
IBEX MEDIUM CAP® [C]	13.407,0	13.450,2	13.341,5	0,57%	4,75%
IBEX SMALL CAP® [S]	7.831,1	7.928,8	7.831,1	-1,01%	8,99%
IBEX TOP DIVIDENDO® [D]	2.663,8	2.679,4	2.654,2	1,14%	5,38%
IBEX 35® BANCOS [IB]	614,0	620,4	607,4	2,11%	17,29%
IBEX 35® ENERGIA [IE]	1.445,0	1.445,0	1.414,0	2,21%	1,75%
IBEX 35® CONSTR [IC]	1.763,9	1.763,9	1.724,3	2,18%	10,00%

* sobre cierres diarios

Evolución Semanal Índices / Indices Weekly Evolution



Ranking Semanal Valores IBEX 35® / IBEX35® Stocks Weekly Ranking:

Ranking subidas / Top performing stocks		
Cod./Sym.	Valor/Company	Rentabilidad/Yield
GRF	GRIFOLS	8,90%
ROVI	LABORAT.ROVI	6,60%
SLR	SOLARIA	6,22%
IDR	INDRA A	4,66%
CLNX	CELLNEX	4,31%

Ranking bajadas / Bottom performing stocks		
Cod./Sym.	Valor/Company	Rentabilidad/Yield
AENA	AENA	-2,53%
LOG	LOGISTA	-1,58%
IAG	INT.AIRL.GRP	-1,11%
CABK	CAIXABANK	-0,31%
FDR	FLUIDRA	-0,25%

Secretaría de Gestión de los Índices

Email: ibex@grupobme.es

Tel.: 91.709.53.86