

## Indices

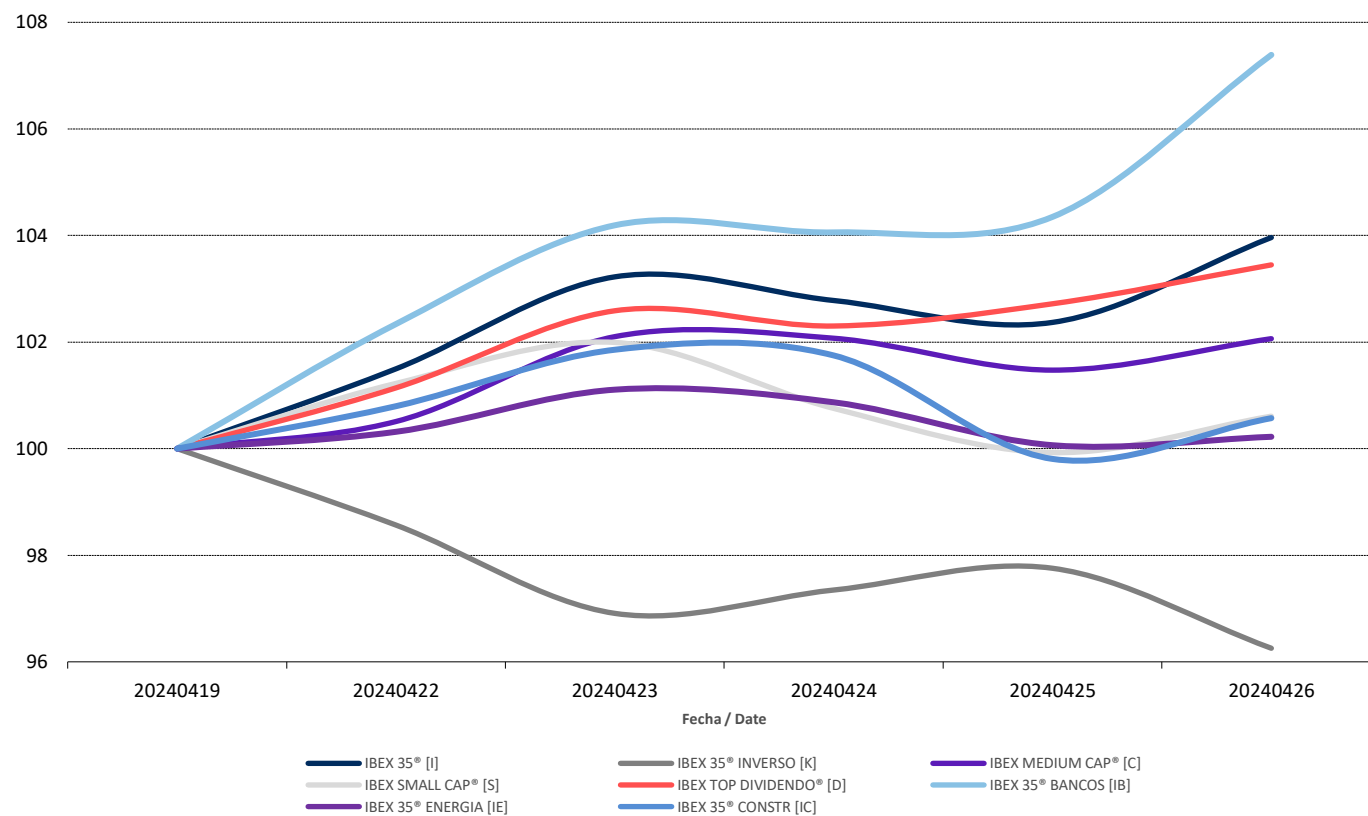
### Boletín semanal Índices IBEX® / Weekly bulletin IBEX® Indexes.

22/04/2024 - 26/04/2024

	Cierre/Closing	Máximo/Max*	Mínimo/Min*	Rentabilidad/Yield	Rent. anual/ Annual Yield
IBEX 35® [I]	11.154,6	11.154,6	10.890,2	3,96%	10,42%
IBEX 35® CON DIV [J]	37.747,0	37.747,0	36.852,2	3,96%	11,95%
IBEX 35® INVERSO [K]	1.603,8	1.642,3	1.603,8	-3,75%	-8,89%
IBEX MEDIUM CAP® [C]	13.659,9	13.665,0	13.451,9	2,06%	0,82%
IBEX SMALL CAP® [S]	8.186,8	8.299,4	8.131,1	0,61%	3,03%
IBEX TOP DIVIDENDO® [D]	3.146,8	3.146,8	3.076,6	3,45%	13,82%
IBEX 35® BANCOS [IB]	886,5	886,5	844,8	7,39%	32,55%
IBEX 35® ENERGIA [IE]	1.393,9	1.406,2	1.391,7	0,22%	-2,51%
IBEX 35® CONSTR [IC]	1.880,1	1.904,1	1.865,8	0,57%	-4,14%

\* sobre cierres diarios

Evolución Semanal Índices / Indices Weekly Evolution



#### Ranking Semanal Valores IBEX 35® / IBEX35® Stocks Weekly Ranking:

Ranking subidas / Top performing stocks		
Cod./Sym.	Valor/Company	Rentabilidad/Yield
SAB	B. SABADELL	13,91%
BBVA	BBVA	7,64%
SAN	SANTANDER	7,51%
ROVI	LABORAT.ROVI	7,05%
CABK	CAIXABANK	6,41%

Ranking bajadas / Bottom performing stocks		
Cod./Sym.	Valor/Company	Rentabilidad/Yield
RED	REDEIA CORPO	-2,32%
ELE	ENDESA	-2,10%
REP	REPSOL	-1,51%
ANE	ACCIONA ENER	-1,33%
ACS	ACS CONST.	-1,05%

Secretaría de Gestión de los Índices

Email: [ibex@grupobme.es](mailto:ibex@grupobme.es)

Tel.: 91.709.53.86