

# How to list ETFs on the Spanish Stock Exchange

BME Exchange provides an **efficient, robust and secure trading system** derived from more than 15 years of expertise in the ETF market and the technological advantages of being part of the SIX Group.

ETFs have opened up a **broad array of investment opportunities for institutional and retail investors** alike. With one simple trade, ETFs enable investors to get easy and cost competitive exposure to a wide range of asset classes. Additionally, **ETFs are not subject to the Spanish Financial Transaction Tax.**

ETFs are traded and settled just like any other shares on the stock market. Access to **liquidity is guaranteed by specialists or market makers** who take the public commitment to place constant bid and offer prices on the ETFs under their coverage.

Every trading participant with access to BME Exchange trading platform can trade in the ETF segment, without additional costs or specific technical developments.



## Documentation:

- Solicitud de admisión.
- Certificado del acuerdo de emisión y de suscripción y reembolso.
- Copia del contrato de constitución del Fondo.
- Folleto Informativo de la emisión presentado ante la CNMV o autoridad supervisora competente.
- Contrato del especialista.



## Eligibility requirements:

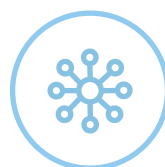
1. Securities must be **marketable** and **issued by national or foreign Collective Investment Institutions (CIIs)** that comply with the legal requirements governing CIIs.
2. **Registration of the Prospectus** at the CNMV and its subsequent verification.
3. Inclusion of the securities in **Iberclear's registry** (Spanish CSD).
4. At least **one market maker agreement**.

# BME Exchange offers



## Fast admission process.

Only two additional steps if your ETF Prospectus is registered with the CNMV.



## Diversified exposure to Spanish market.

Benefit from the liquidity of market reference IBEX35® index as an underlying.



## Advantages if your ETF is already listed at SIX Group.

We waive your listing fee, as well as the maintenance fee for the first 4 years.



## Sales and marketing support.

Co-promotion sales activities in collaboration with BME Exchange's market members.



## Financial education and knowledge.

Ad-hoc campaigns organised by Instituto BME.



## Relevant Documentation:



Madrid Stock  
Exchange Circular



Market  
model



Operating rules for the trading of  
shares in the ETF segment



## Get in touch now!

**BME ETFs**  
[etf@grupobme.es](mailto:etf@grupobme.es)